

**Product Name: PLC  $\beta$ 3 (phospho Ser1105) Rabbit Polyclonal Antibody**  
**Catalog #: APRab05282**

---

## Summary

<b>Production Name</b>	PLC $\beta$ 3 (phospho Ser1105) Rabbit Polyclonal Antibody
<b>Description</b>	Rabbit Polyclonal Antibody
<b>Host</b>	Rabbit
<b>Application</b>	ELISA,IHC,WB,
<b>Reactivity</b>	Human,Mouse,Rat

## Performance

<b>Conjugation</b>	Unconjugated
<b>Modification</b>	Phospho Antibody
<b>Isotype</b>	IgG
<b>Clonality</b>	Polyclonal
<b>Form</b>	Liquid
<b>Storage</b>	Store at 4°C short term. Aliquot and store at -20°C long term. Avoid freeze/thaw cycles.
<b>Buffer</b>	Liquid in PBS containing 50% glycerol, 0.5% BSA and 0.02% New type preservative N.
<b>Purification</b>	Affinity purification

## Immunogen

<b>Gene Name</b>	PLCB3
<b>Alternative Names</b>	PLCB3; 1-phosphatidylinositol 4; 5-bisphosphate phosphodiesterase beta-3; Phosphoinositide phospholipase C-beta-3; Phospholipase C-beta-3; PLC-beta-3
<b>Gene ID</b>	5331.0
<b>SwissProt ID</b>	Q01970.The antiserum was produced against synthesized peptide derived from human PLCB3 around the phosphorylation site of Ser1105. AA range:1071-1120

## Application

<b>Dilution Ratio</b>	WB 1:500 - 1:2000. IHC 1:100 - 1:300. ELISA: 1:10000..
<b>Molecular Weight</b>	160kD

**Product Name: PLC β3 (phospho Ser1105) Rabbit Polyclonal Antibody**  
**Catalog #: AP Rab05282**



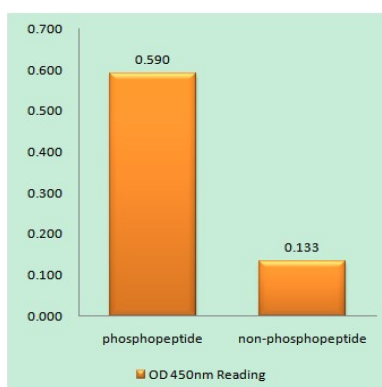
## Background

This gene encodes a member of the phosphoinositide phospholipase C beta enzyme family that catalyze the production of the secondary messengers diacylglycerol and inositol 1,4,5-trisphosphate from phosphatidylinositol in G-protein-linked receptor-mediated signal transduction. Alternative splicing results in multiple transcript variants.[provided by RefSeq, May 2010],catalytic activity:1-phosphatidyl-1D-myo-inositol 4,5-bisphosphate + H(2)O = 1D-myo-inositol 1,4,5-trisphosphate + diacylglycerol.,cofactor:Calcium.,function:The production of the second messenger molecules diacylglycerol (DAG) and inositol 1,4,5-trisphosphate (IP3) is mediated by activated phosphatidylinositol-specific phospholipase C enzymes.,similarity:Contains 1 C2 domain.,similarity:Contains 1 PI-PLC X-box domain.,similarity:Contains 1 PI-PLC Y-box domain.,subunit:Interacts with SHANK2 (By similarity). Interacts with LPAR2.,

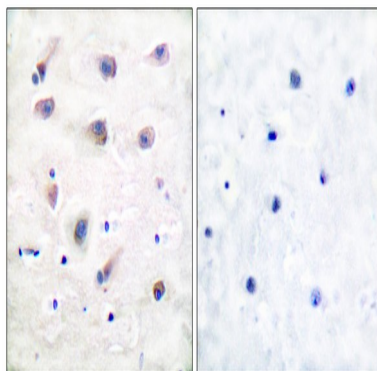
## Research Area

Stem cell pathway; WNT;WNT-T CELL;β-Catenin; AMPK

## Image Data



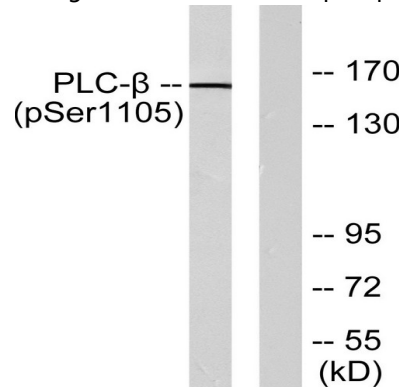
Enzyme-Linked Immunosorbent Assay (Phospho-ELISA) for Immunogen Phosphopeptide (Phospho-left) and Non-Phosphopeptide (Phospho-right) , using PLCB3 (Phospho-Ser1105) Antibody



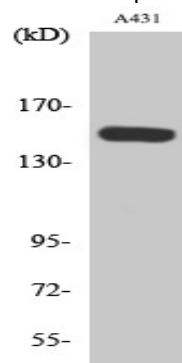
Immunohistochemistry analysis of paraffin-embedded human brain, using PLCB3 (Phospho-Ser1105) Antibody. The

**Product Name: PLC  $\beta$  3 (phospho Ser1105) Rabbit Polyclonal Antibody**  
**Catalog #: APRab05282**

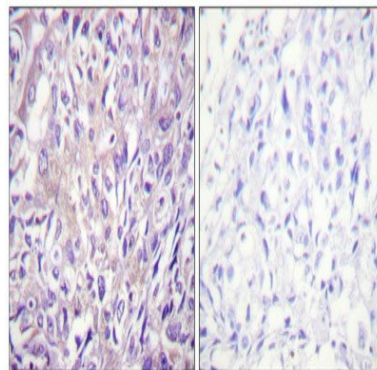
picture on the right is blocked with the phospho peptide.



Western blot analysis of lysates from A431 cells, using PLCB3 (Phospho-Ser1105) Antibody. The lane on the right is blocked with the phospho peptide.



Western Blot analysis of various cells using Phospho-PLC  $\beta$  3 (S1105) Polyclonal Antibody diluted at 1: 1000



Immunohistochemical analysis of paraffin-embedded Human breast cancer. Antibody was diluted at 1:100 (4°, overnight) . High-pressure and temperature Tris-EDTA, pH 8.0 was used for antigen retrieval. Negative control (right) obtained from antibody was pre-absorbed by immunogen peptide.

## Note

For research use only.

**Product Name: PLC  $\beta$ 3 (phospho Ser1105) Rabbit  
Polyclonal Antibody  
Catalog #: APRab05282**

---

