

Product Name: PLB (phospho Ser16/T17) Rabbit Polyclonal Antibody
Catalog #: APRab05281

Summary

Production Name	PLB (phospho Ser16/T17) Rabbit Polyclonal Antibody
Description	Rabbit Polyclonal Antibody
Host	Rabbit
Application	IF,ELISA
Reactivity	Human,Mouse,Rat

Performance

Conjugation	Unconjugated
Modification	Phospho Antibody
Isotype	IgG
Clonality	Polyclonal
Form	Liquid
Storage	Store at 4°C short term. Aliquot and store at -20°C long term. Avoid freeze/thaw cycles.
Buffer	Liquid in PBS containing 50% glycerol, 0.5% BSA and 0.02% New type preservative N.
Purification	Affinity purification

Immunogen

Gene Name	PLN
Alternative Names	PLN; PLB; Cardiac phospholamban; PLB
Gene ID	5350.0
SwissProt ID	P26678.The antiserum was produced against synthesized peptide derived from human PLB around the phosphorylation site of Ser16 and Thr17. AA range:1-50

Application

Dilution Ratio	IF 1:200 - 1:1000. ELISA: 1:5000.
Molecular Weight	

Product Name: PLB (phospho Ser16/T17) Rabbit Polyclonal Antibody
Catalog #: APRab05281

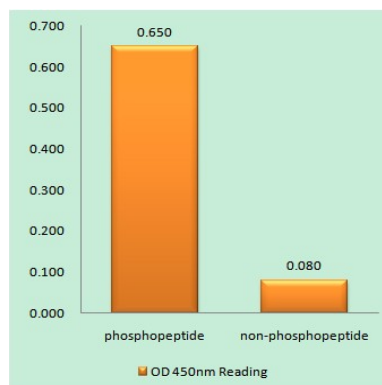
Background

The protein encoded by this gene is found as a pentamer and is a major substrate for the cAMP-dependent protein kinase in cardiac muscle. The encoded protein is an inhibitor of cardiac muscle sarcoplasmic reticulum Ca^{2+} -ATPase in the unphosphorylated state, but inhibition is relieved upon phosphorylation of the protein. The subsequent activation of the Ca^{2+} pump leads to enhanced muscle relaxation rates, thereby contributing to the inotropic response elicited in heart by beta-agonists. The encoded protein is a key regulator of cardiac diastolic function. Mutations in this gene are a cause of inherited human dilated cardiomyopathy with refractory congestive heart failure, and also familial hypertrophic cardiomyopathy. [provided by RefSeq, Apr 2016],disease:Defects in PLN are the cause of cardiomyopathy dilated type 1P (CMD1P) [MIM:609909]. Dilated cardiomyopathy is a disorder characterized by ventricular dilation and impaired systolic function, resulting in congestive heart failure and arrhythmia. Patients are at risk of premature death.,function:Phospholamban has been postulated to regulate the activity of the calcium pump of cardiac sarcoplasmic reticulum.,PTM:Phosphorylated in response to beta-adrenergic stimulation.,similarity:Belongs to the phospholamban family.,subunit:Homopentamer.,tissue specificity:Heart.,

Research Area

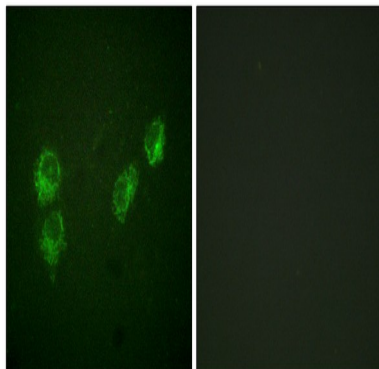
Calcium;Dilated cardiomyopathy;

Image Data



Enzyme-Linked Immunosorbent Assay (Phospho-ELISA) for Immunogen Phosphopeptide (Phospho-left) and Non-Phosphopeptide (Phospho-right) , using PLB (Phospho-Ser16+Thr17) Antibody

**Product Name: PLB (phospho Ser16/T17) Rabbit
Polyclonal Antibody
Catalog #: APRab05281**



Immunofluorescence analysis of HUVEC cells, using PLB (Phospho-Ser16+Thr17) Antibody. The picture on the right is blocked with the phospho peptide.

Note

For research use only.