

**Product Name: PDE4B/C/D (phospho Ser133/119/190)**  
**Rabbit Polyclonal Antibody**  
**Catalog #: APRab05224**



## Summary

<b>Production Name</b>	PDE4B/C/D (phospho Ser133/119/190) Rabbit Polyclonal Antibody
<b>Description</b>	Rabbit Polyclonal Antibody
<b>Host</b>	Rabbit
<b>Application</b>	ELISA,IHC,WB
<b>Reactivity</b>	Human,Mouse,Rat

## Performance

<b>Conjugation</b>	Unconjugated
<b>Modification</b>	Phospho Antibody
<b>Isotype</b>	IgG
<b>Clonality</b>	Polyclonal
<b>Form</b>	Liquid
<b>Storage</b>	Store at 4°C short term. Aliquot and store at -20°C long term. Avoid freeze/thaw cycles.
<b>Buffer</b>	Liquid in PBS containing 50% glycerol, 0.5% BSA and 0.02% New type preservative N.
<b>Purification</b>	Affinity purification

## Immunogen

<b>Gene Name</b>	PDE4B/PDE4C/PDE4D
<b>Alternative Names</b>	PDE4B; DPDE4; cAMP-specific 3'; 5'-cyclic phosphodiesterase 4B; DPDE4; PDE32; PDE4C; DPDE1; cAMP-specific 3',5'-cyclic phosphodiesterase 4C; DPDE1; PDE21; PDE4D; DPDE3; cAMP-specific 3',5'-cyclic phosphodiesterase 4D; DPDE3; PDE43
<b>Gene ID</b>	5144.0
<b>SwissProt ID</b>	Q07343/Q08493/Q08499.The antiserum was produced against synthesized peptide derived from human PDE4D around the phosphorylation site of Ser190/53. AA range:156-205

## Application

<b>Dilution Ratio</b>	WB 1:500 - 1:2000. IHC 1:100 - 1:300. ELISA: 1:20000..
-----------------------	--

**Product Name: PDE4B/C/D (phospho Ser133/119/190)**  
**Rabbit Polyclonal Antibody**  
**Catalog #: AP Rab05224**



**Molecular Weight** 76kD

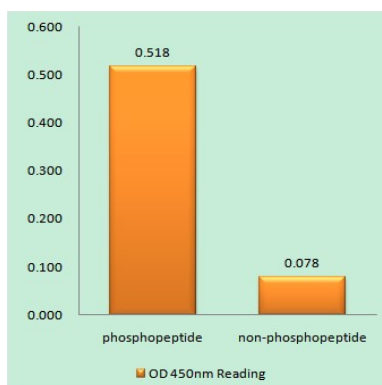
## Background

This gene is a member of the type IV, cyclic AMP (cAMP)-specific, cyclic nucleotide phosphodiesterase (PDE) family. The encoded protein regulates the cellular concentrations of cyclic nucleotides and thereby play a role in signal transduction. Altered activity of this protein has been associated with schizophrenia and bipolar affective disorder. Alternative splicing and the use of alternative promoters results in multiple transcript variants encoding different isoforms. [provided by RefSeq, Jul 2014], alternative products: Additional isoforms seem to exist, catalytic activity: Adenosine 3',5'-cyclic phosphate + H<sub>2</sub>O = adenosine 5'-phosphate, enzyme regulation: Inhibited by rolipram, function: May be involved in mediating central nervous system effects of therapeutic agents ranging from antidepressants to antiasthmatic and anti-inflammatory agents, pathway: Purine metabolism; cAMP degradation; AMP from cAMP: step 1/1, similarity: Belongs to the cyclic nucleotide phosphodiesterase family, tissue specificity: Expressed in brain, heart, lung and skeletal muscle.

## Research Area

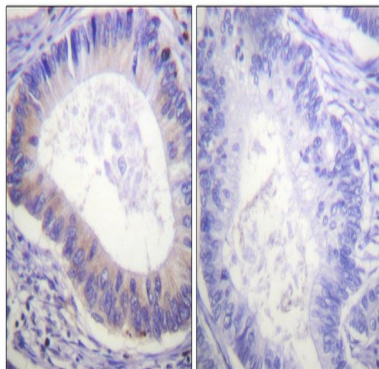
Purine metabolism;

## Image Data

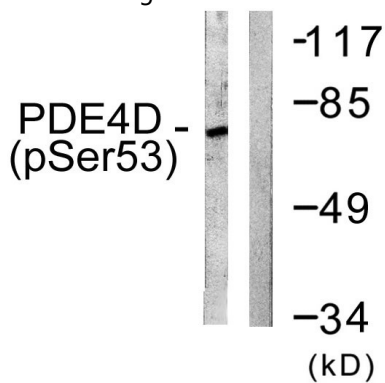


Enzyme-Linked Immunosorbent Assay (Phospho-ELISA) for Immunogen Phosphopeptide (Phospho-left) and Non-Phosphopeptide (Phospho-right), using PDE4D (Phospho-Ser190/53) Antibody

**Product Name: PDE4B/C/D (phospho Ser133/119/190)**  
**Rabbit Polyclonal Antibody**  
**Catalog #: APRab05224**



Immunohistochemistry analysis of paraffin-embedded human colon carcinoma, using PDE4D (Phospho-Ser190/53) Antibody. The picture on the right is blocked with the phospho peptide.



Western blot analysis of lysates from K562 cells treated with H<sub>2</sub>O<sub>2</sub> 100uM 30', using PDE4D (Phospho-Ser190/53) Antibody. The lane on the right is blocked with the phospho peptide.

## Note

For research use only.