

**Product Name: p120 (phospho Tyr228) Rabbit Polyclonal Antibody**  
**Catalog #: APRab05140**

---

## Summary

<b>Production Name</b>	p120 (phospho Tyr228) Rabbit Polyclonal Antibody
<b>Description</b>	Rabbit Polyclonal Antibody
<b>Host</b>	Rabbit
<b>Application</b>	WB,IHC,IF,ELISA
<b>Reactivity</b>	Human,Mouse,Rat

## Performance

<b>Conjugation</b>	Unconjugated
<b>Modification</b>	Phospho Antibody
<b>Isotype</b>	IgG
<b>Clonality</b>	Polyclonal
<b>Form</b>	Liquid
<b>Storage</b>	Store at 4°C short term. Aliquot and store at -20°C long term. Avoid freeze/thaw cycles.
<b>Buffer</b>	Liquid in PBS containing 50% glycerol, 0.5% BSA and 0.02% New type preservative N.
<b>Purification</b>	Affinity purification

## Immunogen

<b>Gene Name</b>	CTNND1
<b>Alternative Names</b>	CTNND1; KIAA0384; Catenin delta-1; Cadherin-associated Src substrate; CAS; p120 catenin; p120(ctn); p120(cas)
<b>Gene ID</b>	1500.0
<b>SwissProt ID</b>	O60716.The antiserum was produced against synthesized peptide derived from human Catenin-delta1 around the phosphorylation site of Tyr228. AA range:201-250

## Application

<b>Dilution Ratio</b>	WB 1:500 - 1:2000. IHC 1:100 - 1:300. IF 1:200 - 1:1000. ELISA: 1:10000. Not yet tested in other applications.
-----------------------	--

**Product Name: p120 (phospho Tyr228) Rabbit Polyclonal Antibody**  
**Catalog #: APRab05140**

**Molecular Weight** 108kD

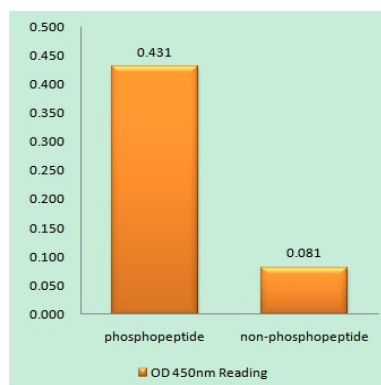
## Background

catenin delta 1 (CTNND1) Homo sapiens This gene encodes a member of the Armadillo protein family, which function in adhesion between cells and signal transduction. Multiple translation initiation codons and alternative splicing result in many different isoforms being translated. Not all of the full-length natures of the described transcript variants have been determined. Read-through transcription also exists between this gene and the neighboring upstream thioredoxin-related transmembrane protein 2 (TMX2) gene. [provided by RefSeq, Dec 2010],alternative products:Experimental confirmation may be lacking for some isoforms,disease:May contribute to cell malignancy. Complete loss of expression was observed in approximately 10% of invasive ductal breast carcinomas investigated.,domain:A possible nuclear localization signal exists in all isoforms where Asp-626--631-Arg are deleted.,function:Binds to and inhibits the transcriptional repressor ZBTB33, which may lead to activation of target genes of the Wnt signaling pathway (By similarity). May associate with and regulate the cell adhesion properties of both C- and E-cadherins. Implicated both in cell transformation by SRC and in ligand-induced receptor signaling through the EGF, PDGF, CSF-1 and ERBB2 receptors. Promotes GLIS2 C-terminal cleavage.,induction:Induced in vascular endothelium by wounding. This effect is potentiated by prior laminar shear stress, which enhances wound closure.,PTM:Phosphorylated.,similarity:Belongs to the beta-catenin family.,similarity:Contains 10 ARM repeats.,subcellular location:Interaction with GLIS2 promotes nuclear translocation.,subunit:Belongs to a multiprotein cell-cell adhesion complex that also contains E-cadherin, alpha-catenin, beta-catenin, and gamma-catenin. Binds to the C-terminal fragment of PSEN1 and mutually competes for E-cadherin. Interacts with ZBTB33. Interacts with GLIS2.,tissue specificity:Expressed in vascular endothelium.,

## Research Area

Adherens\_Junction;Leukocyte transendothelial migration;

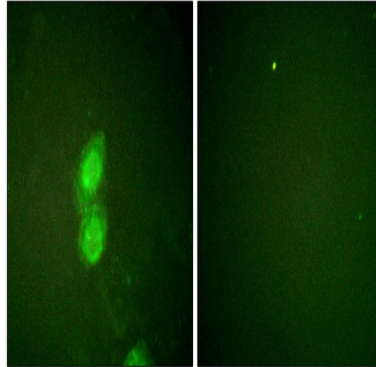
## Image Data



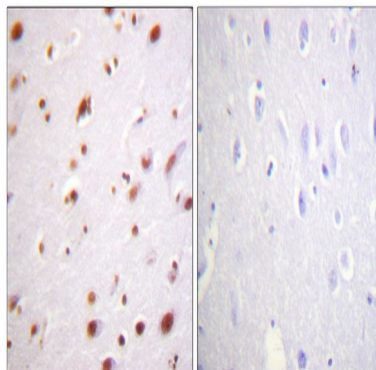
Enzyme-Linked Immunosorbent Assay (Phospho-ELISA) for Immunogen Phosphopeptide (Phospho-left) and Non-

**Product Name: p120 (phospho Tyr228) Rabbit Polyclonal Antibody**  
**Catalog #: APRab05140**

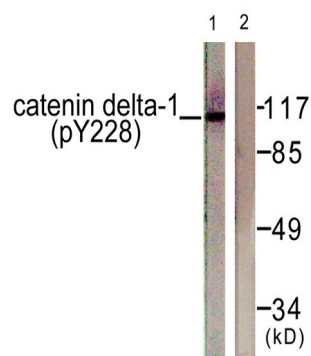
Phosphopeptide (Phospho-right) , using Catenin-delta1 (Phospho-Tyr228) Antibody



Immunofluorescence analysis of HUVEC cells, using Catenin-delta1 (Phospho-Tyr228) Antibody. The picture on the right is blocked with the phospho peptide.



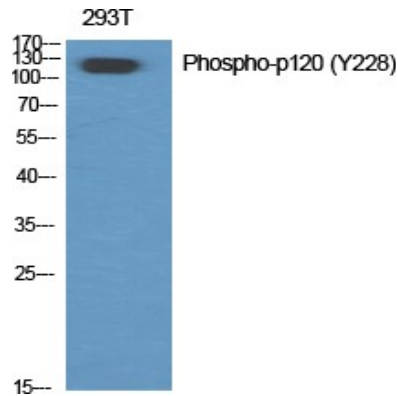
Immunohistochemistry analysis of paraffin-embedded human brain, using Catenin-delta1 (Phospho-Tyr228) Antibody. The picture on the right is blocked with the phospho peptide.



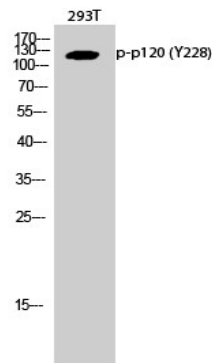
Western blot analysis of lysates from HUVEC cells, using Catenin-delta1 (Phospho-Tyr228) Antibody. The lane on the right is blocked with the phospho peptide.

**Product Name: p120 (phospho Tyr228) Rabbit  
Polyclonal Antibody  
Catalog #: APRab05140**

---



Western Blot analysis of various cells using Phospho-p120 (Y228) Polyclonal Antibody diluted at 1: 500



Western Blot analysis of 293T cells using Phospho-p120 (Y228) Polyclonal Antibody diluted at 1: 500

## Note

For research use only.