

**Product Name: MARCKS (phospho Ser158) Rabbit Polyclonal Antibody**  
**Catalog #: APRab04973**

---

## Summary

<b>Production Name</b>	MARCKS (phospho Ser158) Rabbit Polyclonal Antibody
<b>Description</b>	Rabbit Polyclonal Antibody
<b>Host</b>	Rabbit
<b>Application</b>	WB,ELISA
<b>Reactivity</b>	Human,Mouse,Rat

## Performance

<b>Conjugation</b>	Unconjugated
<b>Modification</b>	Phospho Antibody
<b>Isotype</b>	IgG
<b>Clonality</b>	Polyclonal
<b>Form</b>	Liquid
<b>Storage</b>	Store at 4°C short term. Aliquot and store at -20°C long term. Avoid freeze/thaw cycles.
<b>Buffer</b>	Liquid in PBS containing 50% glycerol, 0.5% BSA and 0.02% New type preservative N.
<b>Purification</b>	Affinity purification

## Immunogen

<b>Gene Name</b>	MARCKS
<b>Alternative Names</b>	MARCKS; MACS; PRKCSL; Myristoylated alanine-rich C-kinase substrate; MARCKS; Protein kinase C substrate; 80 kDa protein, light chain; 80K-L protein; PKCSL
<b>Gene ID</b>	4082.0
<b>SwissProt ID</b>	P29966.The antiserum was produced against synthesized peptide derived from human MARCKS around the phosphorylation site of Ser158. AA range:126-175

## Application

<b>Dilution Ratio</b>	WB 1:500 - 1:2000. ELISA: 1:20000
<b>Molecular Weight</b>	35kD

**Product Name: MARCKS (phospho Ser158) Rabbit Polyclonal Antibody**  
**Catalog #: AP Rab04973**



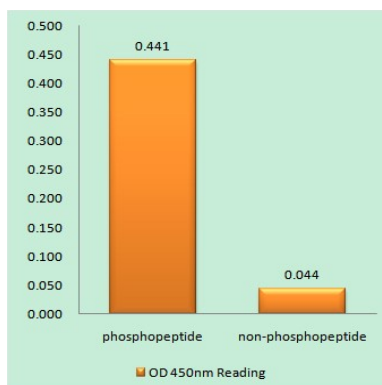
## Background

The protein encoded by this gene is a substrate for protein kinase C. It is localized to the plasma membrane and is an actin filament crosslinking protein. Phosphorylation by protein kinase C or binding to calcium-calmodulin inhibits its association with actin and with the plasma membrane, leading to its presence in the cytoplasm. The protein is thought to be involved in cell motility, phagocytosis, membrane trafficking and mitogenesis. [provided by RefSeq, Jul 2008],function:MARCKS is the most prominent cellular substrate for protein kinase C. This protein binds calmodulin, actin, and synapsin. MARCKS is a filamentous (F) actin cross-linking protein.,PTM:Phosphorylation by PKC displaces MARCKS from the membrane. It also inhibits the F-actin cross-linking activity.,similarity:Belongs to the MARCKS family.,

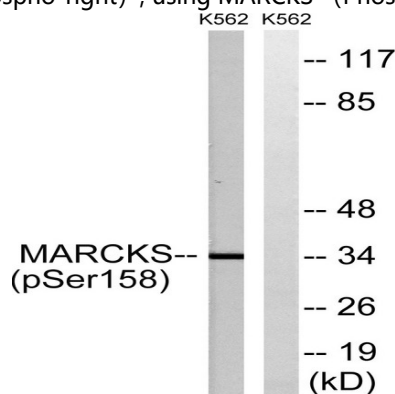
## Research Area

Fc gamma R-mediated phagocytosis;

## Image Data



Enzyme-Linked Immunosorbent Assay (Phospho-ELISA) for Immunogen Phosphopeptide (Phospho-left) and Non-Phosphopeptide (Phospho-right), using MARCKS (Phospho-Ser158) Antibody



Western blot analysis of lysates from K562 cells treated with EGF 200ng/ml 30', using MARCKS (Phospho-Ser158) Antibody. The lane on the right is blocked with the phospho peptide.

**Product Name: MARCKS (phospho Ser158) Rabbit  
Polyclonal Antibody  
Catalog #: APRab04973**

---



**Note**

For research use only.