

Product Name: Lfc (phospho Ser885) Rabbit Polyclonal Antibody
Catalog #: APRab04952



Summary

Production Name	Lfc (phospho Ser885) Rabbit Polyclonal Antibody
Description	Rabbit Polyclonal Antibody
Host	Rabbit
Application	ELISA, WB, IHC
Reactivity	Human, Mouse, Rat

Performance

Conjugation	Unconjugated
Modification	Phospho Antibody
Isotype	IgG
Clonality	Polyclonal
Form	Liquid
Storage	Store at 4°C short term. Aliquot and store at -20°C long term. Avoid freeze/thaw cycles.
Buffer	Liquid in PBS containing 50% glycerol, 0.5% BSA and 0.02% New type preservative N.
Purification	Affinity purification

Immunogen

Gene Name	ARHGEF2 ARHGEF2; KIAA0651; LFP40; Rho guanine nucleotide exchange factor 2; Guanine nucleotide exchange factor H1; GEF-H1; Microtubule-regulated Rho-GEF; Proliferating cell nucleolar antigen p40
Alternative Names	
Gene ID	9181.0 Q92974. The antiserum was produced against synthesized peptide derived from human Rho/Rac Guanine Nucleotide Exchange Factor 2 around the phosphorylation site of Ser885. AA range: 851-900
SwissProt ID	

Application

Dilution Ratio	WB 1:500 - 1:2000. IHC 1:100 - 1:300. ELISA: 1:5000..
-----------------------	---

Product Name: Lfc (phospho Ser885) Rabbit Polyclonal Antibody
Catalog #: APRab04952



Molecular Weight 111kD

Background

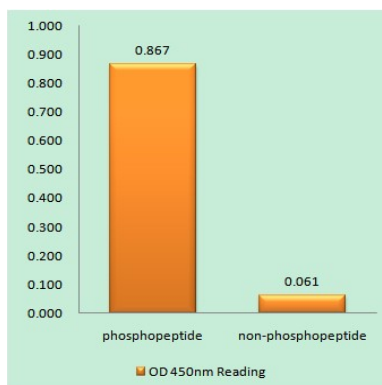
Rho GTPases play a fundamental role in numerous cellular processes that are initiated by extracellular stimuli that work through G protein coupled receptors. The encoded protein may form complex with G proteins and stimulate rho-dependent signals. Alternatively spliced transcript variants encoding different isoforms have been identified.[provided by RefSeq, Jun 2009],domain:The DH (DBL-homology) domain interacts with and promotes loading of GTP on RhoA.,domain:The PH (pleckstrin-homology) domain is involved in microtubule binding and targeting to tight junctions.,function:Activates Rho-GTPases by promoting the exchange of GDP for GTP. May be involved in epithelial barrier permeability, cell motility and polarization, dendritic spine morphology, antigen presentation, leukemic cell differentiation, cell cycle regulation, and cancer. Binds Rac-GTPases, but does not seem to promote nucleotide exchange activity toward Rac-GTPases, which was uniquely reported in PubMed:9857026. May stimulate instead the cortical activity of Rac. Inactive toward CDC42, TC10, or Ras-GTPases.,online information:ARHGEF2 entry,PTM:Phosphorylation of Ser-886 by PAK1 induces binding to protein 14-3-3 zeta, promoting its relocation to microtubules and the inhibition of its activity. Phosphorylated by STK6 and CDK1 during mitosis, which negatively regulates its activity. Phosphorylation by MAPK1 or MAPK3 increases nucleotide exchange activity. Phosphorylation by PAK4 releases GEF-H1 from the microtubules.,sequence caution:Sequence differs at a large extent from the sequence shown in the paper.,similarity:Contains 1 DH (DBL-homology) domain.,similarity:Contains 1 PH domain.,similarity:Contains 1 phorbol-ester/DAG-type zinc finger.,subcellular location:Localizes to the tips of cortical microtubules of the mitotic spindle during cell division, and is further released upon microtubule depolymerization.,subunit:Interacts with 14-3-3 zeta; when phosphorylated at Ser-886. Interacts with the kinases PAK4, AURKA/STK6 and MAPK1. Interacts with RHOA and RAC1.,

Research Area

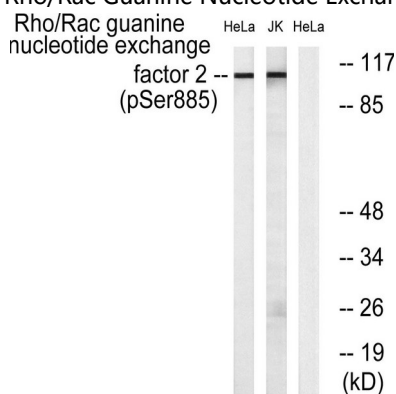
Regulation of Actin Dynamics; AMPK

Image Data

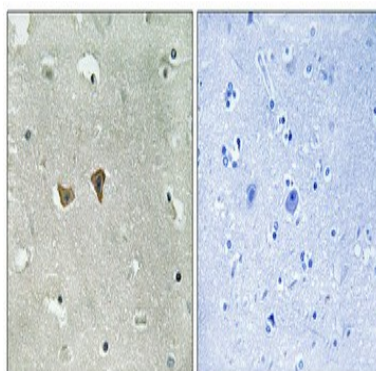
Product Name: Lfc (phospho Ser885) Rabbit Polyclonal Antibody
Catalog #: APRab04952



Enzyme-Linked Immunosorbent Assay (Phospho-ELISA) for Immunogen Phosphopeptide (Phospho-left) and Non-Phosphopeptide (Phospho-right) , using Rho/Rac Guanine Nucleotide Exchange Factor 2 (Phospho-Ser885) Antibody



Western blot analysis of lysates from HeLa cells treated with TSA 400nM 24H and Jurkat cells treated with forskolin 40nM 30', using Rho/Rac Guanine Nucleotide Exchange Factor 2 (Phospho-Ser885) Antibody. The lane on the right is blocked with the phospho peptide.



Immunohistochemical analysis of paraffin-embedded Human brain. Antibody was diluted at 1:100 (4°,overnight) . High-pressure and temperature Tris-EDTA,pH8.0 was used for antigen retrieval. Negative contrl (right) obtaned from antibody was pre-absorbed by immunogen peptide.

**Product Name: Lfc (phospho Ser885) Rabbit Polyclonal
Antibody
Catalog #: APRab04952**



Note

For research use only.