

**Product Name: Jun B (phospho Ser259) Rabbit Polyclonal Antibody**  
**Catalog #: APRab04911**

---

## Summary

<b>Production Name</b>	Jun B (phospho Ser259) Rabbit Polyclonal Antibody
<b>Description</b>	Rabbit Polyclonal Antibody
<b>Host</b>	Rabbit
<b>Application</b>	IHC,WB,ELISA
<b>Reactivity</b>	Human,Mouse,Rat

## Performance

<b>Conjugation</b>	Unconjugated
<b>Modification</b>	Phospho Antibody
<b>Isotype</b>	IgG
<b>Clonality</b>	Polyclonal
<b>Form</b>	Liquid
<b>Storage</b>	Store at 4°C short term. Aliquot and store at -20°C long term. Avoid freeze/thaw cycles.
<b>Buffer</b>	Liquid in PBS containing 50% glycerol, 0.5% BSA and 0.02% New type preservative N.
<b>Purification</b>	Affinity purification

## Immunogen

<b>Gene Name</b>	JUNB
<b>Alternative Names</b>	JUNB; Transcription factor jun-B
<b>Gene ID</b>	3726.0
<b>SwissProt ID</b>	P17275.The antiserum was produced against synthesized peptide derived from human JunB around the phosphorylation site of Ser259. AA range:226-275

## Application

<b>Dilution Ratio</b>	WB 1:500 - 1:2000. IHC 1:100 - 1:300. ELISA: 1:20000..
<b>Molecular Weight</b>	33kD

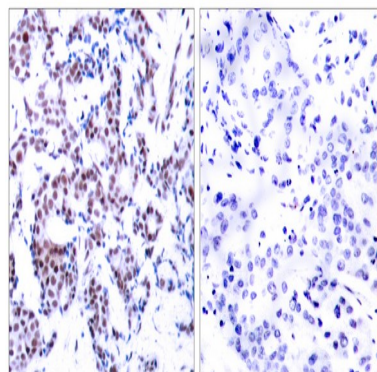
**Product Name: Jun B (phospho Ser259) Rabbit Polyclonal Antibody**  
**Catalog #: APRab04911**

## Background

function: Transcription factor involved in regulating gene activity following the primary growth factor response. Binds to the DNA sequence 5'-TGA[CG]TCA-3', induction: By growth factors, similarity: Belongs to the bZIP family, similarity: Belongs to the bZIP family. Jun subfamily, similarity: Contains 1 bZIP domain, subunit: Binds DNA as an homodimer or as an heterodimer with another member of the jun/fos family, function: Transcription factor involved in regulating gene activity following the primary growth factor response. Binds to the DNA sequence 5'-TGA[CG]TCA-3', induction: By growth factors, similarity: Belongs to the bZIP family, similarity: Belongs to the bZIP family. Jun subfamily, similarity: Contains 1 bZIP domain, subunit: Binds DNA as an homodimer or as an heterodimer with another member of the jun/fos family,

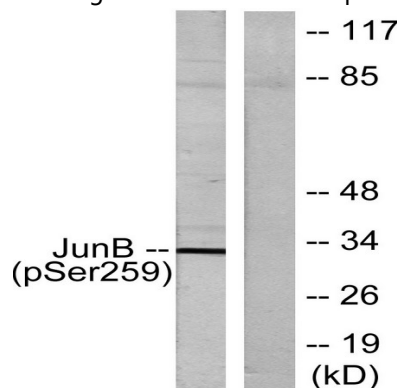
## Research Area

## Image Data



Immunohistochemistry analysis of paraffin-embedded human breast carcinoma, using JunB (Phospho-Ser259) Antibody.

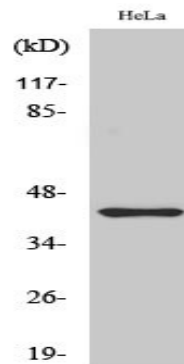
The picture on the right is blocked with the phospho peptide.



Western blot analysis of lysates from HeLa cells, using JunB (Phospho-Ser259) Antibody. The lane on the right is blocked with the phospho peptide.

**Product Name: Jun B (phospho Ser259) Rabbit  
Polyclonal Antibody  
Catalog #: APRab04911**

---



Western Blot analysis of various cells using Phospho-Jun B (S259) Polyclonal Antibody cells nucleus extracted by Minute  
TM Cytoplasmic and Nuclear Fractionation kit (SC-003, Inventbiotech, MN, USA) .

### **Note**

For research use only.