

Product Name: IκB-ε (phospho Ser22) Rabbit Polyclonal Antibody
Catalog #: APRab04895

Summary

Production Name	IκB-ε (phospho Ser22) Rabbit Polyclonal Antibody
Description	Rabbit Polyclonal Antibody
Host	Rabbit
Application	ELISA,IF,IHC,WB
Reactivity	Human,Mouse,Rat

Performance

Conjugation	Unconjugated
Modification	Phospho Antibody
Isotype	IgG
Clonality	Polyclonal
Form	Liquid
Storage	Store at 4°C short term. Aliquot and store at -20°C long term. Avoid freeze/thaw cycles.
Buffer	Liquid in PBS containing 50% glycerol, 0.5% BSA and 0.02% New type preservative N.
Purification	Affinity purification

Immunogen

Gene Name	NFKBIE
Alternative Names	NFKBIE; IKBE; NF-kappa-B inhibitor epsilon; NF-kappa-BIE; I-kappa-B-epsilon; IκB-E; IκB-epsilon; IkappaBepsilon
Gene ID	4794.0
SwissProt ID	O00221.The antiserum was produced against synthesized peptide derived from human IkappaB-epsilon around the phosphorylation site of Ser22. AA range:131-180

Application

Dilution Ratio	WB 1:500 - 1:2000. IHC 1:100 - 1:300. IF 1:200 - 1:1000. ELISA: 1:40000. Not yet tested in other applications.
-----------------------	--

Product Name: I κ B- ϵ (phospho Ser22) Rabbit Polyclonal Antibody
Catalog #: AP Rab04895

Molecular Weight 38kD

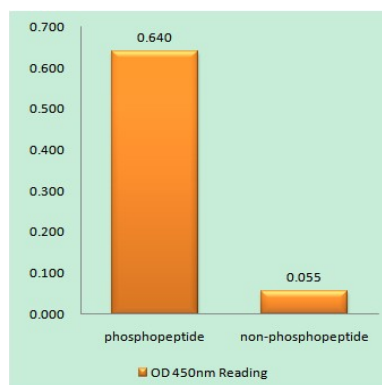
Background

The protein encoded by this gene binds to components of NF-kappa-B, trapping the complex in the cytoplasm and preventing it from activating genes in the nucleus. Phosphorylation of the encoded protein targets it for destruction by the ubiquitin pathway, which activates NF-kappa-B by making it available to translocate to the nucleus. [provided by RefSeq, Sep 2011],function:Inhibits NF-kappa-B by complexing with and trapping it in the cytoplasm. Inhibits DNA-binding of NF-kappa-B p50-p65 and p50-c-Rel complexes.,PTM:Serine phosphorylated; followed by proteasome-dependent degradation.,similarity:Belongs to the NF-kappa-B inhibitor family.,similarity:Contains 6 ANK repeats.,subunit:Interacts with RELA, REL, NFKB1 nuclear factor NF-kappa-B p50 subunit and NFKB2 nuclear factor NF-kappa-B p52 subunit.,tissue specificity:Highly expressed in spleen, testis and lung, followed by kidney, pancreas, heart, placenta and brain. Also expressed in granulocytes and macrophages.,

Research Area

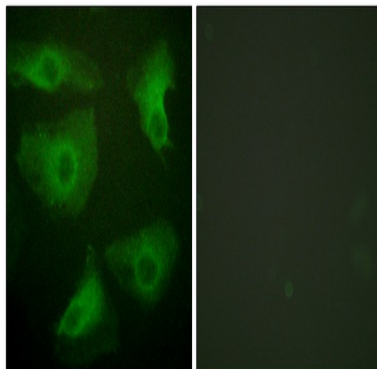
T_Cell_Receptor;B_Cell_Antigen;Neurotrophin;Adipocytokine;

Image Data

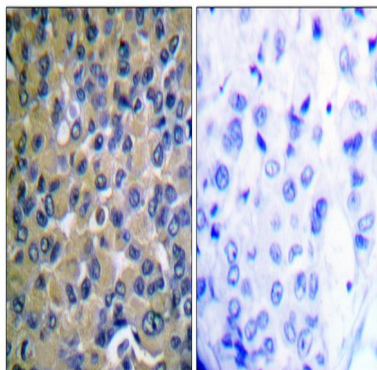


Enzyme-Linked Immunosorbent Assay (Phospho-ELISA) for Immunogen Phosphopeptide (Phospho-left) and Non-Phosphopeptide (Phospho-right) , using I κ B- ϵ (Phospho-Ser22) Antibody

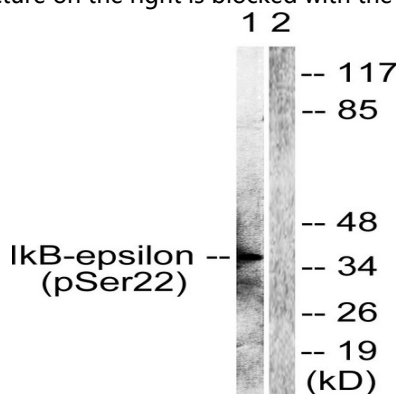
Product Name: IκB-ε (phospho Ser22) Rabbit Polyclonal Antibody
Catalog #: APRab04895



Immunofluorescence analysis of HeLa cells, using IκappaB-epsilon (Phospho-Ser22) Antibody. The picture on the right is blocked with the phospho peptide.

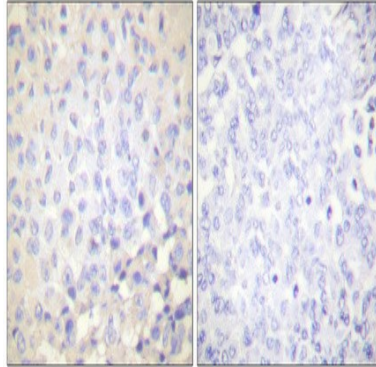


Immunohistochemistry analysis of paraffin-embedded human breast carcinoma, using IκappaB-epsilon (Phospho-Ser22) Antibody. The picture on the right is blocked with the phospho peptide.



Western blot analysis of lysates from Jurkat cells treated with TNF-α 20ng/ml 30 ' , using IκappaB-epsilon (Phospho-Ser22) Antibody. The lane on the right is blocked with the phospho peptide.

Product Name: I κ B- ϵ (phospho Ser22) Rabbit Polyclonal Antibody
Catalog #: APRab04895



Immunohistochemical analysis of paraffin-embedded Human breast cancer. Antibody was diluted at 1:100 (4°, overnight) . High-pressure and temperature Tris-EDTA, pH 8.0 was used for antigen retrieval. Negative control (right) obtained from antibody was pre-absorbed by immunogen peptide.

Note

For research use only.