

**Product Name: Integrin  $\alpha$ 4 (phospho Ser1027) Rabbit Polyclonal Antibody**  
**Catalog #: APRab04850**

---



## Summary

<b>Production Name</b>	Integrin $\alpha$ 4 (phospho Ser1027) Rabbit Polyclonal Antibody
<b>Description</b>	Rabbit Polyclonal Antibody
<b>Host</b>	Rabbit
<b>Application</b>	IHC,ELISA
<b>Reactivity</b>	Human,Mouse

## Performance

<b>Conjugation</b>	Unconjugated
<b>Modification</b>	Phospho Antibody
<b>Isotype</b>	IgG
<b>Clonality</b>	Polyclonal
<b>Form</b>	Liquid
<b>Storage</b>	Store at 4°C short term. Aliquot and store at -20°C long term. Avoid freeze/thaw cycles.
<b>Buffer</b>	Liquid in PBS containing 50% glycerol, 0.5% BSA and 0.02% New type preservative N.
<b>Purification</b>	Affinity purification

## Immunogen

<b>Gene Name</b>	ITGA4
<b>Alternative Names</b>	ITGA4; CD49D; Integrin alpha-4; CD49 antigen-like family member D; Integrin alpha-IV; VLA-4 subunit alpha; CD antigen CD49d
<b>Gene ID</b>	3676.0
<b>SwissProt ID</b>	P13612.The antiserum was produced against synthesized peptide derived from human Integrin alpha4 around the phosphorylation site of Ser1027. AA range:983-1032

## Application

<b>Dilution Ratio</b>	IHC 1:100-1:300 ELISA: 1:5000
<b>Molecular Weight</b>	

**Product Name: Integrin  $\alpha$ 4 (phospho Ser1027) Rabbit Polyclonal Antibody**  
**Catalog #: AP Rab04850**



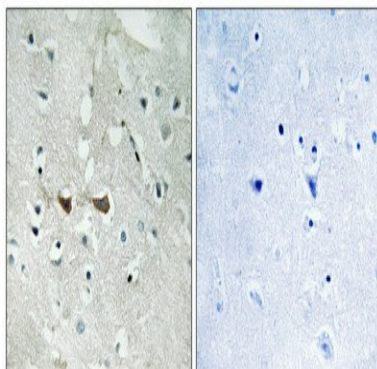
## Background

integrin subunit alpha 4 (ITGA4) Homo sapiens The gene encodes a member of the integrin alpha chain family of proteins. Integrins are heterodimeric integral membrane proteins composed of an alpha chain and a beta chain that function in cell surface adhesion and signaling. The encoded preproprotein is proteolytically processed to generate light and heavy chains that comprise the alpha 4 subunit. This subunit associates with a beta 1 or beta 7 subunit to form an integrin that may play a role in cell motility and migration. This integrin is a therapeutic target for the treatment of multiple sclerosis, Crohn's disease and inflammatory bowel disease. Alternative splicing results in multiple transcript variants. [provided by RefSeq, Oct 2015], domain: The SG1 motif is involved in binding to chondroitin sulfate glycosaminoglycan and cell adhesion., function: Integrins alpha-4/beta-1 (VLA-4) and alpha-4/beta-7 are receptors for fibronectin. They recognize one or more domains within the alternatively spliced CS-1 and CS-5 regions of fibronectin. They are also receptors for VCAM1. Integrin alpha-4/beta-1 recognizes the sequence Q-I-D-S in VCAM1. Integrin alpha-4/beta-7 is also a receptor for MADCAM1. It recognizes the sequence L-D-T in MADCAM1. On activated endothelial cells integrin VLA-4 triggers homotypic aggregation for most VLA-4-positive leukocyte cell lines. It may also participate in cytolytic T-cell interactions with target cells., PTM: Phosphorylation on Ser-1027 inhibits PXN binding., similarity: Belongs to the integrin alpha chain family., similarity: Contains 7 FG-GAP repeats., subunit: Heterodimer of an alpha and a beta subunit. The alpha subunit can sometimes be cleaved into two non-covalently associated fragments. Alpha-4 associates with either beta-1 or beta-7. Alpha-4 interacts with PXN, LPXN, and TGFB11/HIC5. Interacts with CSPG4 through CSPG4 chondroitin sulfate glycosaminoglycan.,

## Research Area

Focal adhesion; ECM-receptor interaction; Cell adhesion molecules (CAMs); Hematopoietic cell lineage; Leukocyte transendothelial migration; Intestinal immune network for IgA production; Regulates Actin and Cytoskeleton; Hypertrophic cardiomyopathy (HCM); Arrhythmogenic right ventricular cardiomyopathy (ARVC); Dilated cardiomyopathy;

## Image Data



Immunohistochemical analysis of paraffin-embedded Human brain. Antibody was diluted at 1:100 (4°, overnight). High-pressure and temperature Tris-EDTA, pH 8.0 was used for antigen retrieval. Negative control (right) obtained from antibody

**Product Name: Integrin  $\alpha$ 4 (phospho Ser1027) Rabbit  
Polyclonal Antibody  
Catalog #: APRab04850**

---



was pre-absorbed by immunogen peptide.

**Note**

For research use only.