

Product Name: IGF-IIR (phospho Ser2409) Rabbit Polyclonal Antibody
Catalog #: APRab04820

Summary

| | |
|------------------------|--|
| Production Name | IGF-IIR (phospho Ser2409) Rabbit Polyclonal Antibody |
| Description | Rabbit Polyclonal Antibody |
| Host | Rabbit |
| Application | ELISA,IHC,WB |
| Reactivity | Human,Mouse,Monkey |

Performance

| | |
|---------------------|--|
| Conjugation | Unconjugated |
| Modification | Phospho Antibody |
| Isotype | IgG |
| Clonality | Polyclonal |
| Form | Liquid |
| Storage | Store at 4°C short term. Aliquot and store at -20°C long term. Avoid freeze/thaw cycles. |
| Buffer | Liquid in PBS containing 50% glycerol, 0.5% BSA and 0.02% New type preservative N. |
| Purification | Affinity purification |

Immunogen

| | |
|--------------------------|---|
| Gene Name | IGF2R |
| Alternative Names | IGF2R; MPRI; Cation-independent mannose-6-phosphate receptor; CI Man-6-P receptor; CI-MPR; M6PR; 300 kDa mannose 6-phosphate receptor; MPR 300; Insulin-like growth factor 2 receptor; Insulin-like growth factor II receptor; IGF-II receptor; |
| Gene ID | 3482.0 |
| SwissProt ID | P11717.The antiserum was produced against synthesized peptide derived from human IGF2R around the phosphorylation site of Ser2409. AA range:2381-2430 |

Application

| | |
|-------------------------|--|
| Dilution Ratio | WB 1:500 - 1:2000. IHC 1:100 - 1:300. ELISA: 1:10000.. |
| Molecular Weight | 300kD |

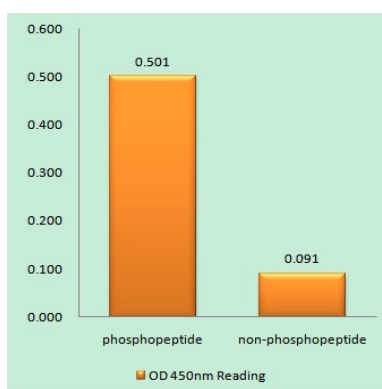
Background

This gene encodes a receptor for both insulin-like growth factor 2 and mannose 6-phosphate. The binding sites for each ligand are located on different segments of the protein. This receptor has various functions, including in the intracellular trafficking of lysosomal enzymes, the activation of transforming growth factor beta, and the degradation of insulin-like growth factor 2. Mutation or loss of heterozygosity of this gene has been associated with risk of hepatocellular carcinoma. The orthologous mouse gene is imprinted and shows exclusive expression from the maternal allele; however, imprinting of the human gene may be polymorphic, as only a minority of individuals showed biased expression from the maternal allele (PMID:8267611). [provided by RefSeq, Nov 2015], domain: Contains 15 repeating units of approximately 147 AA. The most highly conserved region within the repeat consists of a stretch of 13 AA that contains cysteines at both ends., function: Transport of phosphorylated lysosomal enzymes from the Golgi complex and the cell surface to lysosomes. Lysosomal enzymes bearing phosphomannosyl residues bind specifically to mannose-6-phosphate receptors in the Golgi apparatus and the resulting receptor-ligand complex is transported to an acidic prelysosomal compartment where the low pH mediates the dissociation of the complex. This receptor also binds IGF2., similarity: Belongs to the MRL1/IGF2R family., similarity: Contains 1 fibronectin type-II domain., subunit: Binds GGA1, GGA2 and GGA3.,

Research Area

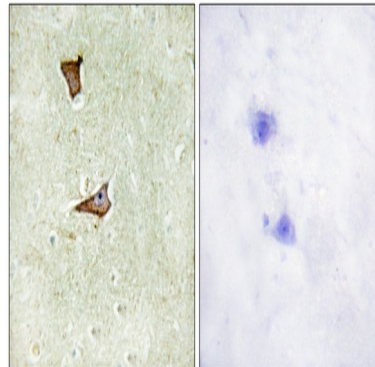
Lysosome;

Image Data

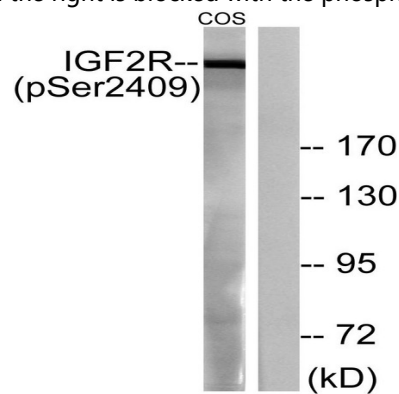


Enzyme-Linked Immunosorbent Assay (Phospho-ELISA) for Immunogen Phosphopeptide (Phospho-left) and Non-Phosphopeptide (Phospho-right), using IGF2R (Phospho-Ser2409) Antibody

Product Name: IGF-IIR (phospho Ser2409) Rabbit Polyclonal Antibody
Catalog #: APRab04820



Immunohistochemistry analysis of paraffin-embedded human brain, using IGF2R (Phospho-Ser2409) Antibody. The picture on the right is blocked with the phospho peptide.



Western blot analysis of lysates from COS7 cells treated with UV 15', using IGF2R (Phospho-Ser2409) Antibody. The lane on the right is blocked with the phospho peptide.

Note

For research use only.