

**Product Name: HSP90 $\beta$  (phospho Ser226) Rabbit Polyclonal Antibody**  
**Catalog #: APRab04807**

---

## Summary

<b>Production Name</b>	HSP90 $\beta$ (phospho Ser226) Rabbit Polyclonal Antibody
<b>Description</b>	Rabbit Polyclonal Antibody
<b>Host</b>	Rabbit
<b>Application</b>	IF, WB, ELISA
<b>Reactivity</b>	Human, Mouse, Rat

## Performance

<b>Conjugation</b>	Unconjugated
<b>Modification</b>	Phospho Antibody
<b>Isotype</b>	IgG
<b>Clonality</b>	Polyclonal
<b>Form</b>	Liquid
<b>Storage</b>	Store at 4°C short term. Aliquot and store at -20°C long term. Avoid freeze/thaw cycles.
<b>Buffer</b>	Liquid in PBS containing 50% glycerol, 0.5% BSA and 0.02% New type preservative N.
<b>Purification</b>	Affinity purification

## Immunogen

<b>Gene Name</b>	HSP90AB1
<b>Alternative Names</b>	HSP90AB1; HSP90B; HSPC2; HSPCB; Heat shock protein HSP 90-beta; HSP 90; Heat shock 84 kDa; HSP 84; HSP84
<b>Gene ID</b>	3326.0
<b>SwissProt ID</b>	P08238. The antiserum was produced against synthesized peptide derived from human HSP90B around the phosphorylation site of Ser226. AA range: 201-250

## Application

<b>Dilution Ratio</b>	WB 1:500 - 1:2000. IF 1:200 - 1:1000. ELISA: 1:10000. Not yet tested in other applications.
-----------------------	---

**Product Name: HSP90 $\beta$  (phospho Ser226) Rabbit Polyclonal Antibody**  
**Catalog #: APRab04807**

**Molecular Weight** 83kD

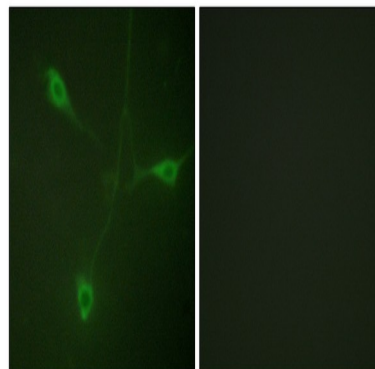
## Background

This gene encodes a member of the heat shock protein 90 family; these proteins are involved in signal transduction, protein folding and degradation and morphological evolution. This gene encodes the constitutive form of the cytosolic 90 kDa heat-shock protein and is thought to play a role in gastric apoptosis and inflammation. Alternative splicing results in multiple transcript variants. Pseudogenes have been identified on multiple chromosomes. [provided by RefSeq, Dec 2012],function:Molecular chaperone. Has ATPase activity.,PTM:Phosphorylated upon DNA damage, probably by ATM or ATR.,similarity:Belongs to the heat shock protein 90 family.,subcellular location:Identified by mass spectrometry in melanosome fractions from stage I to stage IV.,subunit:Homodimer. Interacts with TP53/p53 (By similarity). Interacts with UNC45A. Binding to UNC45A involves 2 UNC45A monomers per HSP90AB1 dimer.,

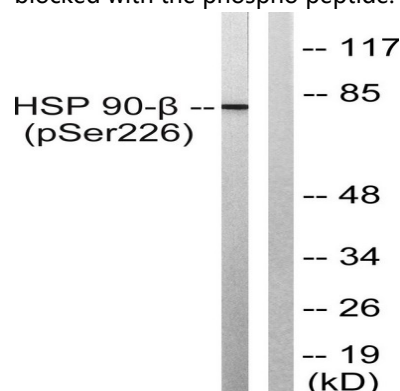
## Research Area

PI3K/Akt; Protein\_Acetylation

## Image Data



Immunofluorescence analysis of NIH/3T3 cells, using HSP90B (Phospho-Ser226) Antibody. The picture on the right is blocked with the phospho peptide.

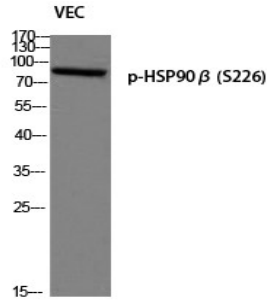


**Product Name: HSP90 $\beta$  (phospho Ser226) Rabbit Polyclonal Antibody**  
**Catalog #: APRab04807**

---

Western blot analysis of lysates from A549 cells treated with serum 20% 15', using HSP90B (Phospho-Ser226) Antibody.

The lane on the right is blocked with the phospho peptide.



Western blot analysis of VEC using p-HSP90 $\beta$  (S226) antibody.

## Note

For research use only.