

Product Name: HSL (phospho Ser552) Rabbit Polyclonal Antibody
Catalog #: APRab04800

Summary

Production Name	HSL (phospho Ser552) Rabbit Polyclonal Antibody
Description	Rabbit Polyclonal Antibody
Host	Rabbit
Application	IHC, WB, ELISA
Reactivity	Human, Mouse, Rat

Performance

Conjugation	Unconjugated
Modification	Phospho Antibody
Isotype	IgG
Clonality	Polyclonal
Form	Liquid
Storage	Store at 4°C short term. Aliquot and store at -20°C long term. Avoid freeze/thaw cycles.
Buffer	Liquid in PBS containing 50% glycerol, 0.5% BSA and 0.02% New type preservative N.
Purification	Affinity purification

Immunogen

Gene Name	LIPE
Alternative Names	LIPE; Hormone-sensitive lipase; HSL
Gene ID	3991.0
SwissProt ID	Q05469. The antiserum was produced against synthesized peptide derived from human HSL around the phosphorylation site of Ser552. AA range: 518-567

Application

Dilution Ratio	WB 1:500 - 1:2000. IHC 1:100 - 1:300. ELISA: 1:5000..
Molecular Weight	117kD

Product Name: HSL (phospho Ser552) Rabbit Polyclonal Antibody
Catalog #: AP Rab04800

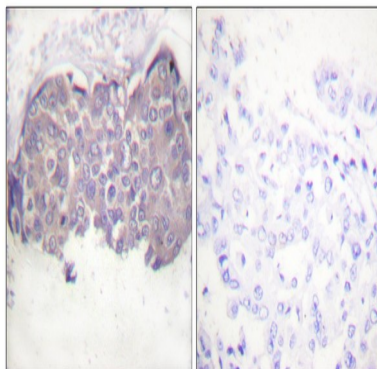
Background

The protein encoded by this gene has a long and a short form, generated by use of alternative translational start codons. The long form is expressed in steroidogenic tissues such as testis, where it converts cholesteryl esters to free cholesterol for steroid hormone production. The short form is expressed in adipose tissue, among others, where it hydrolyzes stored triglycerides to free fatty acids. [provided by RefSeq, Jul 2008], catalytic activity: Diacylglycerol + H₂O = monoacylglycerol + a carboxylate., catalytic activity: Monoacylglycerol + H₂O = glycerol + a carboxylate., catalytic activity: Triacylglycerol + H₂O = diacylglycerol + a carboxylate., enzyme regulation: Rapidly activated by cAMP-dependent phosphorylation under the influence of catecholamines. Dephosphorylation and inactivation are controlled by insulin., function: In adipose tissue and heart, it primarily hydrolyzes stored triglycerides to free fatty acids, while in steroidogenic tissues, it principally converts cholesteryl esters to free cholesterol for steroid hormone production., pathway: Glycerolipid metabolism; triacylglycerol degradation., similarity: Belongs to the 'GDXG' lipolytic enzyme family., subcellular location: Found in the high-density caveolae. Translocates to the cytoplasm from the caveolae upon insulin stimulation., subunit: Interacts with PTRF in the adipocyte cytoplasm.,

Research Area

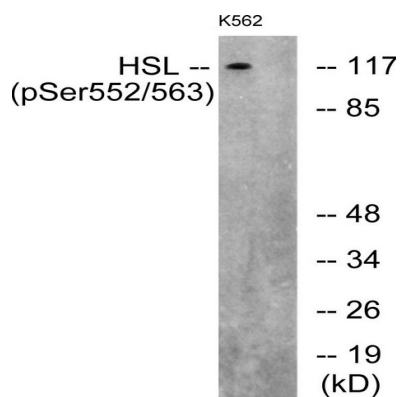
Insulin Receptor; AMPK

Image Data

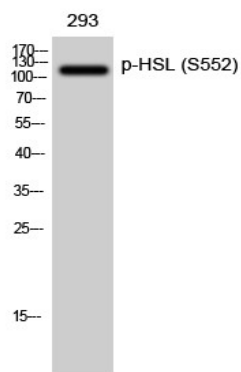


Immunohistochemistry analysis of paraffin-embedded human breast carcinoma, using HSL (Phospho-Ser552) Antibody.
The picture on the right is blocked with the phospho peptide.

Product Name: HSL (phospho Ser552) Rabbit Polyclonal Antibody
Catalog #: APRab04800



Western blot analysis of lysates from K562 cells, using HSL (Phospho-Ser552) Antibody. The lane on the right is blocked with the phospho peptide.



Western Blot analysis of 293 cells using Phospho-HSL (S552) Polyclonal Antibody diluted at 1: 500

Note

For research use only.