

Product Name: GSK3 α / β (phospho Tyr279/216) Rabbit Polyclonal Antibody
Catalog #: APRab04752



Summary

Production Name	GSK3 α / β (phospho Tyr279/216) Rabbit Polyclonal Antibody
Description	Rabbit Polyclonal Antibody
Host	Rabbit
Application	IF, WB, IHC, ELISA
Reactivity	Human, Mouse, Rat

Performance

Conjugation	Unconjugated
Modification	Phospho Antibody
Isotype	IgG
Clonality	Polyclonal
Form	Liquid
Storage	Store at 4°C short term. Aliquot and store at -20°C long term. Avoid freeze/thaw cycles.
Buffer	Liquid in PBS containing 50% glycerol, 0.5% BSA and 0.02% New type preservative N.
Purification	Affinity purification

Immunogen

Gene Name	GSK3A/GSK3B
Alternative Names	GSK3A; Glycogen synthase kinase-3 alpha; GSK-3 alpha; Serine/threonine-protein kinase GSK3A; GSK3B; Glycogen synthase kinase-3 beta; GSK-3 beta; Serine/threonine-protein kinase GSK3B
Gene ID	2931.0
SwissProt ID	P49840/P49841. The antiserum was produced against synthesized peptide derived from human GSK3 alpha/beta around the phosphorylation site of Tyr279/216. AA range: 246-295

Application

Dilution Ratio	IF 1:50-200 WB 1:500 - 1:2000. IHC 1:100 - 1:300. ELISA: 1:20000. Not yet tested in other
-----------------------	---

Product Name: GSK3 α/β (phospho Tyr279/216) Rabbit Polyclonal Antibody
Catalog #: APRab04752



applications.

Molecular Weight 51,46kD

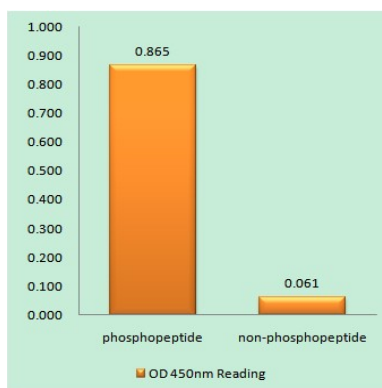
Background

glycogen synthase kinase 3 alpha(GSK3A) Homo sapiens This gene encodes a multifunctional Ser/Thr protein kinase that is implicated in the control of several regulatory proteins including glycogen synthase, and transcription factors, such as JUN. It also plays a role in the WNT and PI3K signaling pathways, as well as regulates the production of beta-amyloid peptides associated with Alzheimer's disease. [provided by RefSeq, Oct 2011],catalytic activity:ATP + [tau protein] = ADP + [tau protein] phosphate.,function:Implicated in the hormonal control of several regulatory proteins including glycogen synthase, MYB and the transcription factor JUN.,similarity:Belongs to the protein kinase superfamily.,similarity:Belongs to the protein kinase superfamily. CMGC Ser/Thr protein kinase family. GSK-3 subfamily.,similarity:Contains 1 protein kinase domain.,subunit:Monomer.,

Research Area

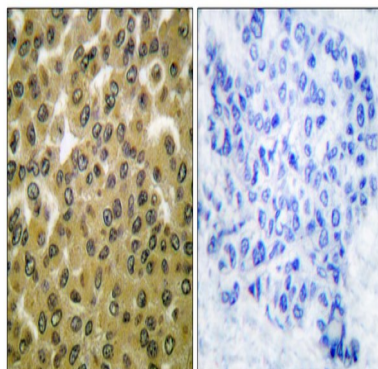
Chemokine;

Image Data

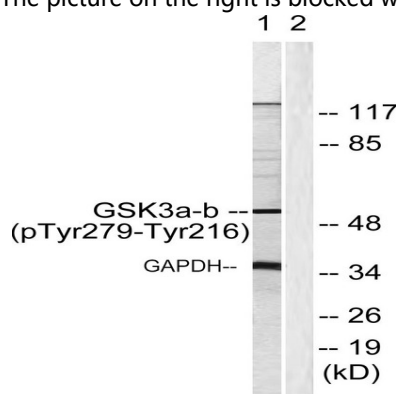


Enzyme-Linked Immunosorbent Assay (Phospho-ELISA) for Immunogen Phosphopeptide (Phospho-left) and Non-Phosphopeptide (Phospho-right) , using GSK3 alpha/beta (Phospho-Tyr279/216) Antibody

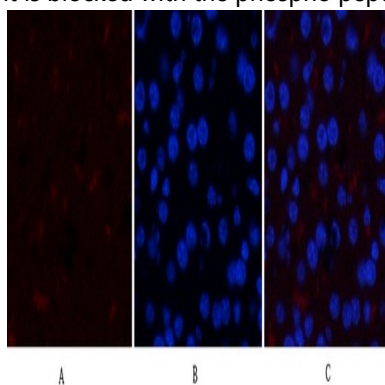
Product Name: GSK3 α/β (phospho Tyr279/216) Rabbit Polyclonal Antibody
Catalog #: APRab04752



Immunohistochemistry analysis of paraffin-embedded human breast carcinoma, using GSK3 α/β (Phospho-Tyr279/216) Antibody. The picture on the right is blocked with the phospho peptide.

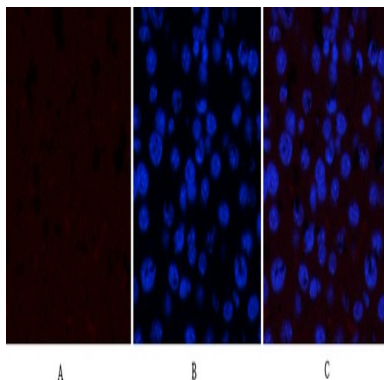


Western blot analysis of lysates from HeLa cells, using GSK3 α/β (Phospho-Tyr279/216) Antibody. The lane on the right is blocked with the phospho peptide.

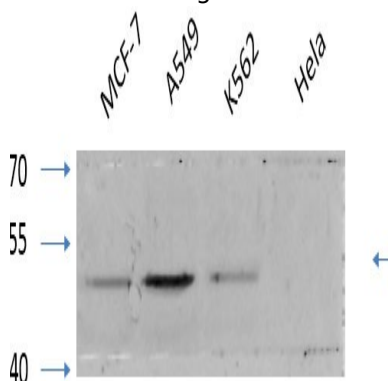


Immunofluorescence analysis of mouse-liver tissue. 1, GSK3 α/β (phospho Tyr279/216) Polyclonal Antibody (red) was diluted at 1:200 (4°C, overnight). 2, Cy3 labeled Secondary antibody was diluted at 1:300 (room temperature, 50min). 3, Picture B: DAPI (blue) 10min. Picture A: Target. Picture B: DAPI. Picture C: merge of A+B

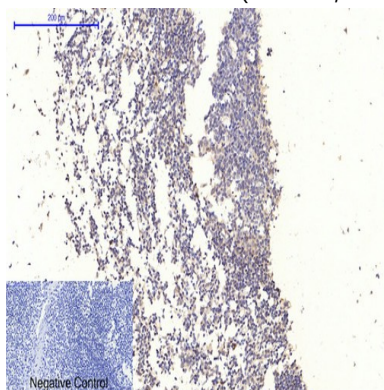
Product Name: GSK3 α/β (phospho Tyr279/216) Rabbit Polyclonal Antibody
Catalog #: APRab04752



Immunofluorescence analysis of mouse-liver tissue. 1,GSK3 α/β (phospho Tyr279/216) Polyclonal Antibody (red) was diluted at 1:200 (4°C,overnight) . 2, Cy3 labeled Secondary antibody was diluted at 1:300 (room temperature, 50min) .3, Picture B: DAPI (blue) 10min. Picture A:Target. Picture B: DAPI. Picture C: merge of A+B

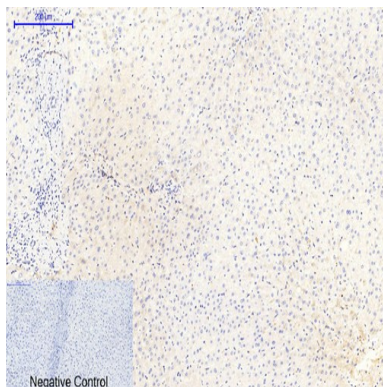


Western Blot analysis of various cells using primary antibody diluted at 1:1000 (4°C overnight) . Secondary antibody: Goat Anti-rabbit IgG IRDye 800 (diluted at 1:5000, 25°C, 1 hour) . Cell lysate was extracted by Minute™ Plasma Membrane Protein Isolation and Cell Fractionation Kit (SM-005, Inventbiotech,MN,USA) .

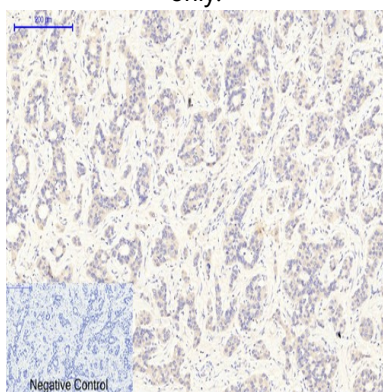


Immunohistochemical analysis of paraffin-embedded Human-Tonsil tissue. 1,GSK3 α/β (phospho Tyr279/216) Polyclonal Antibody was diluted at 1:200 (4°C,overnight) . 2, Sodium citrate pH 6.0 was used for antibody retrieval (>98°C,20min) . 3,Secondary antibody was diluted at 1:200 (room tempeRature, 30min) . Negative control was used by secondary antibody only.

Product Name: GSK3 α/β (phospho Tyr279/216) Rabbit Polyclonal Antibody
Catalog #: APRab04752



Immunohistochemical analysis of paraffin-embedded Human-liver tissue. 1,GSK3 α/β (phospho Tyr279/216) Polyclonal Antibody was diluted at 1:200 (4°C,overnight) . 2, Sodium citrate pH 6.0 was used for antibody retrieval (>98°C,20min) . 3,Secondary antibody was diluted at 1:200 (room tempeRature, 30min) . Negative control was used by secondary antibody only.



Immunohistochemical analysis of paraffin-embedded Human-liver-cancer tissue. 1,GSK3 α/β (phospho Tyr279/216) Polyclonal Antibody was diluted at 1:200 (4°C,overnight) . 2, Sodium citrate pH 6.0 was used for antibody retrieval (>98°C,20min) . 3,Secondary antibody was diluted at 1:200 (room tempeRature, 30min) . Negative control was used by secondary antibody only.

Note

For research use only.