

Product Name: GAP-43 (phospho Ser41) Rabbit Polyclonal Antibody
Catalog #: APRab04722

Summary

Production Name	GAP-43 (phospho Ser41) Rabbit Polyclonal Antibody
Description	Rabbit Polyclonal Antibody
Host	Rabbit
Application	IF,ELISA
Reactivity	Human,Mouse,Rat

Performance

Conjugation	Unconjugated
Modification	Phospho Antibody
Isotype	IgG
Clonality	Polyclonal
Form	Liquid
Storage	Store at 4°C short term. Aliquot and store at -20°C long term. Avoid freeze/thaw cycles.
Buffer	Liquid in PBS containing 50% glycerol, 0.5% BSA and 0.02% New type preservative N.
Purification	Affinity purification

Immunogen

Gene Name	GAP43
Alternative Names	GAP43; Neuromodulin; Axonal membrane protein GAP-43; Growth-associated protein 43; Neural phosphoprotein B-50; pp46
Gene ID	2596.0
SwissProt ID	P17677.The antiserum was produced against synthesized peptide derived from human GAP43 around the phosphorylation site of Ser41. AA range:8-57

Application

Dilution Ratio	IF 1:200 - 1:1000. ELISA: 1:20000
Molecular Weight	

Product Name: GAP-43 (phospho Ser41) Rabbit Polyclonal Antibody
Catalog #: APRab04722

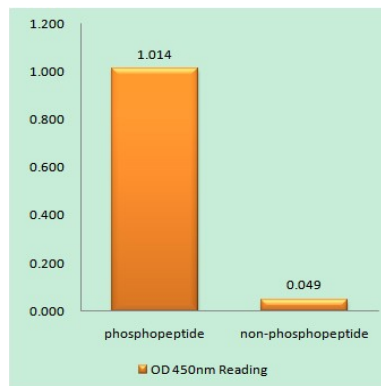


Background

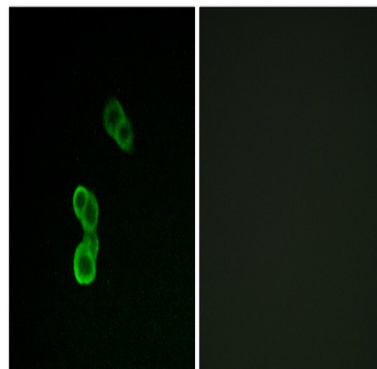
The protein encoded by this gene has been termed a 'growth' or 'plasticity' protein because it is expressed at high levels in neuronal growth cones during development and axonal regeneration. This protein is considered a crucial component of an effective regenerative response in the nervous system. Alternatively spliced transcript variants encoding distinct isoforms have been found for this gene. [provided by RefSeq, Jul 2008],function:This protein is associated with nerve growth. It is a major component of the motile "growth cones" that form the tips of elongating axons.,online information:Gap-43 entry,PTM:Phosphorylation of this protein by a protein kinase C is specifically correlated with certain forms of synaptic plasticity.,similarity:Belongs to the neuromodulin family.,similarity:Contains 1 IQ domain.,subcellular location:Cytoplasmic surface of growth cone and synaptic plasma membranes.,subunit:Binds calmodulin with a greater affinity in the absence of Ca(2+) than in its presence.,

Research Area

Image Data



Enzyme-Linked Immunosorbent Assay (Phospho-ELISA) for Immunogen Phosphopeptide (Phospho-left) and Non-Phosphopeptide (Phospho-right) , using GAP43 (Phospho-Ser41) Antibody





**Product Name: GAP-43 (phospho Ser41) Rabbit
Polyclonal Antibody
Catalog #: APRab04722**

Immunofluorescence analysis of MCF-7 cells, using GAP43 (Phospho-Ser41) Antibody. The picture on the right is blocked with the phospho peptide.

Note

For research use only.