

**Product Name: Gab 1 (phospho Tyr659) Rabbit Polyclonal Antibody**  
**Catalog #: APRab04716**

---

## Summary

<b>Production Name</b>	Gab 1 (phospho Tyr659) Rabbit Polyclonal Antibody
<b>Description</b>	Rabbit Polyclonal Antibody
<b>Host</b>	Rabbit
<b>Application</b>	ELISA,IF,IHC,WB
<b>Reactivity</b>	Human,Mouse,Rat

## Performance

<b>Conjugation</b>	Unconjugated
<b>Modification</b>	Phospho Antibody
<b>Isotype</b>	IgG
<b>Clonality</b>	Polyclonal
<b>Form</b>	Liquid
<b>Storage</b>	Store at 4°C short term. Aliquot and store at -20°C long term. Avoid freeze/thaw cycles.
<b>Buffer</b>	Liquid in PBS containing 50% glycerol, 0.5% BSA and 0.02% New type preservative N.
<b>Purification</b>	Affinity purification

## Immunogen

<b>Gene Name</b>	GAB1
<b>Alternative Names</b>	GAB1; GRB2-associated-binding protein 1; GRB2-associated binder 1; Growth factor receptor bound protein 2-associated protein 1
<b>Gene ID</b>	2549.0
<b>SwissProt ID</b>	Q13480.The antiserum was produced against synthesized peptide derived from human GAB1 around the phosphorylation site of Tyr659. AA range:644-674

## Application

<b>Dilution Ratio</b>	WB 1:500 - 1:2000. IHC 1:100 - 1:300. IF 1:200 - 1:1000. ELISA: 1:5000. Not yet tested in other applications.
-----------------------	---------------------------------------------------------------------------------------------------------------

**Product Name: Gab 1 (phospho Tyr659) Rabbit Polyclonal Antibody**  
**Catalog #: AP Rab04716**

**Molecular Weight** 76kD

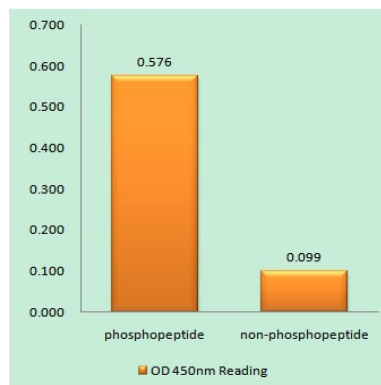
## Background

GRB2 associated binding protein 1 (GAB1) Homo sapiens The protein encoded by this gene is a member of the IRS1-like multisubstrate docking protein family. It is an important mediator of branching tubulogenesis and plays a central role in cellular growth response, transformation and apoptosis. Two transcript variants encoding different isoforms have been found for this gene. [provided by RefSeq, Aug 2008], function: Probably involved in EGF and insulin receptor signaling., PTM: Phosphorylated on tyrosine residue(s) by the epidermal growth factor receptor (EGFR) and the insulin receptor (INSR). Tyrosine phosphorylation of GAB1 mediates interaction with several proteins that contain SH2 domains., similarity: Belongs to the GAB family., similarity: Contains 1 PH domain., subunit: Interacts with GRB2 and with other SH2-containing proteins. Interacts with phosphorylated LAT2.,

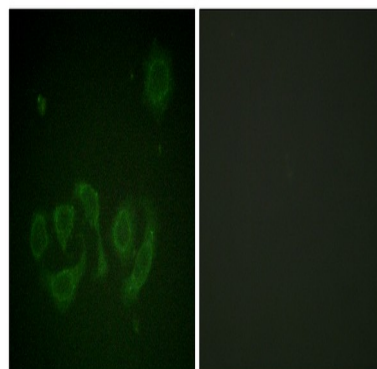
## Research Area

ErbB\_HER; Neurotrophin; Renal cell carcinoma;

## Image Data

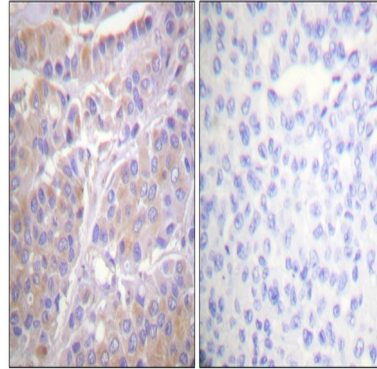


Enzyme-Linked Immunosorbent Assay (Phospho-ELISA) for Immunogen Phosphopeptide (Phospho-left) and Non-Phosphopeptide (Phospho-right), using GAB1 (Phospho-Tyr659) Antibody

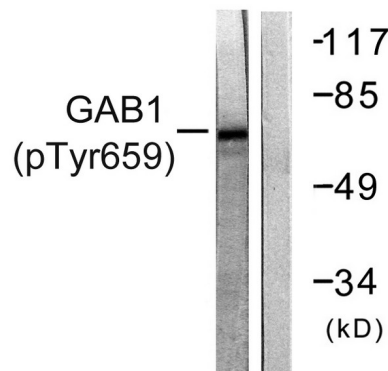


**Product Name: Gab 1 (phospho Tyr659) Rabbit Polyclonal Antibody**  
**Catalog #: APRab04716**

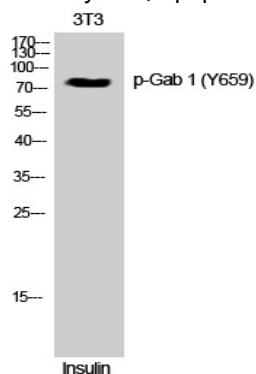
Immunofluorescence analysis of HepG2 cell, using GAB1 (Phospho-Tyr659) Antibody. The lane on the right is blocked with the GAB1 (Phospho-Tyr659) peptide.



Immunohistochemistry analysis of paraffin-embedded human breast cancer, using GAB1 (Phospho-Tyr659) Antibody. The picture on the right is blocked with the GAB1 (Phospho-Tyr659) peptide.



Western blot analysis of GAB1 (Phospho-Tyr659) Antibody. The lane on the right is blocked with the GAB1 (Phospho-Tyr659) peptide.



Western Blot analysis of 3T3 cells using Phospho-Gab 1 (Y659) Polyclonal Antibody

## Note

For research use only.

**Product Name: Gab 1 (phospho Tyr659) Rabbit  
Polyclonal Antibody  
Catalog #: APRab04716**

---

