

Product Name: Gab 1 (phospho Tyr627) Rabbit Polyclonal Antibody
Catalog #: APRab04715

Summary

Production Name	Gab 1 (phospho Tyr627) Rabbit Polyclonal Antibody
Description	Rabbit Polyclonal Antibody
Host	Rabbit
Application	ELISA, WB,
Reactivity	Human, Mouse, Monkey

Performance

Conjugation	Unconjugated
Modification	Phospho Antibody
Isotype	IgG
Clonality	Polyclonal
Form	Liquid
Storage	Store at 4°C short term. Aliquot and store at -20°C long term. Avoid freeze/thaw cycles.
Buffer	Liquid in PBS containing 50% glycerol, 0.5% BSA and 0.02% New type preservative N.
Purification	Affinity purification

Immunogen

Gene Name	GAB1
Alternative Names	GAB1; GRB2-associated-binding protein 1; GRB2-associated binder 1; Growth factor receptor bound protein 2-associated protein 1
Gene ID	2549.0
SwissProt ID	Q13480. The antiserum was produced against synthesized peptide derived from human GAB1 around the phosphorylation site of Tyr627 AA range:611-643

Application

Dilution Ratio	WB 1:500 - 1:2000. ELISA: 1:10000. Not yet tested in other applications.
Molecular Weight	110kD

Product Name: Gab 1 (phospho Tyr627) Rabbit Polyclonal Antibody
Catalog #: APRab04715

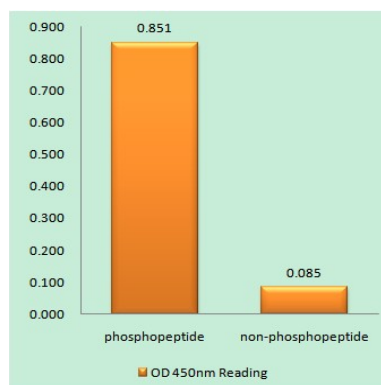
Background

GRB2 associated binding protein 1(GAB1) Homo sapiens The protein encoded by this gene is a member of the IRS1-like multisubstrate docking protein family. It is an important mediator of branching tubulogenesis and plays a central role in cellular growth response, transformation and apoptosis. Two transcript variants encoding different isoforms have been found for this gene. [provided by RefSeq, Aug 2008],function:Probably involved in EGF and insulin receptor signaling.,PTM:Phosphorylated on tyrosine residue(s) by the epidermal growth factor receptor (EGFR) and the insulin receptor (INSR). Tyrosine phosphorylation of GAB1 mediates interaction with several proteins that contain SH2 domains.,similarity:Belongs to the GAB family.,similarity:Contains 1 PH domain.,subunit:Interacts with GRB2 and with other SH2-containing proteins. Interacts with phosphorylated LAT2.,

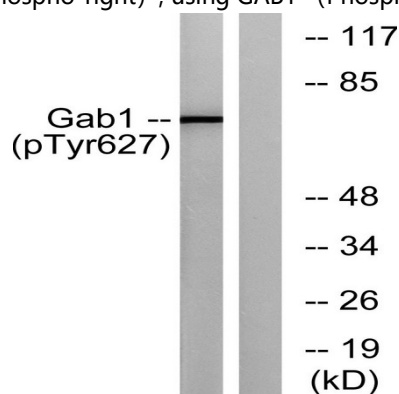
Research Area

ErbB_HER;Neurotrophin;Renal cell carcinoma;

Image Data

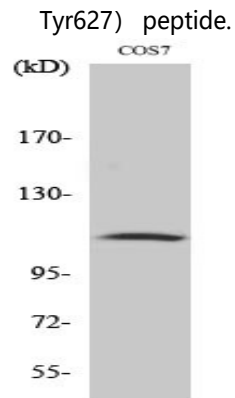


Enzyme-Linked Immunosorbent Assay (Phospho-ELISA) for Immunogen Phosphopeptide (Phospho-left) and Non-Phosphopeptide (Phospho-right), using GAB1 (Phospho-Tyr627) Antibody



Western blot analysis of GAB1 (Phospho-Tyr627) Antibody. The lane on the right is blocked with the GAB1 (Phospho-

**Product Name: Gab 1 (phospho Tyr627) Rabbit
Polyclonal Antibody
Catalog #: APRab04715**



Western Blot analysis of various cells using Phospho-Gab 1 (Y627) Polyclonal Antibody

Note

For research use only.