

Product Name: Ephrin-B1 (phospho Tyr317) Rabbit Polyclonal Antibody
Catalog #: APRab04617

Summary

Production Name	Ephrin-B1 (phospho Tyr317) Rabbit Polyclonal Antibody
Description	Rabbit Polyclonal Antibody
Host	Rabbit
Application	ELISA, WB,
Reactivity	Human, Mouse, Rat

Performance

Conjugation	Unconjugated
Modification	Phospho Antibody
Isotype	IgG
Clonality	Polyclonal
Form	Liquid
Storage	Store at 4°C short term. Aliquot and store at -20°C long term. Avoid freeze/thaw cycles.
Buffer	Liquid in PBS containing 50% glycerol, 0.5% BSA and 0.02% New type preservative N.
Purification	Affinity purification

Immunogen

Gene Name	EFNB1
Alternative Names	EFNB1; EFL3; EPLG2; LERK2; Ephrin-B1; EFL-3; ELK ligand; ELK-L; EPH-related receptor tyrosine kinase ligand 2; LERK-2
Gene ID	1947.0
SwissProt ID	P98172. The antiserum was produced against synthesized peptide derived from human EFNB1 around the phosphorylation site of Tyr317. AA range: 283-332

Application

Dilution Ratio	WB 1:500 - 1:2000. ELISA: 1:20000. Not yet tested in other applications.
Molecular Weight	30kD

Product Name: Ephrin-B1 (phospho Tyr317) Rabbit Polyclonal Antibody
Catalog #: AP Rab04617



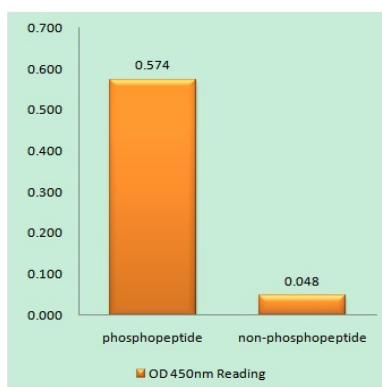
Background

The protein encoded by this gene is a type I membrane protein and a ligand of Eph-related receptor tyrosine kinases. It may play a role in cell adhesion and function in the development or maintenance of the nervous system. [provided by RefSeq, Jul 2008],disease:Defects in EFNB1 are a cause of craniofrontonasal syndrome (CFNS) [MIM:304110]; also known as craniofrontonasal dysplasia (CFND). CFNS is an X-linked inherited syndrome characterized by hypertelorism, coronal synostosis with brachycephaly, downslanting palpebral fissures, clefting of the nasal tip, joint anomalies, longitudinally grooved fingernails and other digital anomalies.,function: Binds to the receptor tyrosine kinases EPHB1 and EPHA1. Binds to, and induce the collapse of, commissural axons/growth cones in vitro. May play a role in constraining the orientation of longitudinally projecting axons.,induction: By TNF-alpha.,PTM: Inducible phosphorylation of tyrosine residues in the cytoplasmic domain.,similarity: Belongs to the ephrin family.,subunit: Interacts with GRIP1 and GRIP2.,tissue specificity: Heart, placenta, lung, liver, skeletal muscle, kidney, pancreas.,

Research Area

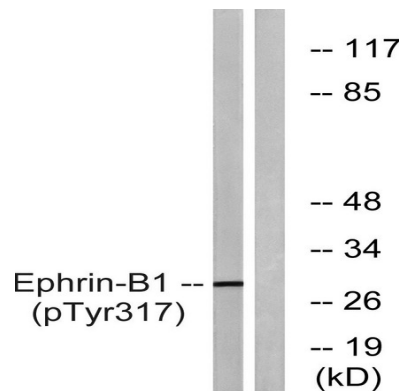
Axon guidance;

Image Data

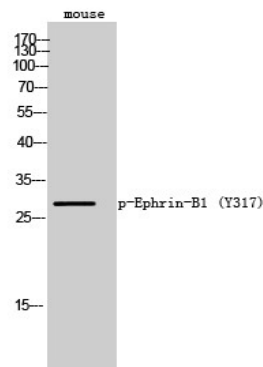


Enzyme-Linked Immunosorbent Assay (Phospho-ELISA) for Immunogen Phosphopeptide (Phospho-left) and Non-Phosphopeptide (Phospho-right) , using EFNB1 (Phospho-Tyr317) Antibody

Product Name: Ephrin-B1 (phospho Tyr317) Rabbit Polyclonal Antibody
Catalog #: APRab04617



Western blot analysis of lysates from mouse brain, using EFNB1 (Phospho-Tyr317) Antibody. The lane on the right is blocked with the phospho peptide.



Western Blot analysis of mouse cells using Phospho-Ephrin-B1 (Y317) Polyclonal Antibody

Note

For research use only.