

Product Name: Cytokeratin 8 (phospho Ser73) Rabbit Polyclonal Antibody
Catalog #: APRab04533



Summary

Production Name	Cytokeratin 8 (phospho Ser73) Rabbit Polyclonal Antibody
Description	Rabbit Polyclonal Antibody
Host	Rabbit
Application	WB,IHC,IF,ELISA
Reactivity	Human,Mouse

Performance

Conjugation	Unconjugated
Modification	Phospho Antibody
Isotype	IgG
Clonality	Polyclonal
Form	Liquid
Storage	Store at 4°C short term. Aliquot and store at -20°C long term. Avoid freeze/thaw cycles.
Buffer	Liquid in PBS containing 50% glycerol, 0.5% BSA and 0.02% New type preservative N.
Purification	Affinity purification

Immunogen

Gene Name	KRT8
Alternative Names	KRT8; CYK8; Keratin; type II cytoskeletal 8; Cytokeratin-8; CK-8; Keratin-8; K8; Type-II keratin Kb8
Gene ID	3856.0
SwissProt ID	P05787.The antiserum was produced against synthesized peptide derived from human Keratin 8 around the phosphorylation site of Ser73. AA range:41-90

Application

Dilution Ratio	WB 1:500 - 1:2000. IHC 1:100 - 1:300. ELISA: 1:40000.. IF 1:50-200
Molecular Weight	55kD

Product Name: Cytokeratin 8 (phospho Ser73) Rabbit Polyclonal Antibody
Catalog #: AP Rab04533

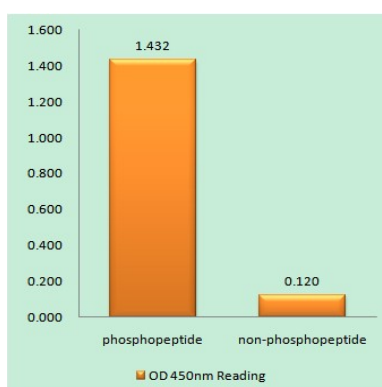


Background

keratin 8(KRT8) Homo sapiens This gene is a member of the type II keratin family clustered on the long arm of chromosome 12. Type I and type II keratins heteropolymerize to form intermediate-sized filaments in the cytoplasm of epithelial cells. The product of this gene typically dimerizes with keratin 18 to form an intermediate filament in simple single-layered epithelial cells. This protein plays a role in maintaining cellular structural integrity and also functions in signal transduction and cellular differentiation. Mutations in this gene cause cryptogenic cirrhosis. Alternatively spliced transcript variants have been found for this gene. [provided by RefSeq, Jan 2012],disease:Defects in KRT8 are a cause of cryptogenic cirrhosis [MIM:215600],function:Together with KRT19, helps to link the contractile apparatus to dystrophin at the costameres of striated muscle.,miscellaneous:There are two types of cytoskeletal and microfibrillar keratin: I (acidic; 40-55 kDa) and II (neutral to basic; 56-70 kDa),PTM:O-glycosylated at multiple sites; glycans consist of single N-acetylglucosamine residues.,PTM:Phosphorylation on serine residues is enhanced during EGF stimulation and mitosis. Ser-74 phosphorylation plays an important role in keratin filament reorganization.,similarity:Belongs to the intermediate filament family.,subunit:Heterotetramer of two type I and two type II keratins. keratin-8 associates with keratin-18. Associates with KRT20. Interacts with HCV core protein and PNN. When associated with KRT19, interacts with DMD. Interacts with TCHP.,tissue specificity:Observed in muscle fibers accumulating in the costameres of myoplasm at the sarcolemma membrane in structures that contain dystrophin and spectrin. Expressed in gingival mucosa and hard palate of the oral cavity.,

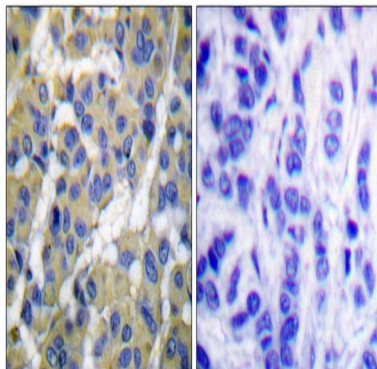
Research Area

Image Data

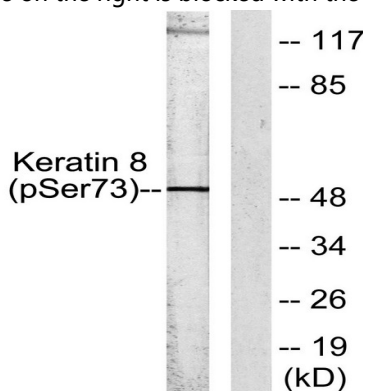


Enzyme-Linked Immunosorbent Assay (Phospho-ELISA) for Immunogen Phosphopeptide (Phospho-left) and Non-Phosphopeptide (Phospho-right) , using Keratin 8 (Phospho-Ser73) Antibody

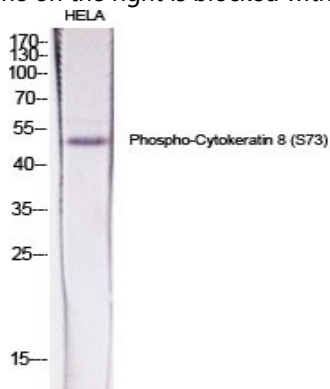
Product Name: Cytokeratin 8 (phospho Ser73) Rabbit Polyclonal Antibody
Catalog #: APRab04533



Immunohistochemistry analysis of paraffin-embedded human breast carcinoma, using Keratin 8 (Phospho-Ser73) Antibody. The picture on the right is blocked with the phospho peptide.

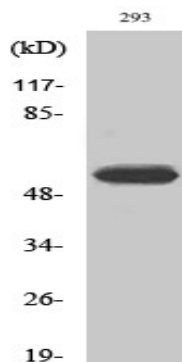


Western blot analysis of lysates from 293 cells treated with Etoposide 25uM 60 ', using Keratin 8 (Phospho-Ser73) Antibody. The lane on the right is blocked with the phospho peptide.

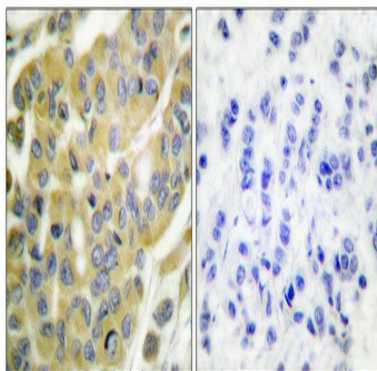


Western Blot analysis of various cells using Phospho-Cytokeratin 8 (S73) Polyclonal Antibody diluted at 1: 500

**Product Name: Cytokeratin 8 (phospho Ser73) Rabbit
Polyclonal Antibody
Catalog #: APRab04533**



Western Blot analysis of 293 cells using Phospho-Cytokeratin 8 (S73) Polyclonal Antibody diluted at 1 : 500



Immunohistochemical analysis of paraffin-embedded Human breast cancer. Antibody was diluted at 1:100 (4°, overnight) . High-pressure and temperature Tris-EDTA, pH 8.0 was used for antigen retrieval. Negative control (right) obtained from antibody was pre-absorbed by immunogen peptide.

Note

For research use only.