

**Product Name: Cyclin B1 (phospho Ser147) Rabbit Polyclonal Antibody**  
**Catalog #: APRab04518**

---

## Summary

<b>Production Name</b>	Cyclin B1 (phospho Ser147) Rabbit Polyclonal Antibody
<b>Description</b>	Rabbit Polyclonal Antibody
<b>Host</b>	Rabbit
<b>Application</b>	ELISA,IHC,WB
<b>Reactivity</b>	Human,Mouse,Rat

## Performance

<b>Conjugation</b>	Unconjugated
<b>Modification</b>	Phospho Antibody
<b>Isotype</b>	IgG
<b>Clonality</b>	Polyclonal
<b>Form</b>	Liquid
<b>Storage</b>	Store at 4°C short term. Aliquot and store at -20°C long term. Avoid freeze/thaw cycles.
<b>Buffer</b>	Liquid in PBS containing 50% glycerol, 0.5% BSA and 0.02% New type preservative N.
<b>Purification</b>	Affinity purification

## Immunogen

<b>Gene Name</b>	CCNB1
<b>Alternative Names</b>	CCNB1; CCNB; G2/mitotic-specific cyclin-B1
<b>Gene ID</b>	891.0
<b>SwissProt ID</b>	P14635.The antiserum was produced against synthesized peptide derived from human Cyclin B1 around the phosphorylation site of Ser147. AA range:121-170

## Application

<b>Dilution Ratio</b>	WB 1:500 - 1:2000. IHC 1:100 - 1:300. ELISA: 1:10000..
<b>Molecular Weight</b>	60kD

**Product Name: Cyclin B1 (phospho Ser147) Rabbit Polyclonal Antibody**  
**Catalog #: AP Rab04518**



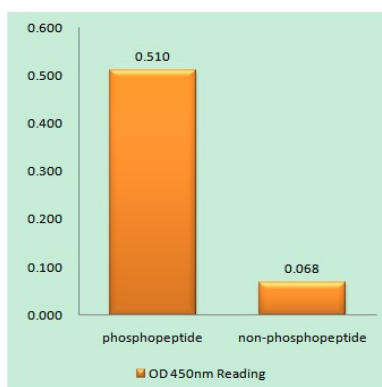
## Background

The protein encoded by this gene is a regulatory protein involved in mitosis. The gene product complexes with p34(cdc2) to form the maturation-promoting factor (MPF). Two alternative transcripts have been found, a constitutively expressed transcript and a cell cycle-regulated transcript, that is expressed predominantly during G2/M phase. The different transcripts result from the use of alternate transcription initiation sites. [provided by RefSeq, Jul 2008], developmental stage: Accumulates steadily during G2 and is abruptly destroyed at mitosis., function: Essential for the control of the cell cycle at the G2/M (mitosis) transition., PTM: Ubiquitinated by the SCF(NIPA) complex during interphase, leading to its destruction. Not ubiquitinated during G2/M phases., similarity: Belongs to the cyclin family., similarity: Belongs to the cyclin family. Cyclin AB subfamily., subunit: Interacts with the CDC2 protein kinase to form a serine/threonine kinase holoenzyme complex also known as maturation promoting factor (MPF). The cyclin subunit imparts substrate specificity to the complex. Binds HEI10. Interacts with catalytically active RALBP1 and CDC2 during mitosis to form an endocytotic complex during interphase.,

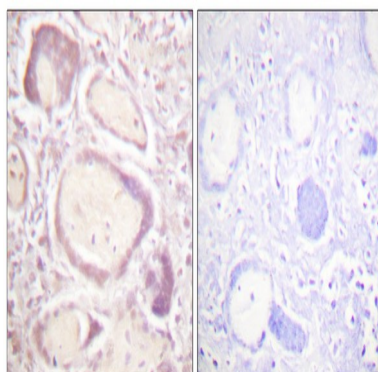
## Research Area

AMPK

## Image Data



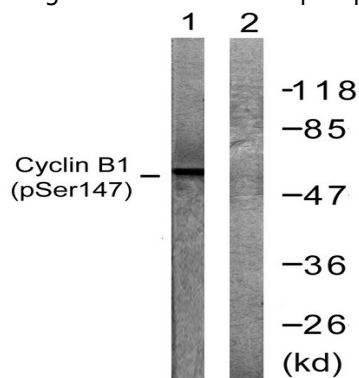
Enzyme-Linked Immunosorbent Assay (Phospho-ELISA) for Immunogen Phosphopeptide (Phospho-left) and Non-Phosphopeptide (Phospho-right), using Cyclin B1 (Phospho-Ser147) Antibody



**Product Name: Cyclin B1 (phospho Ser147) Rabbit  
Polyclonal Antibody  
Catalog #: APRab04518**



Immunohistochemistry analysis of paraffin-embedded human placenta, using Cyclin B1 (Phospho-Ser147) Antibody. The picture on the right is blocked with the phospho peptide.



Western blot analysis of lysates from Jurkat cells treated with UV 15', using Cyclin B1 (Phospho-Ser147) Antibody. The lane on the right is blocked with the phospho peptide.

## Note

For research use only.