

Product Name: CtBP1 (phospho Ser422) Rabbit Polyclonal Antibody
Catalog #: APRab04515

Summary

Production Name	CtBP1 (phospho Ser422) Rabbit Polyclonal Antibody
Description	Rabbit Polyclonal Antibody
Host	Rabbit
Application	IHC, WB, ELISA
Reactivity	Human, Mouse, Rat

Performance

Conjugation	Unconjugated
Modification	Phospho Antibody
Isotype	IgG
Clonality	Polyclonal
Form	Liquid
Storage	Store at 4°C short term. Aliquot and store at -20°C long term. Avoid freeze/thaw cycles.
Buffer	Liquid in PBS containing 50% glycerol, 0.5% BSA and 0.02% New type preservative N.
Purification	Affinity purification

Immunogen

Gene Name	CTBP1
Alternative Names	CTBP1; CTBP; C-terminal-binding protein 1; CtBP1
Gene ID	1487.0
SwissProt ID	Q13363. The antiserum was produced against synthesized peptide derived from human CtBP1 around the phosphorylation site of Ser422. AA range: 388-437

Application

Dilution Ratio	WB 1:500 - 1:2000. IHC 1:100 - 1:300. ELISA: 1:10000..
Molecular Weight	48kD

**Product Name: CtBP1 (phospho Ser422) Rabbit
Polyclonal Antibody
Catalog #: AP Rab04515**

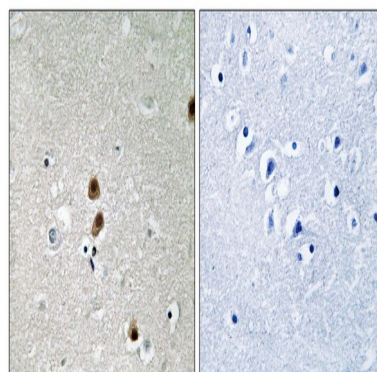
Background

This gene encodes a protein that binds to the C-terminus of adenovirus E1A proteins. This phosphoprotein is a transcriptional repressor and may play a role during cellular proliferation. This protein and the product of a second closely related gene, CTBP2, can dimerize. Both proteins can also interact with a polycomb group protein complex which participates in regulation of gene expression during development. Alternative splicing of transcripts from this gene results in multiple transcript variants. [provided by RefSeq, Jul 2008], cofactor: NAD. Required for efficient interaction with E1A. Cofactor binding induces a conformation change., function: Involved in controlling the equilibrium between tubular and stacked structures in the Golgi complex (By similarity). Co-repressor targeting diverse transcription regulators such as GLIS2. Has dehydrogenase activity., PTM: ADP-ribosylated; when cells are exposed to brefeldin-A (BFA), PTM: Sumoylation on Lys-428 is promoted by the E3 SUMO-protein ligase CBX4., PTM: The level of phosphorylation appears to be regulated during the cell cycle. Phosphorylated upon DNA damage, probably by ATM or ATR. Phosphorylation by HIPK2 on Ser-422 induces proteasomal degradation., similarity: Belongs to the D-isomer specific 2-hydroxyacid dehydrogenase family., subunit: Interacts with the C-terminus of adenovirus E1A protein, ELK3 and CTIP via their consensus motif P-X-[DNS]-L-[STVA]. Can form homodimers or heterodimers of CTBP1 and CTBP2. Interacts with FOXP2, HDAC4, HDAC5 and HDAC9. Interacts with GLIS2 but not GLIS1 or GLIS3 (By similarity). Interacts with FOXP1, HIPK2, PNN and NRIP1. Interacts with ZFXH1B and WIZ. Interacts with Epstein-Barr virus EBNA3 and EBNA6.,

Research Area

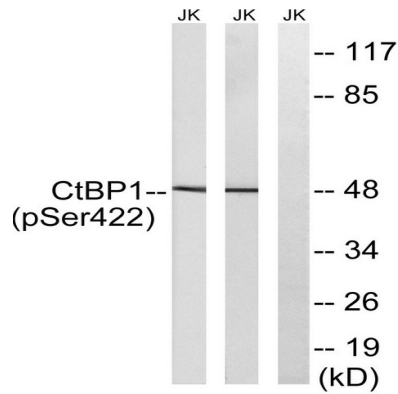
WNT; WNT-T CELL Notch; Pathways in cancer; Chronic myeloid leukemia;

Image Data

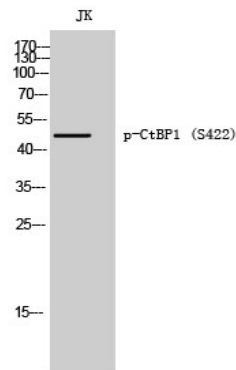


Immunohistochemistry analysis of paraffin-embedded human brain, using CtBP1 (Phospho-Ser422) Antibody. The picture on the right is blocked with the phospho peptide.

Product Name: CtBP1 (phospho Ser422) Rabbit Polyclonal Antibody
Catalog #: APRab04515



Western blot analysis of lysates from Jurkat cells treated with TNF 20ng/ml 30 ' and Jurkat cells treated with UV 15 ' , using CtBP1 (Phospho-Ser422) Antibody. The lane on the right is blocked with the phospho peptide.



Western Blot analysis of JK cells using Phospho-CtBP1 (S422) Polyclonal Antibody

Note

For research use only.