

Product Name: Cdc6 (phospho Ser54) Rabbit Polyclonal Antibody
Catalog #: APRab04427

Summary

Production Name	Cdc6 (phospho Ser54) Rabbit Polyclonal Antibody
Description	Rabbit Polyclonal Antibody
Host	Rabbit
Application	ELISA,IHC,WB
Reactivity	Human,Mouse,Monkey

Performance

Conjugation	Unconjugated
Modification	Phospho Antibody
Isotype	IgG
Clonality	Polyclonal
Form	Liquid
Storage	Store at 4°C short term. Aliquot and store at -20°C long term. Avoid freeze/thaw cycles.
Buffer	Liquid in PBS containing 50% glycerol, 0.5% BSA and 0.02% New type preservative N.
Purification	Affinity purification

Immunogen

Gene Name	CDC6
Alternative Names	CDC6; CDC18L; Cell division control protein 6 homolog; CDC6-related protein; Cdc18-related protein; HsCdc18; p62(cdc6); HsCDC6
Gene ID	990.0
SwissProt ID	Q99741.The antiserum was produced against synthesized peptide derived from human CDC6 around the phosphorylation site of Ser54. AA range:20-69

Application

Dilution Ratio	WB 1:500 - 1:2000. IHC 1:100 - 1:300. ELISA: 1:5000..
Molecular Weight	62kD

Product Name: Cdc6 (phospho Ser54) Rabbit Polyclonal Antibody
Catalog #: AP Rab04427



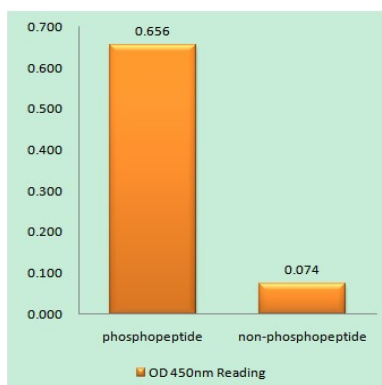
Background

The protein encoded by this gene is highly similar to *Saccharomyces cerevisiae* Cdc6, a protein essential for the initiation of DNA replication. This protein functions as a regulator at the early steps of DNA replication. It localizes in cell nucleus during cell cycle G1, but translocates to the cytoplasm at the start of S phase. The subcellular translocation of this protein during cell cycle is regulated through its phosphorylation by Cdks. Transcription of this protein was reported to be regulated in response to mitogenic signals through transcriptional control mechanism involving E2F proteins. [provided by RefSeq, Jul 2008],function:Involved in the initiation of DNA replication. Also participates in checkpoint controls that ensure DNA replication is completed before mitosis is initiated.,similarity:Belongs to the CDC6/cdc18 family.,subcellular location:The protein is nuclear in G1 and cytoplasmic in S-phase cells.,subunit:Interacts with PCNA, ORC1L, cyclin-CDK and HUWE1.,

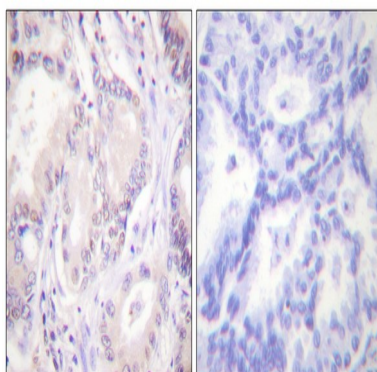
Research Area

Cell_Cycle_G1S;Cell_Cycle_G2M_DNA;

Image Data



Enzyme-Linked Immunosorbent Assay (Phospho-ELISA) for Immunogen Phosphopeptide (Phospho-left) and Non-Phosphopeptide (Phospho-right), using CDC6 (Phospho-Ser54) Antibody

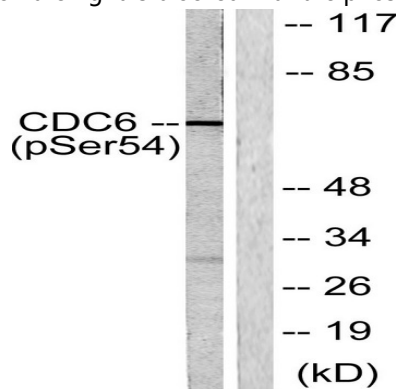


Immunohistochemistry analysis of paraffin-embedded human lung carcinoma, using CDC6 (Phospho-Ser54) Antibody.

Product Name: Cdc6 (phospho Ser54) Rabbit Polyclonal Antibody
Catalog #: APRab04427



The picture on the right is blocked with the phospho peptide.



Western blot analysis of lysates from COS7 cells treated with EGF 200ng/ml 30', using CDC6 (Phospho-Ser54) Antibody.

The lane on the right is blocked with the phospho peptide.

Note

For research use only.