

**Product Name: Casein Kinase I $\alpha$  (phospho Tyr321)  
Rabbit Polyclonal Antibody  
Catalog #: APRab04364**

---

## Summary

<b>Production Name</b>	Casein Kinase I $\alpha$ (phospho Tyr321) Rabbit Polyclonal Antibody
<b>Description</b>	Rabbit Polyclonal Antibody
<b>Host</b>	Rabbit
<b>Application</b>	ELISA, WB,
<b>Reactivity</b>	Human, Mouse, Rat

## Performance

<b>Conjugation</b>	Unconjugated
<b>Modification</b>	Phospho Antibody
<b>Isotype</b>	IgG
<b>Clonality</b>	Polyclonal
<b>Form</b>	Liquid
<b>Storage</b>	Store at 4°C short term. Aliquot and store at -20°C long term. Avoid freeze/thaw cycles.
<b>Buffer</b>	Liquid in PBS containing 50% glycerol, 0.5% BSA and 0.02% New type preservative N.
<b>Purification</b>	Affinity purification

## Immunogen

<b>Gene Name</b>	CSNK1A1
<b>Alternative Names</b>	CSNK1A1; Casein kinase I isoform alpha; CKI-alpha; CK1
<b>Gene ID</b>	1452.0
<b>SwissProt ID</b>	P48729. The antiserum was produced against synthesized peptide derived from human Casein Kinase I alpha around the phosphorylation site of Tyr321. AA range: 287-336

## Application

<b>Dilution Ratio</b>	WB 1:500 - 1:2000. ELISA: 1:5000..
<b>Molecular Weight</b>	35kD

**Product Name: Casein Kinase I $\alpha$  (phospho Tyr321)  
Rabbit Polyclonal Antibody  
Catalog #: APRab04364**

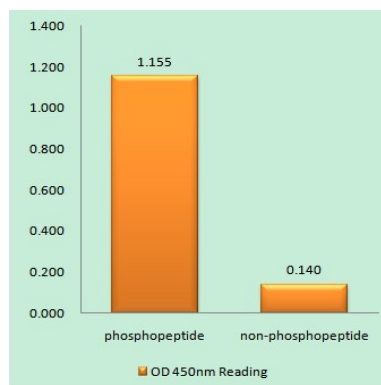
## Background

catalytic activity:ATP + a protein = ADP + a phosphoprotein.,function:Casein kinases are operationally defined by their preferential utilization of acidic proteins such as caseins as substrates. It can phosphorylate a large number of proteins. Participates in Wnt signaling. Phosphorylates CTNNB1 on 'Ser-45',similarity:Belongs to the protein kinase superfamily.,similarity:Belongs to the protein kinase superfamily. CK1 Ser/Thr protein kinase family. Casein kinase I subfamily.,similarity:Contains 1 protein kinase domain.,subunit:Monomer. Interacts with the Axin complex.,catalytic activity:ATP + a protein = ADP + a phosphoprotein.,function:Casein kinases are operationally defined by their preferential utilization of acidic proteins such as caseins as substrates. It can phosphorylate a large number of proteins. Participates in Wnt signaling. Phosphorylates CTNNB1 on 'Ser-45',similarity:Belongs to the protein kinase superfamily.,similarity:Belongs to the protein kinase superfamily. CK1 Ser/Thr protein kinase family. Casein kinase I subfamily.,similarity:Contains 1 protein kinase domain.,subunit:Monomer. Interacts with the Axin complex.,

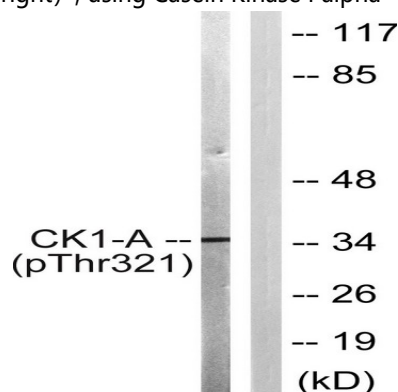
## Research Area

WNT;WNT-T CELLHedgehog;

## Image Data



Enzyme-Linked Immunosorbent Assay (Phospho-ELISA) for Immunogen Phosphopeptide (Phospho-left) and Non-Phosphopeptide (Phospho-right), using Casein Kinase I alpha (Phospho-Tyr321) Antibody

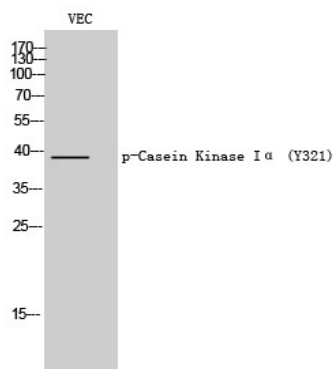


**Product Name: Casein Kinase I $\alpha$  (phospho Tyr321)  
Rabbit Polyclonal Antibody  
Catalog #: APRab04364**

---



Western blot analysis of lysates from HUVEC cells, using Casein Kinase I alpha (Phospho-Tyr321) Antibody. The lane on the right is blocked with the phospho peptide.



Western Blot analysis of VEC cells using Phospho-Casein Kinase I $\alpha$  (Y321) Polyclonal Antibody

## Note

For research use only.