

**Product Name: Casein Kinase II β (phospho Ser209)
Rabbit Polyclonal Antibody
Catalog #: APRab04362**

Summary

Production Name	Casein Kinase II β (phospho Ser209) Rabbit Polyclonal Antibody
Description	Rabbit Polyclonal Antibody
Host	Rabbit
Application	ELISA,IHC,WB,
Reactivity	Human,Mouse,Rat

Performance

Conjugation	Unconjugated
Modification	Phospho Antibody
Isotype	IgG
Clonality	Polyclonal
Form	Liquid
Storage	Store at 4°C short term. Aliquot and store at -20°C long term. Avoid freeze/thaw cycles.
Buffer	Liquid in PBS containing 50% glycerol, 0.5% BSA and 0.02% New type preservative N.
Purification	Affinity purification

Immunogen

Gene Name	CSNK2B
Alternative Names	CSNK2B; CK2N; G5A; Casein kinase II subunit beta; CK II beta; Phosvitin; Protein G5a
Gene ID	1460.0
SwissProt ID	P67870.The antiserum was produced against synthesized peptide derived from human CKII-beta around the phosphorylation site of Ser209. AA range:166-215

Application

Dilution Ratio	WB 1:500 - 1:2000 IHC 1:100 - 1:300. ELISA: 1:40000..
Molecular Weight	25kD

**Product Name: Casein Kinase II β (phospho Ser209)
Rabbit Polyclonal Antibody
Catalog #: APRab04362**



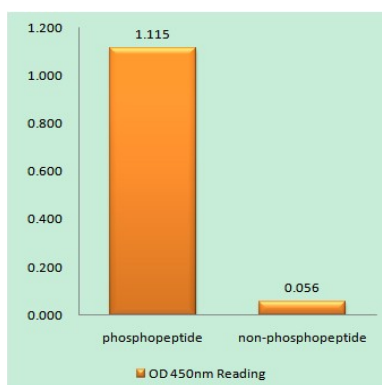
Background

This gene encodes the beta subunit of casein kinase II, a ubiquitous protein kinase which regulates metabolic pathways, signal transduction, transcription, translation, and replication. The enzyme is composed of three subunits, alpha, alpha prime and beta, which form a tetrameric holoenzyme. The alpha and alpha prime subunits are catalytic, while the beta subunit serves regulatory functions. The enzyme localizes to the endoplasmic reticulum and the Golgi apparatus. Two transcript variants encoding different isoforms have been found for this gene. [provided by RefSeq, Sep 2013],function:Participates in Wnt signaling (By similarity). Plays a complex role in regulating the basal catalytic activity of the alpha subunit.,PTM:N-glycosylated.,PTM:Phosphorylated by alpha subunit.,similarity:Belongs to the casein kinase 2 subunit beta family.,similarity:Contains 1 UPAR/Ly6 domain.,subunit:Forms oligomer.,subunit:Tetramer composed of an alpha subunit, an alpha' subunit and two beta subunits. Interacts with TCTEX1D3 (By similarity). Interacts with CD163. Also component of a CK2-SPT16-SSRP1 complex composed of SSRP1, SUPT16H, CSNK2A1, CSNK2A2 and CSNK2B, the complex associating following UV irradiation.,

Research Area

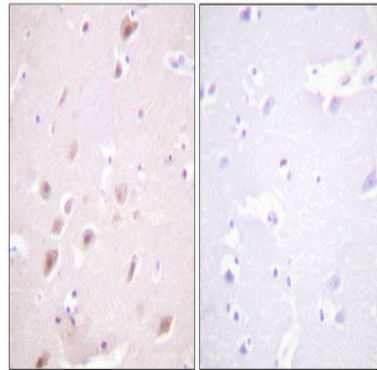
WNT;WNT-T CELLAdherens_Junction;Adherens_Junction;

Image Data

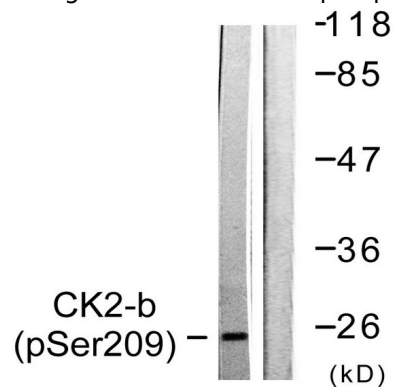


Enzyme-Linked Immunosorbent Assay (Phospho-ELISA) for Immunogen Phosphopeptide (Phospho-left) and Non-Phosphopeptide (Phospho-right) , using CKII-beta (Phospho-Ser209) Antibody

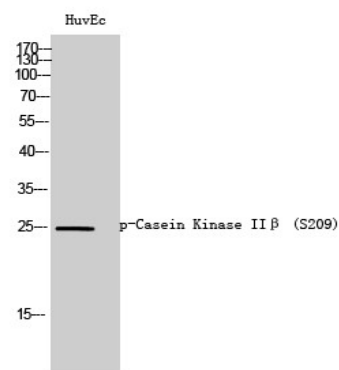
Product Name: Casein Kinase II β (phospho Ser209)
Rabbit Polyclonal Antibody
Catalog #: APRab04362



Immunohistochemistry analysis of paraffin-embedded human brain, using CKII-beta (Phospho-Ser209) Antibody. The picture on the right is blocked with the phospho peptide.



Western blot analysis of lysates from HUVEC cells, using CKII-beta (Phospho-Ser209) Antibody. The lane on the right is blocked with the phospho peptide.



Western Blot analysis of HuvEc cells using Phospho-Casein Kinase II β (S209) Polyclonal Antibody

Note

For research use only.