

Product Name: CaMKII α / δ (phospho Thr286) Rabbit Polyclonal Antibody
Catalog #: APRab04355



Summary

Production Name	CaMKII α / δ (phospho Thr286) Rabbit Polyclonal Antibody
Description	Rabbit Polyclonal Antibody
Host	Rabbit
Application	ELISA,IF,IHC,WB
Reactivity	Human,Mouse,Rat,Pig

Performance

Conjugation	Unconjugated
Modification	Phospho Antibody
Isotype	IgG
Clonality	Polyclonal
Form	Liquid
Storage	Store at 4°C short term. Aliquot and store at -20°C long term. Avoid freeze/thaw cycles.
Buffer	Liquid in PBS containing 50% glycerol, 0.5% BSA and 0.02% New type preservative N.
Purification	Affinity purification

Immunogen

Gene Name	CAMK2A/CAMK2D CAMK2A; CAMKA; KIAA0968; Calcium/calmodulin-dependent protein kinase type II subunit alpha; CaM kinase II subunit alpha; CaMK-II subunit alpha; CAMK2D; CAMKD; Calcium/calmodulin-dependent protein kinase type II subunit delta; CaM kinase II
Alternative Names	
Gene ID	815/817
SwissProt ID	Q9UQM7/Q13557.The antiserum was produced against synthesized peptide derived from human CaMK2 around the phosphorylation site of Thr286. AA range:256-305

Application

Dilution Ratio	WB 1:500 - 1:2000. IHC 1:100 - 1:300. IF 1:200 - 1:1000. ELISA: 1:10000. Not yet tested in
-----------------------	--

Product Name: CaMKII α / δ (phospho Thr286) Rabbit Polyclonal Antibody
Catalog #: AP Rab04355



other applications.

Molecular Weight 54kD

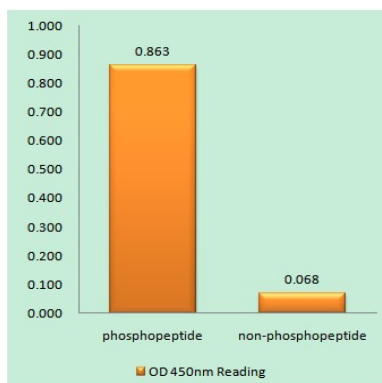
Background

The product of this gene belongs to the serine/threonine protein kinases family, and to the Ca(2+)/calmodulin-dependent protein kinases subfamily. Calcium signaling is crucial for several aspects of plasticity at glutamatergic synapses. This calcium calmodulin-dependent protein kinase is composed of four different chains: alpha, beta, gamma, and delta. The alpha chain encoded by this gene is required for hippocampal long-term potentiation (LTP) and spatial learning. In addition to its calcium-calmodulin (CaM)-dependent activity, this protein can undergo autophosphorylation, resulting in CaM-independent activity. Two transcript variants encoding distinct isoforms have been identified for this gene. [provided by RefSeq, Nov 2008],catalytic activity:ATP + a protein = ADP + a phosphoprotein.,enzyme regulation:Autophosphorylation of Thr-286 allows the kinase to switch from a calmodulin-dependent to a calmodulin-independent state.,function:CaM-kinase II (CAMK2) is a prominent kinase in the central nervous system that may function in long-term potentiation and neurotransmitter release. Member of the NMDAR signaling complex in excitatory synapses it may regulate NMDAR-dependent potentiation of the AMPAR and synaptic plasticity.,similarity:Belongs to the protein kinase superfamily.,similarity:Belongs to the protein kinase superfamily. CAMK Ser/Thr protein kinase family. CaMK subfamily.,similarity:Contains 1 protein kinase domain.,subcellular location:Postsynaptic lipid rafts.,subunit:CAMK2 is composed of four different chains: alpha, beta, gamma, and delta. The different isoforms assemble into homo- or heteromultimeric holoenzymes composed of 8 to 12 subunits. Interacts with BAALC, MPDZ, SYN1, CAMK2N2 and SYNGAP1.,

Research Area

ErbB_HER;Calcium;Oocyte meiosis;WNT;WNT-T CELLLong-term potentiation;Neurotrophin;Olfactory transduction;GnRH;Melanogenesis;Glioma;

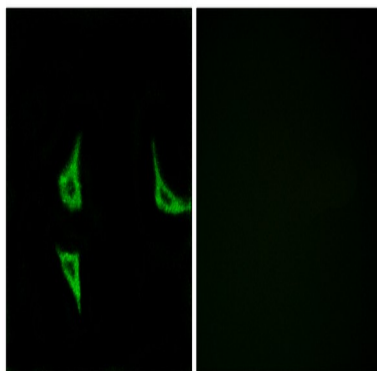
Image Data



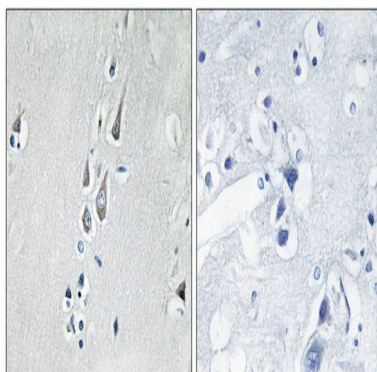
Product Name: CaMKII α/δ (phospho Thr286) Rabbit Polyclonal Antibody
Catalog #: APRab04355



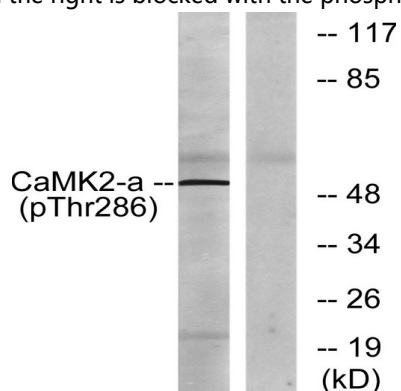
Enzyme-Linked Immunosorbent Assay (Phospho-ELISA) for Immunogen Phosphopeptide (Phospho-left) and Non-Phosphopeptide (Phospho-right) , using CaMK2 (Phospho-Thr286) Antibody



Immunofluorescence analysis of COS7 cells, using CaMK2 (Phospho-Thr286) Antibody. The picture on the right is blocked with the phospho peptide.

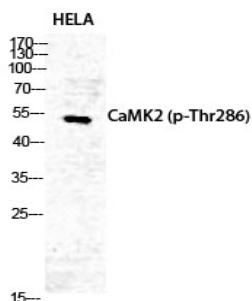


Immunohistochemistry analysis of paraffin-embedded human brain, using CaMK2 (Phospho-Thr286) Antibody. The picture on the right is blocked with the phospho peptide.



Western blot analysis of lysates from K562 cells, using CaMK2 (Phospho-Thr286) Antibody. The lane on the right is blocked with the phospho peptide.

**Product Name: CaMKII α / δ (phospho Thr286) Rabbit
Polyclonal Antibody
Catalog #: APRab04355**



Western Blot analysis of HELA cells using Phospho-CaMKII α / δ (T286) Polyclonal Antibody diluted at 1: 500

Note

For research use only.