

Product Name: Calnexin (phospho Ser583) Rabbit Polyclonal Antibody
Catalog #: APRab04353

Summary

Production Name	Calnexin (phospho Ser583) Rabbit Polyclonal Antibody
Description	Rabbit Polyclonal Antibody
Host	Rabbit
Application	ELISA,IF,IHC,WB
Reactivity	Human,Mouse,Rat

Performance

Conjugation	Unconjugated
Modification	Phospho Antibody
Isotype	IgG
Clonality	Polyclonal
Form	Liquid
Storage	Store at 4°C short term. Aliquot and store at -20°C long term. Avoid freeze/thaw cycles.
Buffer	Liquid in PBS containing 50% glycerol, 0.5% BSA and 0.02% New type preservative N.
Purification	Affinity purification

Immunogen

Gene Name	CANX
Alternative Names	CANX; Calnexin; IP90; Major histocompatibility complex class I antigen-binding protein p88; p90
Gene ID	821.0
SwissProt ID	P27824.The antiserum was produced against synthesized peptide derived from human Calnexin around the phosphorylation site of Ser583. AA range:543-592

Application

Dilution Ratio	WB 1:500 - 1:2000. IHC 1:100 - 1:300. IF 1:200 - 1:1000. ELISA: 1:5000. Not yet tested in other applications.
-----------------------	---

**Product Name: Calnexin (phospho Ser583) Rabbit
Polyclonal Antibody
Catalog #: AP Rab04353**



Molecular Weight 90kD

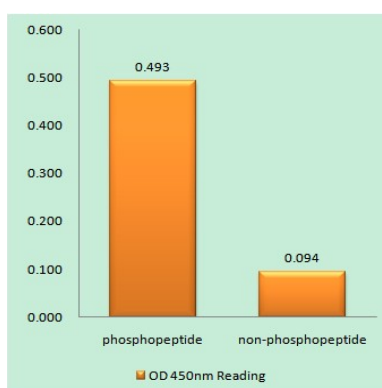
Background

This gene encodes a member of the calnexin family of molecular chaperones. The encoded protein is a calcium-binding, endoplasmic reticulum (ER)-associated protein that interacts transiently with newly synthesized N-linked glycoproteins, facilitating protein folding and assembly. It may also play a central role in the quality control of protein folding by retaining incorrectly folded protein subunits within the ER for degradation. Alternatively spliced transcript variants encoding the same protein have been described. [provided by RefSeq, Jul 2008],function:Calcium-binding protein that interacts with newly synthesized glycoproteins in the endoplasmic reticulum. It may act in assisting protein assembly and/or in the retention within the ER of unassembled protein subunits. It seems to play a major role in the quality control apparatus of the ER by the retention of incorrectly folded proteins.,online information:Calnexin entry,similarity:Belongs to the calreticulin family.,subcellular location:Identified by mass spectrometry in melanosome fractions from stage I to stage IV.,

Research Area

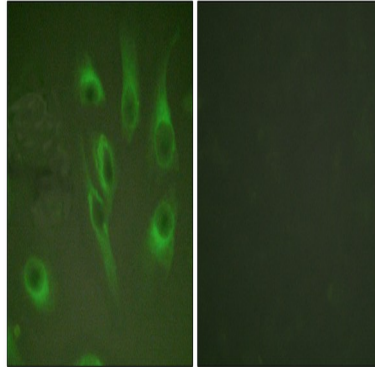
Antigen processing and presentation;

Image Data

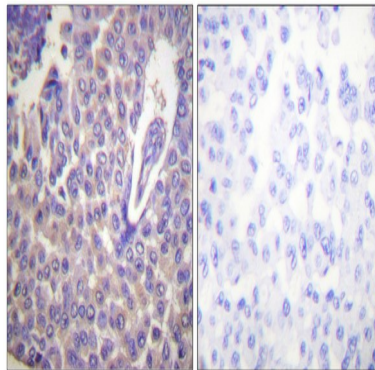


Enzyme-Linked Immunosorbent Assay (Phospho-ELISA) for Immunogen Phosphopeptide (Phospho-left) and Non-Phosphopeptide (Phospho-right) , using Calnexin (Phospho-Ser583) Antibody

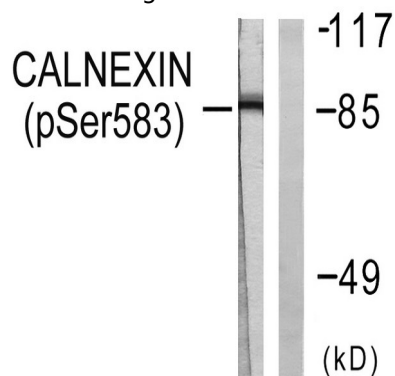
Product Name: Calnexin (phospho Ser583) Rabbit Polyclonal Antibody
Catalog #: APRab04353



Immunofluorescence analysis of HeLa cells, using Calnexin (Phospho-Ser583) Antibody. The picture on the right is blocked with the phospho peptide.

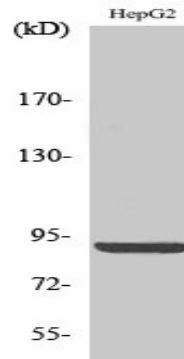


Immunohistochemistry analysis of paraffin-embedded human breast carcinoma, using Calnexin (Phospho-Ser583) Antibody. The picture on the right is blocked with the phospho peptide.



Western blot analysis of lysates from HeLa cells treated with EGF 200ng/ml 30 ', using Calnexin (Phospho-Ser583) Antibody. The lane on the right is blocked with the phospho peptide.

**Product Name: Calnexin (phospho Ser583) Rabbit
Polyclonal Antibody
Catalog #: APRab04353**



Western Blot analysis of various cells using Phospho-Calnexin (S583) Polyclonal Antibody diluted at 1: 2000

Note

For research use only.