

Product Name: Calmodulin (phospho Thr80/S82) Rabbit Polyclonal Antibody
Catalog #: APRab04352

Summary

Production Name	Calmodulin (phospho Thr80/S82) Rabbit Polyclonal Antibody
Description	Rabbit Polyclonal Antibody
Host	Rabbit
Application	ELISA,IF,IHC,WB
Reactivity	Human,Mouse,Rat

Performance

Conjugation	Unconjugated
Modification	Phospho Antibody
Isotype	IgG
Clonality	Polyclonal
Form	Liquid
Storage	Store at 4°C short term. Aliquot and store at -20°C long term. Avoid freeze/thaw cycles.
Buffer	Liquid in PBS containing 50% glycerol, 0.5% BSA and 0.02% New type preservative N.
Purification	Affinity purification

Immunogen

Gene Name	CALM1
Alternative Names	CALM1; CALM; CAM; CAM1; CALM2; CAM2; CAMB; CALM3; CALML2; CAM3; CAMC; CAMIII; Calmodulin; CaM
Gene ID	801/805/808
SwissProt ID	P62158.The antiserum was produced against synthesized peptide derived from human Calmodulin around the phosphorylation site of Thr79 and Ser81. AA range:46-95

Application

Dilution Ratio	WB 1:500 - 1:2000. IHC 1:100 - 1:300. IF 1:200 - 1:1000. ELISA: 1:5000. Not yet tested in other applications.
-----------------------	---

Product Name: Calmodulin (phospho Thr80/S82) Rabbit Polyclonal Antibody
Catalog #: APRab04352



Molecular Weight

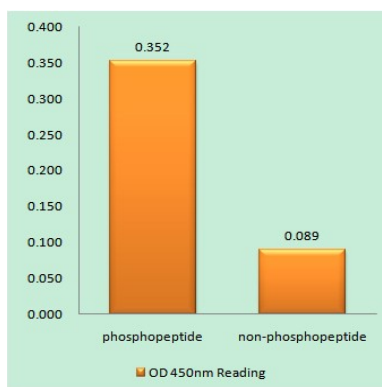
Background

This gene encodes a member of the EF-hand calcium-binding protein family. It is one of three genes which encode an identical calcium binding protein which is one of the four subunits of phosphorylase kinase. Two pseudogenes have been identified on chromosome 7 and X. Multiple transcript variants encoding different isoforms have been found for this gene. [provided by RefSeq, Oct 2009],function:Calmodulin mediates the control of a large number of enzymes and other proteins by Ca(2+). Among the enzymes to be stimulated by the calmodulin-Ca(2+) complex are a number of protein kinases and phosphatases. Together with CEP110 and centrin, is involved in a genetic pathway that regulates the centrosome cycle and progression through cytokinesis.,miscellaneous:This protein has four functional calcium-binding sites.,PTM:Phosphorylation results in a decreased activity.,PTM:Ubiquitination results in a strongly decreased activity.,similarity:Belongs to the calmodulin family.,similarity:Contains 4 EF-hand domains.,subcellular location:Distributed throughout the cell during interphase, but during mitosis becomes dramatically localized to the spindle poles and the spindle microtubules.,subunit:Interacts with MYO1C (By similarity). Interacts with CEP97, CEP110, TTN/titin and SRY.,

Research Area

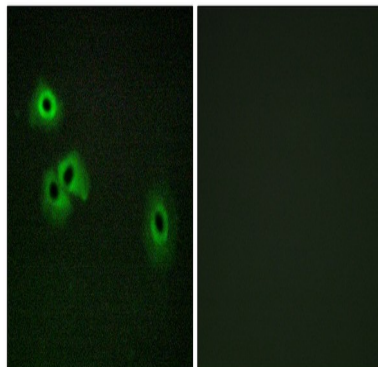
Calcium;Phosphatidylinositol signaling system;Oocyte meiosis;Vascular smooth muscle contraction;Long-term potentiation;Neurotrophin;Olfactory transduction;Insulin_Receptor;GnRH;Melanogenesis;Alzheimer's disease;Glioma;

Image Data

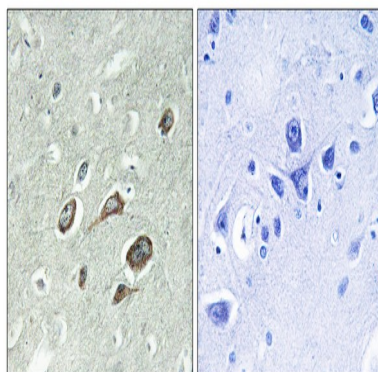


Enzyme-Linked Immunosorbent Assay (Phospho-ELISA) for Immunogen Phosphopeptide (Phospho-left) and Non-Phosphopeptide (Phospho-right) , using Calmodulin (Phospho-Thr79+Ser81) Antibody

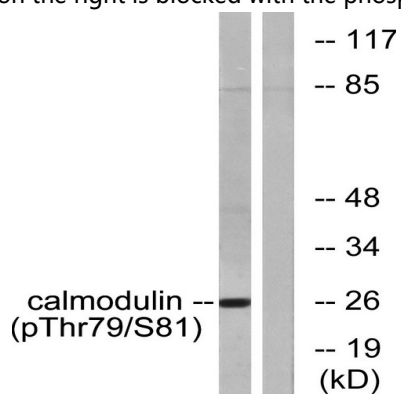
Product Name: Calmodulin (phospho Thr80/S82) Rabbit
Polyclonal Antibody
Catalog #: APRab04352



Immunofluorescence analysis of HepG2 cells, using Calmodulin (Phospho-Thr79+Ser81) Antibody. The picture on the right is blocked with the phospho peptide.

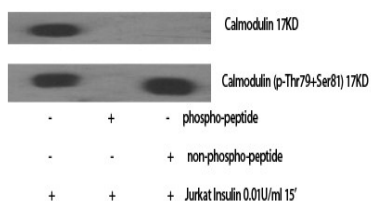


Immunohistochemistry analysis of paraffin-embedded human brain, using Calmodulin (Phospho-Thr79+Ser81) Antibody. The picture on the right is blocked with the phospho peptide.



Western blot analysis of lysates from Jurkat cells treated with Insulin 0.01U/ml 15 ', using Calmodulin (Phospho-Thr79+Ser81) Antibody. The lane on the right is blocked with the phospho peptide.

**Product Name: Calmodulin (phospho Thr80/S82) Rabbit
Polyclonal Antibody**
Catalog #: APRab04352



Western Blot analysis of various cells using Phospho-Calmodulin (T80/S82) Polyclonal Antibody

Note

For research use only.