

Product Name: C/EBP ϵ (phospho Thr74) Rabbit Polyclonal Antibody
Catalog #: APRab04342

Summary

Production Name	C/EBP ϵ (phospho Thr74) Rabbit Polyclonal Antibody
Description	Rabbit Polyclonal Antibody
Host	Rabbit
Application	ELISA,IF,IHC,WB
Reactivity	Human,Rat,Mouse

Performance

Conjugation	Unconjugated
Modification	Phospho Antibody
Isotype	IgG
Clonality	Polyclonal
Form	Liquid
Storage	Store at 4°C short term. Aliquot and store at -20°C long term. Avoid freeze/thaw cycles.
Buffer	Liquid in PBS containing 50% glycerol, 0.5% BSA and 0.02% New type preservative N.
Purification	Affinity purification

Immunogen

Gene Name	CEBPE
Alternative Names	CEBPE; CCAAT/enhancer-binding protein epsilon; C/EBP epsilon
Gene ID	1053.0
SwissProt ID	Q15744.The antiserum was produced against synthesized peptide derived from human C/EBP-epsilon around the phosphorylation site of Thr74. AA range:40-89

Application

Dilution Ratio	WB 1:500 - 1:2000. IF 1:200 - 1:1000. ELISA: 1:20000. IHC 1:100 - 1:300.
Molecular Weight	34kD

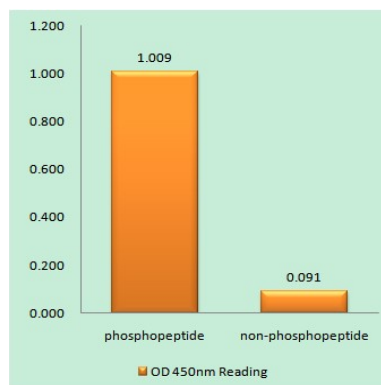
Product Name: C/EBP ϵ (phospho Thr74) Rabbit Polyclonal Antibody
Catalog #: APRab04342

Background

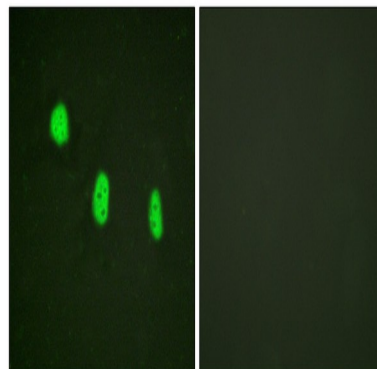
The protein encoded by this gene is a bZIP transcription factor which can bind as a homodimer to certain DNA regulatory regions. It can also form heterodimers with the related protein CEBP-delta. The encoded protein may be essential for terminal differentiation and functional maturation of committed granulocyte progenitor cells. Mutations in this gene have been associated with Specific Granule Deficiency, a rare congenital disorder. Multiple variants of this gene have been described, but the full-length nature of only one has been determined. [provided by RefSeq, Jul 2008],function:C/EBP are DNA-binding proteins that recognize two different motifs: the CCAAT homology common to many promoters and the enhanced core homology common to many enhancers.,online information:CEBPE mutation db,PTM:Phosphorylated.,similarity:Belongs to the bZIP family. C/EBP subfamily.,similarity:Contains 1 bZIP domain.,subunit:Binds DNA as a dimer and can form stable heterodimers with C/EBP delta.,tissue specificity:Strongest expression occurs in promyelocyte and late-myeloblast-like cell lines.,

Research Area

Image Data

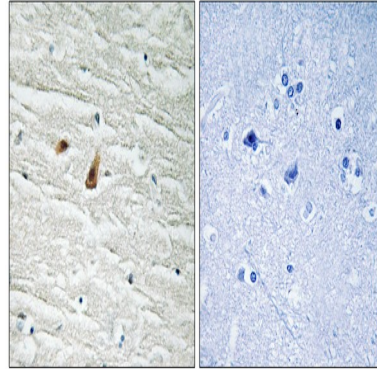


Enzyme-Linked Immunosorbent Assay (Phospho-ELISA) for Immunogen Phosphopeptide (Phospho-left) and Non-Phosphopeptide (Phospho-right), using C/EBP-epsilon (Phospho-Thr74) Antibody

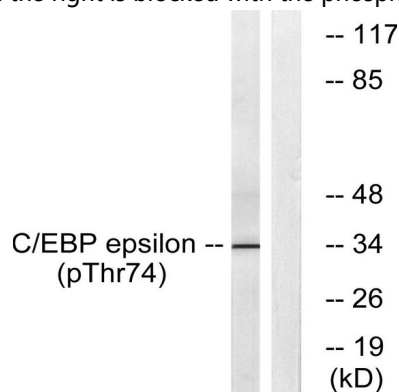


Product Name: C/EBP ϵ (phospho Thr74) Rabbit Polyclonal Antibody
Catalog #: APRab04342

Immunofluorescence analysis of HeLa cells, using C/EBP-epsilon (Phospho-Thr74) Antibody. The picture on the right is blocked with the phospho peptide.



Immunohistochemistry analysis of paraffin-embedded human brain, using C/EBP-epsilon (Phospho-Thr74) Antibody. The picture on the right is blocked with the phospho peptide.



Western blot analysis of lysates from HUVEC cells treated with UV 15', using C/EBP-epsilon (Phospho-Thr74) Antibody. The lane on the right is blocked with the phospho peptide.

Note

For research use only.