

Product Name: Bcl-2 (phospho Ser70) Rabbit Polyclonal Antibody
Catalog #: APRab04304

Summary

Production Name	Bcl-2 (phospho Ser70) Rabbit Polyclonal Antibody
Description	Rabbit Polyclonal Antibody
Host	Rabbit
Application	WB,ELISA
Reactivity	Mouse,Rat

Performance

Conjugation	Unconjugated
Modification	Phospho Antibody
Isotype	IgG
Clonality	Polyclonal
Form	Liquid
Storage	Store at 4°C short term. Aliquot and store at -20°C long term. Avoid freeze/thaw cycles.
Buffer	Liquid in PBS containing 50% glycerol, 0.5% BSA and 0.02% New type preservative N.
Purification	Affinity purification

Immunogen

Gene Name	BCL2
Alternative Names	BCL2; Apoptosis regulator Bcl-2
Gene ID	24224.0
SwissProt ID	P49950.The antiserum was produced against synthesized peptide derived from human BCL2 around the phosphorylation site of Ser70. AA range:36-85

Application

Dilution Ratio	WB 1:500 - 1:2000. ELISA: 1:40000. Not yet tested in other applications.
Molecular Weight	26kD

Product Name: Bcl-2 (phospho Ser70) Rabbit Polyclonal Antibody
Catalog #: APRab04304

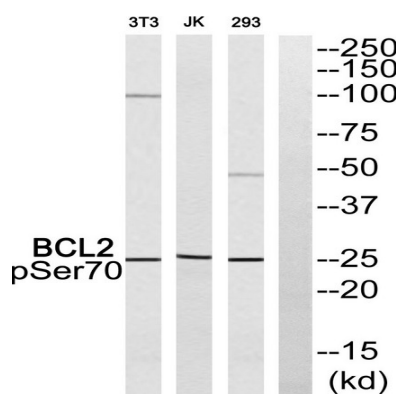
Background

BCL2 encodes an integral outer mitochondrial membrane protein that blocks the apoptotic death of some cells such as lymphocytes. Constitutive expression of BCL2, such as in the case of translocation of BCL2 to Ig heavy chain locus, is thought to be the cause of follicular lymphoma. Alternative splicing results in multiple transcript variants.

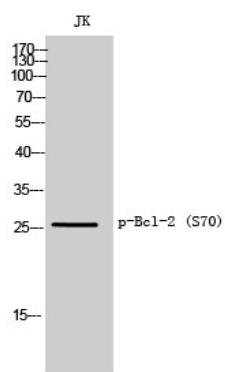
Research Area

Stem cell pathway; PI3K/Akt; NF_kappaB

Image Data

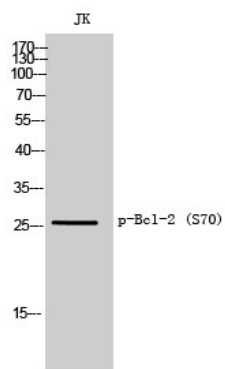


Western blot analysis of BCL2 (Phospho-Ser70) Antibody. The lane on the right is blocked with the BCL2 (Phospho-Ser70) peptide.



Western Blot analysis of JK cells using Phospho-Bcl-2 (S70) Polyclonal Antibody

Product Name: Bcl-2 (phospho Ser70) Rabbit Polyclonal Antibody
Catalog #: AP Rab04304



Western Blot analysis of Jurkat cells using Phospho-Bcl-2 (S70) Polyclonal Antibody

Note

For research use only.