

**Product Name: ATRIP (phospho Ser224) Rabbit Polyclonal Antibody**  
**Catalog #: APRab04287**

---

## Summary

<b>Production Name</b>	ATRIP (phospho Ser224) Rabbit Polyclonal Antibody
<b>Description</b>	Rabbit Polyclonal Antibody
<b>Host</b>	Rabbit
<b>Application</b>	WB,IHC,ELISA
<b>Reactivity</b>	Human,Rat,Mouse

## Performance

<b>Conjugation</b>	Unconjugated
<b>Modification</b>	Phospho Antibody
<b>Isotype</b>	IgG
<b>Clonality</b>	Polyclonal
<b>Form</b>	Liquid
<b>Storage</b>	Store at 4°C short term. Aliquot and store at -20°C long term. Avoid freeze/thaw cycles.
<b>Buffer</b>	Liquid in PBS containing 50% glycerol, 0.5% BSA and 0.02% New type preservative N.
<b>Purification</b>	Affinity purification

## Immunogen

<b>Gene Name</b>	ATRIP
<b>Alternative Names</b>	ATRIP; AGS1; ATR-interacting protein; ATM and Rad3-related-interacting protein
<b>Gene ID</b>	84126.0
<b>SwissProt ID</b>	Q8WXE1.The antiserum was produced against synthesized peptide derived from human ATRIP around the phosphorylation site of Ser224. AA range:190-239

## Application

<b>Dilution Ratio</b>	WB 1:500 - 1:2000. IHC 1:100 - 1:300. ELISA: 1:10000..
<b>Molecular Weight</b>	86kD

**Product Name: ATRIP (phospho Ser224) Rabbit Polyclonal Antibody**  
**Catalog #: APRab04287**

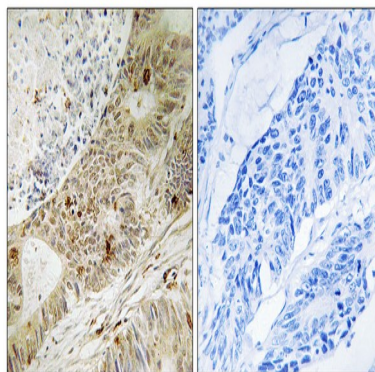
---

## Background

This gene encodes an essential component of the DNA damage checkpoint. The encoded protein binds to single-stranded DNA coated with replication protein A. The protein also interacts with the ataxia telangiectasia and Rad3 related protein kinase, resulting in its accumulation at intranuclear foci induced by DNA damage. Multiple transcript variants encoding different isoforms have been found for this gene. [provided by RefSeq, Aug 2012],caution:The gene for this protein is either identical to or adjacent to that of TREX1. Some of the mRNAs that encode ATRIP also encode TREX1 in another reading frame.,domain:The EEXXXDDL motif is required for the interaction with catalytic subunit PRKDC and its recruitment to sites of DNA damage.,function:Required for checkpoint signaling after DNA damage. Required for ATR expression, possibly by stabilizing the protein.,PTM:Phosphorylated by ATR.,sequence caution:Translation N-terminally extended.,similarity:Belongs to the ATRIP family.,subcellular location:Redistributes to discrete nuclear foci upon DNA damage.,subunit:Heterodimer with ATR. The heterodimer binds the RPA complex and is then recruited to single stranded DNA. Interacts with CEP164 (via N-terminus),tissue specificity:Ubiquitous.,

## Research Area

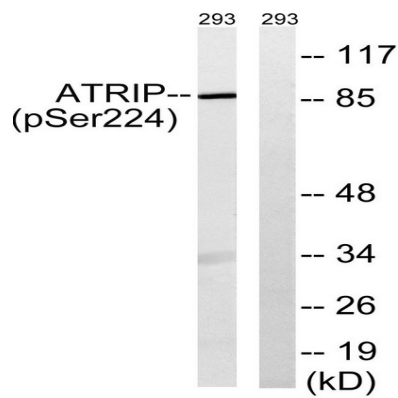
## Image Data



Immunohistochemistry analysis of paraffin-embedded human colon carcinoma, using ATRIP (Phospho-Ser224) Antibody.  
The picture on the right is blocked with the phospho peptide.

**Product Name: ATRIP (phospho Ser224) Rabbit  
Polyclonal Antibody  
Catalog #: APRab04287**

---



Western blot analysis of lysates from 293 cells treated with UV 15', using ATRIP (Phospho-Ser224) Antibody. The lane on the right is blocked with the phospho peptide.

### Note

For research use only.