

Product Name: A-Raf (phospho Tyr302) Rabbit Polyclonal Antibody
Catalog #: APRab04255

Summary

Production Name	A-Raf (phospho Tyr302) Rabbit Polyclonal Antibody
Description	Rabbit Polyclonal Antibody
Host	Rabbit
Application	ELISA,IF,IHC,WB
Reactivity	Human,Mouse,Rat

Performance

Conjugation	Unconjugated
Modification	Phospho Antibody
Isotype	IgG
Clonality	Polyclonal
Form	Liquid
Storage	Store at 4°C short term. Aliquot and store at -20°C long term. Avoid freeze/thaw cycles.
Buffer	Liquid in PBS containing 50% glycerol, 0.5% BSA and 0.02% New type preservative N.
Purification	Affinity purification

Immunogen

Gene Name	ARAF
Alternative Names	ARAF; ARAF1; PKS; PKS2; Serine/threonine-protein kinase A-Raf; Proto-oncogene A-Raf; Proto-oncogene A-Raf-1; Proto-oncogene Pks
Gene ID	369.0
SwissProt ID	P10398.The antiserum was produced against synthesized peptide derived from human A-RAF around the phosphorylation site of Tyr302. AA range:276-325

Application

Dilution Ratio	WB 1:500 - 1:2000. IF 1:200 - 1:1000. ELISA: 1:20000. IHC 1:100 - 1:300.
Molecular Weight	68kD

Product Name: A-Raf (phospho Tyr302) Rabbit Polyclonal Antibody
Catalog #: APRab04255

Background

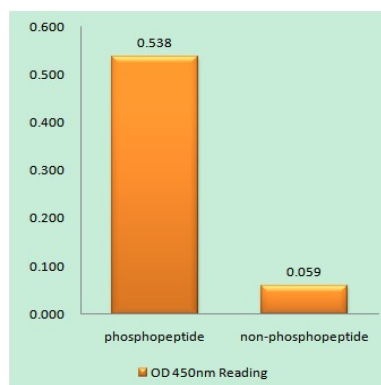
This proto-oncogene belongs to the RAF subfamily of the Ser/Thr protein kinase family, and maybe involved in cell growth and development. Alternatively spliced transcript variants encoding different isoforms have been found for this gene.

[provided by RefSeq, Jan 2012],catalytic activity:ATP + a protein = ADP + a phosphoprotein.,cofactor:Binds 2 zinc ions per subunit.,function:Involved in the transduction of mitogenic signals from the cell membrane to the nucleus.,similarity:Belongs to the protein kinase superfamily.,similarity:Belongs to the protein kinase superfamily. TKL Ser/Thr protein kinase family. RAF subfamily.,similarity:Contains 1 phorbol-ester/DAG-type zinc finger.,similarity:Contains 1 protein kinase domain.,similarity:Contains 1 RBD (Ras-binding) domain.,subunit:Interacts with TH1L/NELFD.,tissue specificity:Predominantly in urogenital tissues.,

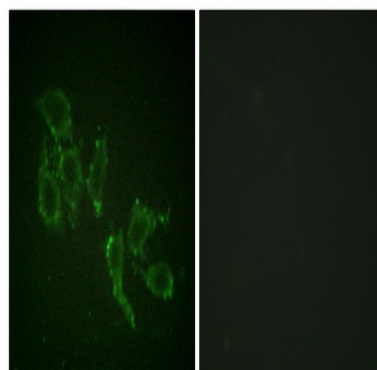
Research Area

Regulation of Actin Dynamics; ErbB/HER; Cell Growth

Image Data



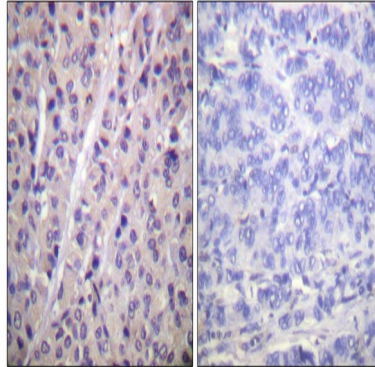
Enzyme-Linked Immunosorbent Assay (Phospho-ELISA) for Immunogen Phosphopeptide (Phospho-left) and Non-Phosphopeptide (Phospho-right), using A-RAF (Phospho-Tyr302) Antibody



Immunofluorescence analysis of HepG2 cells, using A-RAF (Phospho-Tyr302) Antibody. The picture on the right is blocked

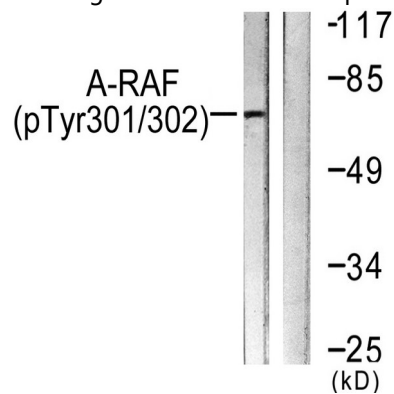
Product Name: A-Raf (phospho Tyr302) Rabbit Polyclonal Antibody
Catalog #: APRab04255

with the phospho peptide.



Immunohistochemistry analysis of paraffin-embedded human breast carcinoma, using A-RAF (Phospho-Tyr302) Antibody.

The picture on the right is blocked with the phospho peptide.



Western blot analysis of lysates from HeLa cells treated with PMA 125ng/ml 30', using A-RAF (Phospho-Tyr302)

Antibody. The lane on the right is blocked with the phospho peptide.

Note

For research use only.