

Product Name: AP-1 (phospho Thr91) Rabbit Polyclonal Antibody
Catalog #: APRab04238

Summary

Production Name	AP-1 (phospho Thr91) Rabbit Polyclonal Antibody
Description	Rabbit Polyclonal Antibody
Host	Rabbit
Application	WB,IHC,ELISA
Reactivity	Human,Mouse,Rat

Performance

Conjugation	Unconjugated
Modification	Phospho Antibody
Isotype	IgG
Clonality	Polyclonal
Form	Liquid
Storage	Store at 4°C short term. Aliquot and store at -20°C long term. Avoid freeze/thaw cycles.
Buffer	Liquid in PBS containing 50% glycerol, 0.5% BSA and 0.02% New type preservative N.
Purification	Affinity purification

Immunogen

Gene Name	JUN
Alternative Names	JUN; Transcription factor AP-1; Activator protein 1; AP1; Proto-oncogene c-Jun; V-jun avian sarcoma virus 17 oncogene homolog; p39
Gene ID	3725.0
SwissProt ID	P05412.The antiserum was produced against synthesized peptide derived from human c-Jun around the phosphorylation site of Thr91. AA range:58-107

Application

Dilution Ratio	WB 1:500 - 1:2000. IHC 1:100 - 1:300. ELISA: 1:20000..
Molecular Weight	39-42kD

Product Name: AP-1 (phospho Thr91) Rabbit Polyclonal Antibody
Catalog #: APRab04238

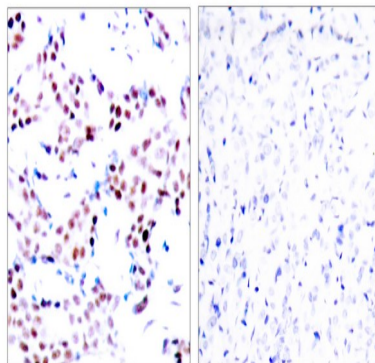
Background

This gene is the putative transforming gene of avian sarcoma virus 17. It encodes a protein which is highly similar to the viral protein, and which interacts directly with specific target DNA sequences to regulate gene expression. This gene is intronless and is mapped to 1p32-p31, a chromosomal region involved in both translocations and deletions in human malignancies. [provided by RefSeq, Jul 2008],function:Transcription factor that recognizes and binds to the enhancer heptamer motif 5'-TGA[CG]TCA-3',PTM:Phosphorylation enhances the transcriptional activity. Phosphorylated by PRKDC.,similarity:Belongs to the bZIP family.,similarity:Belongs to the bZIP family. Jun subfamily.,similarity:Contains 1 bZIP domain.,subunit:Heterodimer with either FOS or BATF3. Interacts with HIVP3 (By similarity). Interacts with SMAD3/SMAD4 heterodimers. Interacts with MYBBP1A, SPIB and TCF20. Interacts with COPS5; indirectly leading to its phosphorylation. Interacts with DSIPI; this interaction inhibits the binding of active AP1 to its target DNA.,

Research Area

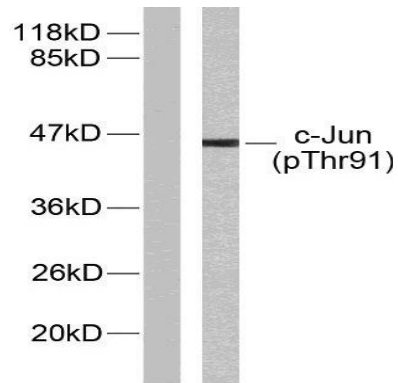
MAPK_ERK_Growth;MAPK_G_Protein;ErbB_HER;WNT;WNT-T CELLFocal adhesion;Toll_Like;T_Cell_Receptor;B_Cell_Antigen;Neurotrophin;GnRH;Epithelial cell signaling in Helicobacter pylori infection;Pathways in cancer;Colorectal cancer;Renal cell carcinoma;

Image Data



Immunohistochemistry analysis of paraffin-embedded human breast carcinoma, using c-Jun (Phospho-Thr91) Antibody.
The picture on the right is blocked with the phospho peptide.

Product Name: AP-1 (phospho Thr91) Rabbit Polyclonal Antibody
Catalog #: APRab04238



Western blot analysis of lysates from HeLa cells treated with UV, using c-Jun (Phospho-Thr91) Antibody. The lane on the left is blocked with the phospho peptide.

Note

For research use only.