

## Summary

<b>Production Name</b>	LC3A/B Rabbit Polyclonal Antibody
<b>Description</b>	Primary antibody
<b>Host</b>	Rabbit
<b>Application</b>	WB
<b>Reactivity</b>	Human,Mouse,Rat

## Performance

<b>Conjugation</b>	Unconjugated
<b>Modification</b>	Unmodified
<b>Isotype</b>	IgG
<b>Clonality</b>	Polyclonal Antibody
<b>Form</b>	Liquid
<b>Storage</b>	Store at 4°C short term. Aliquot and store at -20°C long term. Avoid freeze/thaw cycles.
<b>Buffer</b>	Liquid in PBS containing 50% glycerol, 0.5% BSA and 0.02% sodium azide, pH 7.3.
<b>Purification</b>	Affinity Purified

## Immunogen

<b>Gene Name</b>	MAP1LC3A/MAP1LC3B
<b>Alternative Names</b>	LC3; LC3A; ATG8E; MAP1ALC3; MAP1BLC3; MAP1LC3A; LC3B; ATG8F; MAP1LC3B-a; MAP1A/1BLC3; MAP1LC3B
<b>Gene ID</b>	84557/81631
<b>SwissProt ID</b>	Q9H492/Q9GZQ8

## Application

<b>Dilution Ratio</b>	WB: 1/500-1/1000
<b>Molecular Weight</b>	Calculated MW: 14 kDa; Observed MW: 14,16 kDa

## Background

---

**Product Name: LC3A/B Rabbit Polyclonal Antibody**  
**Catalog #: APRab03870**

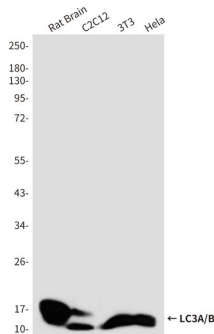


Macroautophagy is the major inducible pathway for the general turnover of cytoplasmic constituents in eukaryotic cells, it is also responsible for the degradation of active cytoplasmic enzymes and organelles during nutrient starvation. Macroautophagy involves the formation of double-membrane bound autophagosomes which enclose the cytoplasmic constituent targeted for degradation in a membrane bound structure, which then fuse with the lysosome (or vacuole) releasing a single-membrane bound autophagic bodies which are then degraded within the lysosome (or vacuole). MAP1A and MAP1B are microtubule-associated proteins which mediate the physical interactions between microtubules and components of the cytoskeleton. These proteins are involved in formation of autophagosomal vacuoles (autophagosomes). MAP1A and MAP1B each consist of a heavy chain subunit and multiple light chain subunits. MAP1LC3a is one of the light chain subunits and can associate with either MAP1A or MAP1B. The precursor molecule is cleaved by APG4B/ATG4B to form the cytosolic form, LC3-I. This is activated by APG7L/ATG7, transferred to ATG3 and conjugated to phospholipid to form the membrane-bound form, LC3-II.

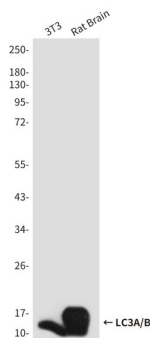
## Research Area

Signal Transduction

## Image Data



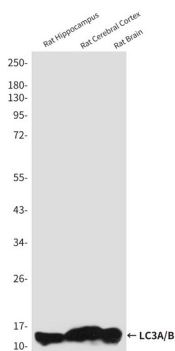
Western blot analysis of LC3A/B in rat Brain, C2C12, 3T3 and Hela lysates using LC3A/B antibody.



Western blot analysis of LC3A/B in 3T3 and rat Brain lysates using LC3A/B antibody.

**Product Name: LC3A/B Rabbit Polyclonal Antibody**  
**Catalog #: APRab03870**

---



Western blot analysis of LC3A/B in rat Hippocampus, rat Cerebral Cortex and rat Brain lysates using LC3A/B antibody.

### **Note**

For research use only.