

**Product Name: Phospho-PKC alpha (Thr638) Rabbit Polyclonal Antibody**  
**Catalog #: APRab03728**

---



## Summary

<b>Production Name</b>	Phospho-PKC alpha (Thr638) Rabbit Polyclonal Antibody
<b>Description</b>	Primary antibody
<b>Host</b>	Rabbit
<b>Application</b>	WB,IHC-P,ICC/IF,IP
<b>Reactivity</b>	Human,Mouse,Rat

## Performance

<b>Conjugation</b>	Unconjugated
<b>Modification</b>	Phosphorylated
<b>Isotype</b>	IgG
<b>Clonality</b>	Polyclonal Antibody
<b>Form</b>	Liquid
<b>Storage</b>	Store at 4°C short term. Aliquot and store at -20°C long term. Avoid freeze/thaw cycles.
<b>Buffer</b>	Rabbit IgG in phosphate buffered saline , pH 7.4, 150mM NaCl, 0.02% sodium azide and 50% glycerol.
<b>Purification</b>	Affinity Chromatography

## Immunogen

<b>Gene Name</b>	PRKCA
<b>Alternative Names</b>	PRKCA; PKCA; PRKACA; Protein kinase C alpha type; PKC-A; PKC-alpha
<b>Gene ID</b>	5578
<b>SwissProt ID</b>	P17252

## Application

<b>Dilution Ratio</b>	WB: 1/500-1/1000 IHC: 1/50-1/100 IF: 1/50-1/200 IP: 1/20
<b>Molecular Weight</b>	Calculated MW: 77 kDa; Observed MW: 80 kDa

**Product Name: Phospho-PKC alpha (Thr638) Rabbit Polyclonal Antibody**  
**Catalog #: APRab03728**

---



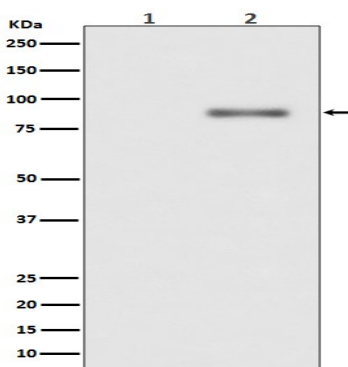
## Background

PKC alpha is an AGC kinase of the PKC family. A classical PKC downstream of many mitogenic and receptors. Classical PKCs are calcium-dependent enzymes that are activated by phosphatidylserine, diacylglycerol and phorbol esters.

## Research Area

Signal Transduction

## Image Data



Western blot analysis of Phospho-PKC alpha (T638) in (1) Jurkat lysates treated with TPA; (2) Jurkat lysates using Phospho-PKC alpha (Thr638) antibody.

## Note

For research use only.