

Product Name: 14-3-3 Rabbit Polyclonal Antibody
Catalog #: APRab03629



Summary

Production Name	14-3-3 Rabbit Polyclonal Antibody
Description	Primary antibody
Host	Rabbit
Application	WB
Reactivity	Human,Mouse,Rat

Performance

Conjugation	Unconjugated
Modification	Unmodified
Isotype	IgG
Clonality	Polyclonal Antibody
Form	Liquid
Storage	Store at 4°C short term. Aliquot and store at -20°C long term. Avoid freeze/thaw cycles.
Buffer	Liquid in PBS containing 50% glycerol, 0.5% BSA and 0.02% sodium azide, pH 7.3.
Purification	Affinity Purified

Immunogen

Gene Name	YWHAB/YWHAE/YWHAH 14-3-3; 14 3 3; 14 3 3 protein beta; 14 3 3 protein beta/alpha; 14 3 3 protein zeta; 14 3 3 zeta; 14-3-3 protein beta/alpha; 14-3-3 protein/cytosolic phospholipase A2; 1433B_HUMAN; GW128; HS1; KCIP 1; KCIP-1; MGC111427; MGC126532; MGC138156;
Alternative Names	N-terminally processed; Protein 1054; Protein kinase C inhibitor protein 1; Tyrosine 3-monooxygenase/tryptophan 5-monooxygenase activation protein; delta polypeptide; Tyrosine 3/tryptophan 5 -monooxygenase activation protein; zeta polypeptide; YWHAB; YWHAD; YWHAZ.
Gene ID	7529/7531/7533/7532/2810/10971/7534
SwissProt ID	P31946/P62258/Q04917/P61981/P31947/P27348/P63104

Application

Product Name: 14-3-3 Rabbit Polyclonal Antibody
Catalog #: APRab03629



Dilution Ratio

WB: 1/500-1/1000

Molecular Weight

Calculated MW: 27-29 kDa; Observed MW: 27-29 kDa

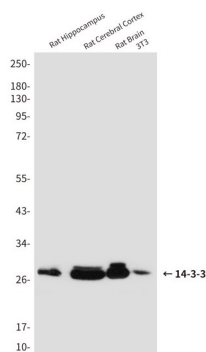
Background

Adapter protein implicated in the regulation of a large spectrum of both general and specialized signaling pathways. Binds to a large number of partners, usually by recognition of a phosphoserine or phosphothreonine motif. Binding generally results in the modulation of the activity of the binding partner. Negative regulator of osteogenesis.

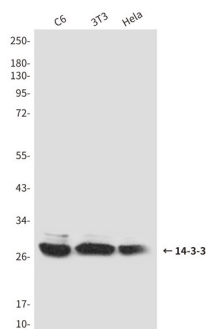
Research Area

Neuroscience

Image Data



Western blot analysis of 14-3-3 (pan) in rat Hippocampus, rat Cerebral Cortex and rat Brain lysates using 14-3-3 (pan) antibody.



Western blot analysis of 14-3-3 in C6, 3T3 and Hela lysates using 14-3-3 (pan) antibody.

Note

For research use only.

Product Name: 14-3-3 Rabbit Polyclonal Antibody
Catalog #: APRab03629

