

Product Name: IL-1 beta Rabbit Polyclonal Antibody
Catalog #: APRab03408



Summary

Production Name	IL-1 beta Rabbit Polyclonal Antibody
Description	Primary antibody
Host	Rabbit
Application	WB,IHC-P,ICC/IF
Reactivity	Human,Mouse,Rat

Performance

Conjugation	Unconjugated
Modification	Unmodified
Isotype	IgG
Clonality	Polyclonal Antibody
Form	Liquid
Storage	Store at 4°C short term. Aliquot and store at -20°C long term. Avoid freeze/thaw cycles.
Buffer	Liquid in PBS containing 50% glycerol, 0.5% BSA and 0.02% sodium azide, pH 7.3.
Purification	Affinity Purified

Immunogen

Gene Name	IL1B
Alternative Names	IL1B; IL1F2; Interleukin-1 beta; IL-1 beta; Catabolin
Gene ID	3553
SwissProt ID	P01584

Application

Dilution Ratio	WB: 1/500-1/1000 IHC: 1/50-1/100 IF: 1/50-1/200
Molecular Weight	Calculated MW: 31 kDa; Observed MW: 17,31 kDa

Background

Produced by activated macrophages, IL-1 stimulates thymocyte proliferation by inducing IL-2 release, B-cell maturation and

Product Name: IL-1 beta Rabbit Polyclonal Antibody
Catalog #: APRab03408

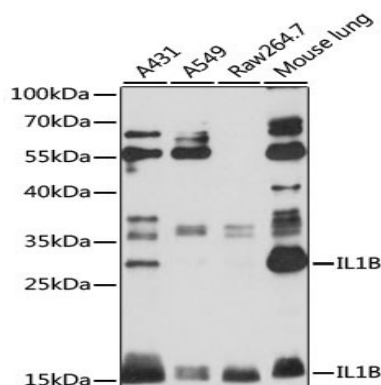


proliferation, and fibroblast growth factor activity. IL-1 proteins are involved in the inflammatory response, being identified as endogenous pyrogens, and are reported to stimulate the release of prostaglandin and collagenase from synovial cells.

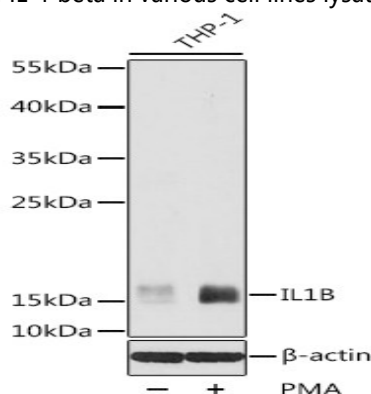
Research Area

Immunology

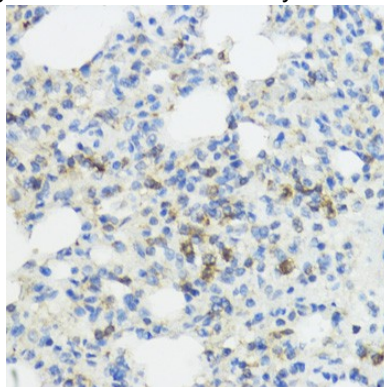
Image Data



Western blot analysis of IL-1 beta in various cell lines lysates using IL-1B antibody.

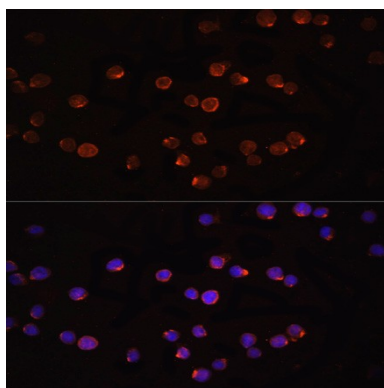


Western blot analysis of IL-1 beta in THP-1 lysates using IL-1B antibody.

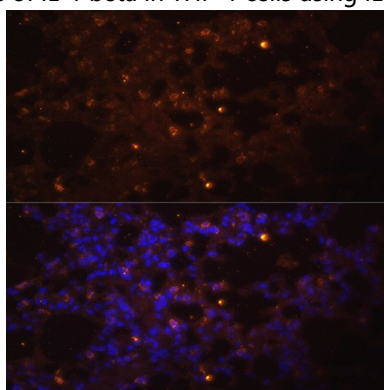


Immunohistochemistry analysis of paraffin-embedded rat lung using IL-1B antibody. High-pressure and temperature Sodium Citrate pH 6.0 was used for antigen retrieval.

Product Name: IL-1 beta Rabbit Polyclonal Antibody
Catalog #: APRab03408



Immunofluorescence analysis of IL-1 beta in THP-1 cells using IL-1B antibody, and DAPI (blue).



Immunofluorescence analysis of IL-1 beta in mouse lung using IL-1B antibody, and DAPI (blue).

Note

For research use only.