

## Summary

<b>Production Name</b>	TREM2 Rabbit Polyclonal Antibody
<b>Description</b>	Primary antibody
<b>Host</b>	Rabbit
<b>Application</b>	WB,IHC-P,ICC/IF
<b>Reactivity</b>	Human,Mouse,Rat

## Performance

<b>Conjugation</b>	Unconjugated
<b>Modification</b>	Unmodified
<b>Isotype</b>	IgG
<b>Clonality</b>	Polyclonal Antibody
<b>Form</b>	Liquid
<b>Storage</b>	Store at 4°C short term. Aliquot and store at -20°C long term. Avoid freeze/thaw cycles.
<b>Buffer</b>	Liquid in PBS containing 50% glycerol, 0.5% BSA and 0.02% sodium azide, pH 7.3.
<b>Purification</b>	Affinity Purified

## Immunogen

<b>Gene Name</b>	TREM2
<b>Alternative Names</b>	TREM2; TREM-2; Trem2a; Trem2b; Trem2c; triggering receptor expressed on myeloid cells 2
<b>Gene ID</b>	54209
<b>SwissProt ID</b>	Q9NZC2

## Application

<b>Dilution Ratio</b>	WB: 1/500-1/1000 IHC: 1/50-1/100 IF: 1/50-1/200
<b>Molecular Weight</b>	Calculated MW: 25 kDa; Observed MW: 25, 35-50 kDa

## Background

**Product Name: TREM2 Rabbit Polyclonal Antibody**  
**Catalog #: APRab03407**

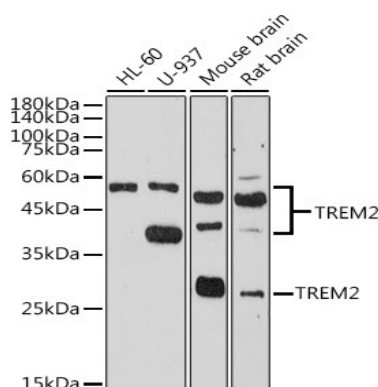


This gene encodes a membrane protein that forms a receptor signaling complex with the TYRO protein tyrosine kinase binding protein. The encoded protein functions in immune response and may be involved in chronic inflammation by triggering the production of constitutive inflammatory cytokines. Defects in this gene are a cause of polycystic lipomembranous osteodysplasia with sclerosing leukoencephalopathy (PLOS). Alternative splicing results in multiple transcript variants encoding different isoforms.

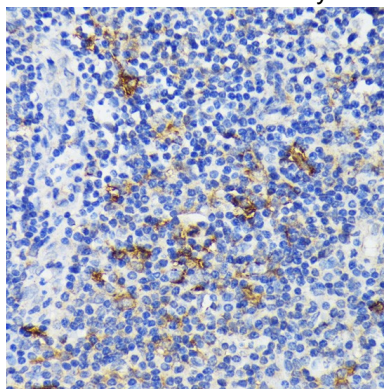
## Research Area

Immunology

## Image Data

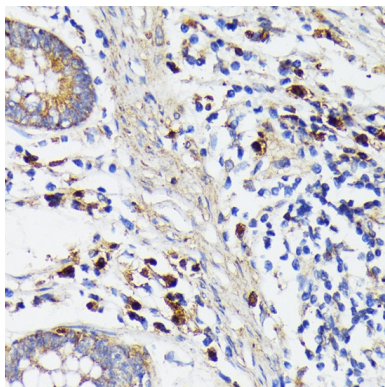


Western blot analysis of TREM2 in various cell lines lysates using TREM2 antibody.

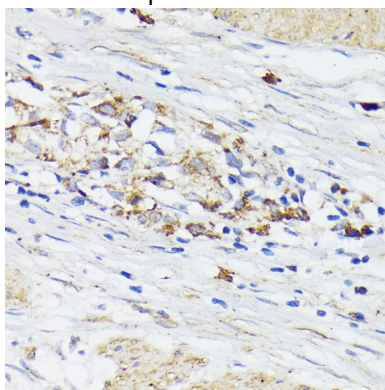


Immunohistochemistry analysis of paraffin-embedded Human tonsil using TREM2 antibody. High-pressure and temperature Sodium Citrate pH 6.0 was used for antigen retrieval.

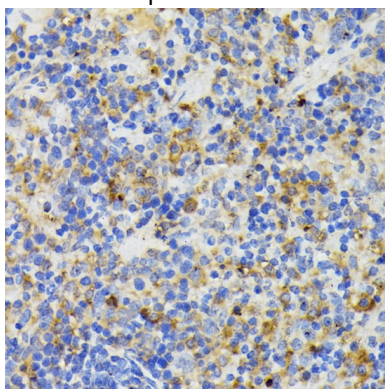
**Product Name: TREM2 Rabbit Polyclonal Antibody**  
**Catalog #: APRab03407**



Immunohistochemistry analysis of paraffin-embedded Human colon carcinoma using TREM2 antibody. High-pressure and temperature Sodium Citrate pH 6.0 was used for antigen retrieval.



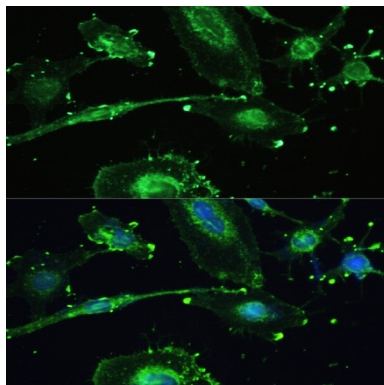
Immunohistochemistry analysis of paraffin-embedded Human gastric cancer using TREM2 antibody. High-pressure and temperature Sodium Citrate pH 6.0 was used for antigen retrieval.



Immunohistochemistry analysis of paraffin-embedded mouse spleen using TREM2 antibody. High-pressure and temperature Sodium Citrate pH 6.0 was used for antigen retrieval.

**Product Name: TREM2 Rabbit Polyclonal Antibody**  
**Catalog #: APRab03407**

---



Immunofluorescence analysis of TREM2 in U251MG using TREM2 antibody, and DAPI (blue).

### **Note**

For research use only.