

Product Name: Granzyme B Rabbit Polyclonal Antibody
Catalog #: APRab03362



Summary

Production Name	Granzyme B Rabbit Polyclonal Antibody
Description	Primary antibody
Host	Rabbit
Application	WB,IHC-P,ELISA
Reactivity	Human,Mouse,Rat

Performance

Conjugation	Unconjugated
Modification	Unmodified
Isotype	IgG
Clonality	Polyclonal Antibody
Form	Liquid
Storage	Store at 4°C short term. Aliquot and store at -20°C long term. Avoid freeze/thaw cycles.
Buffer	Liquid in PBS containing 50% glycerol, 0.5% BSA and 0.02% sodium azide, pH 7.3.
Purification	Affinity Purified

Immunogen

Gene Name	GZMB
Alternative Names	Granzyme B; Cathepsin G-like 1; CTSL1; Lymphocyte protease; Fragmentin-2; Granzyme-2; Human lymphocyte protein; SECT; GZMB; CGL1; CSPB; CTLA1; GRB
Gene ID	3002
SwissProt ID	P10144

Application

Dilution Ratio	WB: 1/500-1/1000 IHC: 1/50-1/100 ELISA: 1/10000
Molecular Weight	Calculated MW: 28 kDa; Observed MW: 40 kDa

Background

Product Name: Granzyme B Rabbit Polyclonal Antibody
Catalog #: APRab03362

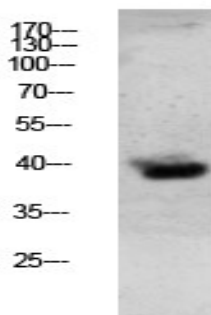


This enzyme is necessary for target cell lysis in cell-mediated immune responses. It cleaves after Asp. Seems to be linked to an activation cascade of caspases (aspartate-specific cysteine proteases) responsible for apoptosis execution. Cleaves caspase-3, -7, -9 and 10 to give rise to active enzymes mediating apoptosis.

Research Area

Cell Biology

Image Data



Western blot analysis of Granzyme B in mouse lung lysates using Granzyme B antibody.

Note

For research use only.