

Product Name: CDT1 Rabbit Polyclonal Antibody
Catalog #: APRab01393



Summary

Production Name	CDT1 Rabbit Polyclonal Antibody
Description	Primary antibody
Host	Rabbit
Application	WB, ICC/IF, FC, IP
Reactivity	Human

Performance

Conjugation	Unconjugated
Modification	Unmodified
Isotype	IgG
Clonality	Polyclonal Antibody
Form	Liquid
Storage	Store at 4°C short term. Aliquot and store at -20°C long term. Avoid freeze/thaw cycles.
Buffer	50mM Tris-Glycine(pH 7.4), 0.15M NaCl, 40% Glycerol, 0.01% Sodium azide and 0.05% BSA
Purification	Affinity Purified

Immunogen

Gene Name	CDT1
Alternative Names	CDT 1; Chromatin licensing and DNA replication factor 1; Retroviral integration site 2; RIS2
Gene ID	81620
SwissProt ID	Q9H211

Application

Dilution Ratio	WB: 1/500-1/1000 IF: 1/50-1/200 IP: 1/20 FC: 1/50-1/100
Molecular Weight	Calculated MW: 60 kDa; Observed MW: 65 kDa

Product Name: CDT1 Rabbit Polyclonal Antibody
Catalog #: APRab01393



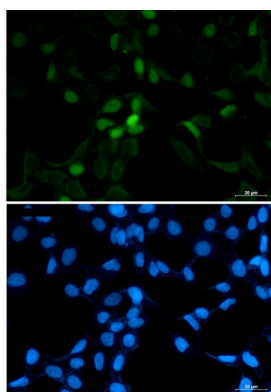
Background

Cooperates with CDC6 to promote the loading of the mini-chromosome maintenance complex onto chromatin to form the pre-replication complex necessary to initiate DNA replication. Binds DNA in a sequence-, strand-, and conformation-independent manner. Potential oncogene.

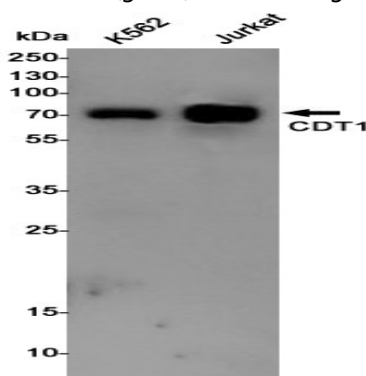
Research Area

Epigenetics and Nuclear Signaling

Image Data



Immunocytochemistry analysis of CDT1 (green) in 293T using CDT1 antibody, and DAPI (blue).



Western blot analysis of CDT1 in K562, Jurkat lysates using CDT1 antibody.

Note

For research use only.