

**Product Name: NSE Rabbit Polyclonal Antibody**  
**Catalog #: APRab01379**



## Summary

<b>Production Name</b>	NSE Rabbit Polyclonal Antibody
<b>Description</b>	Primary antibody
<b>Host</b>	Rabbit
<b>Application</b>	WB,IHC-F,IHC-P,ICC/IF,FC
<b>Reactivity</b>	Human,Mouse,Rat

## Performance

<b>Conjugation</b>	Unconjugated
<b>Modification</b>	Unmodified
<b>Isotype</b>	IgG
<b>Clonality</b>	Polyclonal Antibody
<b>Form</b>	Liquid
<b>Storage</b>	Store at 4°C short term. Aliquot and store at -20°C long term. Avoid freeze/thaw cycles.
<b>Buffer</b>	50mM Tris-Glycine(pH 7.4), 0.15M NaCl, 40% Glycerol, 0.01% Sodium azide and 0.05% BSA
<b>Purification</b>	Affinity Purified

## Immunogen

<b>Gene Name</b>	ENO2
<b>Alternative Names</b>	ENO2; Gamma-enolase; 2-phospho-D-glycerate hydro-lyase; Enolase 2; Neural enolase; Neuron-specific enolase; NSE
<b>Gene ID</b>	2026
<b>SwissProt ID</b>	P09104

## Application

<b>Dilution Ratio</b>	WB: 1/500-1/1000 IHC: 1/50-1/100 IF: 1/50-1/200 FC: 1/50-1/100
<b>Molecular Weight</b>	Calculated MW: 47 kDa; Observed MW: 47 kDa

**Product Name: NSE Rabbit Polyclonal Antibody**  
**Catalog #: APRab01379**



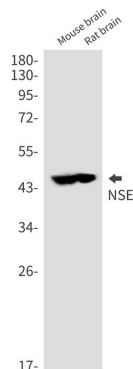
## Background

ENO2 an enzyme with 2-phospho-D-glycerate hydro-lyase activity. One of the three enolase isoenzymes found in mammals. This isoenzyme, a homodimer, is found in mature neurons and cells of neuronal origin. A switch from alpha enolase to gamma enolase occurs in neural tissue during development in rats and primates.

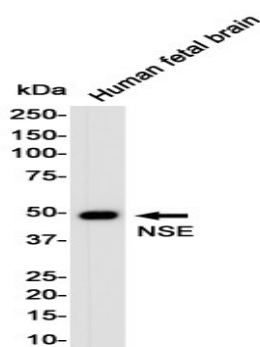
## Research Area

Signal Transduction

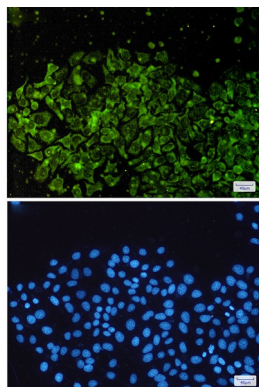
## Image Data



Western blot analysis of NSE in mouse brain, rat brain lysates using NSE antibody.



Western blot analysis of Enolase2/NSE in Human Fetal Brain lysates using Enolase2/NSE antibody.

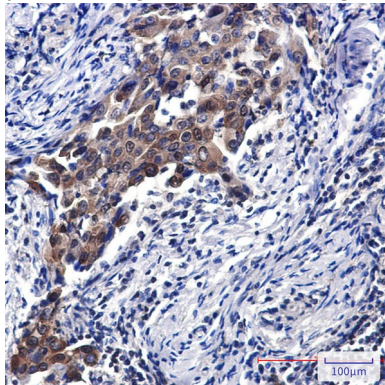


**Product Name: NSE Rabbit Polyclonal Antibody**  
**Catalog #: APRab01379**

---



Immunocytochemistry analysis of NSE(green) in Hela using NSE antibody, and DAPI(blue)



Immunohistochemistry analysis of paraffin-embedded Human lung cancer using NSE antibody. High-pressure and temperature Sodium Citrate pH 6.0 was used for antigen retrieval.

## **Note**

For research use only.