

Summary

Production Name	SENP1 Rabbit Polyclonal Antibody
Description	Primary antibody
Host	Rabbit
Application	WB,IHC-F,IHC-P,ICC/IF,FC
Reactivity	Human

Performance

Conjugation	Unconjugated
Modification	Unmodified
Isotype	IgG
Clonality	Polyclonal Antibody
Form	Liquid
Storage	Store at 4°C short term. Aliquot and store at -20°C long term. Avoid freeze/thaw cycles.
Buffer	50mM Tris-Glycine(pH 7.4), 0.15M NaCl, 40% Glycerol, 0.01% Sodium azide and 0.05% BSA
Purification	Affinity Purified

Immunogen

Gene Name	SENP1
Alternative Names	SENP1; SuPr2
Gene ID	29843
SwissProt ID	Q9P0U3

Application

Dilution Ratio	WB: 1/500-1/1000 IHC: 1/50-1/100 IF: 1/50-1/200 FC: 1/50-1/100
Molecular Weight	Calculated MW: 73 kDa; Observed MW: 76 kDa

Background

Product Name: SENP1 Rabbit Polyclonal Antibody
Catalog #: AP Rab01373

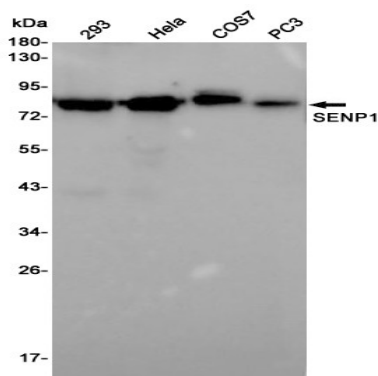


Protease that catalyzes two essential functions in the SUMO pathway: processing of full-length SUMO1, SUMO2 and SUMO3 to their mature forms and deconjugation of SUMO1, SUMO2 and SUMO3 from targeted proteins.

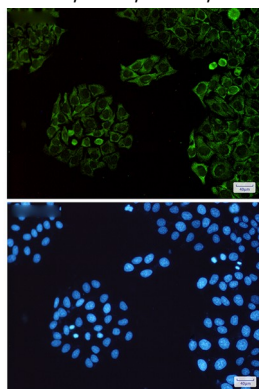
Research Area

Cell Biology

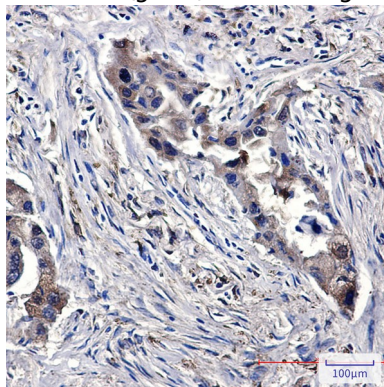
Image Data



Western blot analysis of SENP1 in 293, HeLa, COS7, PC-3 lysates using SENP1 antibody.



Immunocytochemistry analysis of SENP1(green) in HeLa using SENP1 antibody, and DAPI(blue)



Immunohistochemistry analysis of paraffin-embedded Human lung cancer using SENP1 antibody. High-pressure and temperature Sodium Citrate pH 6.0 was used for antigen retrieval.

Product Name: SENP1 Rabbit Polyclonal Antibody
Catalog #: APRab01373



Note

For research use only.