

## Summary

<b>Production Name</b>	RhoA/B/C Rabbit Polyclonal Antibody
<b>Description</b>	Primary antibody
<b>Host</b>	Rabbit
<b>Application</b>	WB,IHC-F,IHC-P,ICC/IF,FC
<b>Reactivity</b>	Human

## Performance

<b>Conjugation</b>	Unconjugated
<b>Modification</b>	Unmodified
<b>Isotype</b>	IgG
<b>Clonality</b>	Polyclonal Antibody
<b>Form</b>	Liquid
<b>Storage</b>	Store at 4°C short term. Aliquot and store at -20°C long term. Avoid freeze/thaw cycles.
<b>Buffer</b>	50mM Tris-Glycine(pH 7.4), 0.15M NaCl, 40% Glycerol, 0.01% Sodium azide and 0.05% BSA
<b>Purification</b>	Affinity Purified

## Immunogen

<b>Gene Name</b>	RHOA/RHOB/RHOC
<b>Alternative Names</b>	ARH12; ARH6; ARH9; ARHA; ARHA2; H12; RHO12; Transforming protein RhoA; RHOA; RHOB; RHOC
<b>Gene ID</b>	387/388/389
<b>SwissProt ID</b>	P61586/P62745/P08134

## Application

<b>Dilution Ratio</b>	WB: 1/500-1/1000 IHC: 1/50-1/100 IF: 1/50-1/200 FC: 1/50-1/100
<b>Molecular Weight</b>	Calculated MW: 22 kDa; Observed MW: 22 kDa

**Product Name: RhoA/B/C Rabbit Polyclonal Antibody**  
**Catalog #: APRab01372**



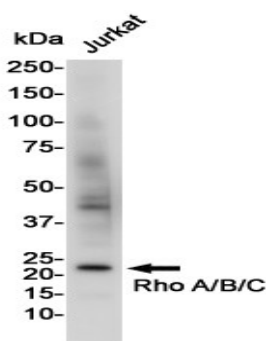
## Background

RhoA, RhoB, RhoC is a small G protein of the Rho family. Regulates a signal transduction pathway linking plasma membrane receptors to the assembly of focal adhesions and actin stress fibers. The three mammalian Rho proteins (A, B and C) are approximately 30% homologous to Ras and are expressed in a wide range of cell types. Both Ras p21 and Rho p21, as well as other members of the Ras superfamily, contain a carboxy terminal CAAX sequence (C, cysteine; A, aliphatic amino acid; X, any amino acid) which in the case of Ras has been shown to be essential for correct localization and function.

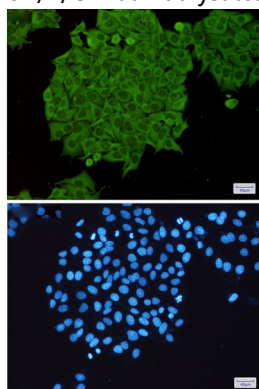
## Research Area

Signal Transduction

## Image Data



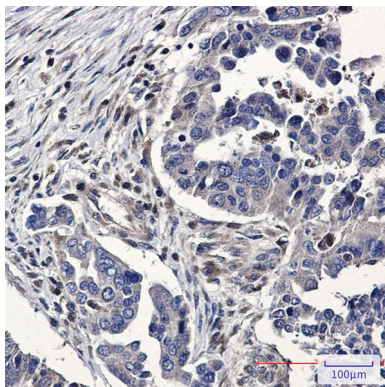
Western blot analysis of RhoA/B/C in Jurkat lysates using RhoA/B/C antibody.



Immunocytochemistry analysis of Rho A/B/C (green) in HeLa using Rho A/B/C antibody, and DAPI (blue)

**Product Name: RhoA/B/C Rabbit Polyclonal Antibody**  
**Catalog #: APRab01372**

---



Immunohistochemistry analysis of paraffin-embedded Human Cholangiocarcinoma using RhoA/B/C antibody. High-pressure and temperature Sodium Citrate pH 6.0 was used for antigen retrieval.

**Note**

For research use only.