

Product Name: Stathmin 1 Rabbit Polyclonal Antibody
Catalog #: APRab01364



Summary

Production Name	Stathmin 1 Rabbit Polyclonal Antibody
Description	Primary antibody
Host	Rabbit
Application	WB,IHC-P,FC,IP
Reactivity	Human,Rat

Performance

Conjugation	Unconjugated
Modification	Unmodified
Isotype	IgG
Clonality	Polyclonal Antibody
Form	Liquid
Storage	Store at 4°C short term. Aliquot and store at -20°C long term. Avoid freeze/thaw cycles.
Buffer	50mM Tris-Glycine(pH 7.4), 0.15M NaCl, 40% Glycerol, 0.01% Sodium azide and 0.05% BSA
Purification	Affinity Purified

Immunogen

Gene Name	STMN1 STMN1; C1orf215; LAP18; OP18; Stathmin; Leukemia-associated phosphoprotein p18;
Alternative Names	Metablastin; Oncoprotein 18; Op18; Phosphoprotein p19; pp19; Prosolin; Protein Pr22; pp17
Gene ID	3925
SwissProt ID	P16949

Application

Dilution Ratio	WB: 1/500-1/1000 IHC: 1/50-1/100 IP: 1/20 FC: 1/50-1/100
Molecular Weight	Calculated MW: 17 kDa; Observed MW: 17 kDa

Product Name: Stathmin 1 Rabbit Polyclonal Antibody
Catalog #: APRab01364



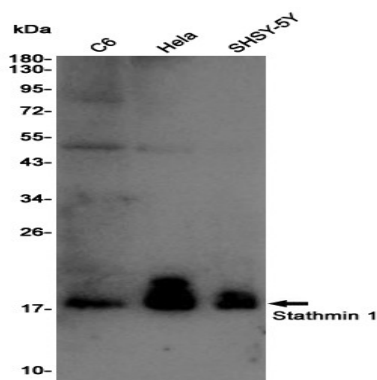
Background

Involved in the regulation of the microtubule (MT) filament system by destabilizing microtubules. Prevents assembly and promotes disassembly of microtubules. Phosphorylation at Ser-16 may be required for axon formation during neurogenesis. Involved in the control of the learned and innate fear.

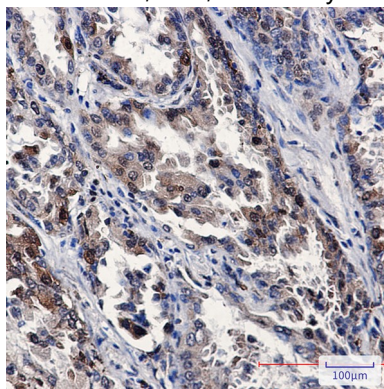
Research Area

Neuroscience

Image Data



Western blot analysis of Stathmin 1 in C6, HeLa, SH-SY5Y lysates using Stathmin 1 antibody.



Immunohistochemistry analysis of paraffin-embedded Human lung cancer using Stathmin 1 antibody. High-pressure and temperature Sodium Citrate pH 6.0 was used for antigen retrieval.

Note

For research use only.