

## Summary

<b>Production Name</b>	CD147 Rabbit Polyclonal Antibody
<b>Description</b>	Primary antibody
<b>Host</b>	Rabbit
<b>Application</b>	WB,IHC-P,FC,IP
<b>Reactivity</b>	Human,Mouse

## Performance

<b>Conjugation</b>	Unconjugated
<b>Modification</b>	Unmodified
<b>Isotype</b>	IgG
<b>Clonality</b>	Polyclonal Antibody
<b>Form</b>	Liquid
<b>Storage</b>	Store at 4°C short term. Aliquot and store at -20°C long term. Avoid freeze/thaw cycles.
<b>Buffer</b>	50mM Tris-Glycine(pH 7.4), 0.15M NaCl, 40% Glycerol, 0.01% Sodium azide and 0.05% BSA
<b>Purification</b>	Affinity Purified

## Immunogen

<b>Gene Name</b>	Bsg
<b>Alternative Names</b>	HT-7; CD147; EMMPRIN; AI115436; AI325119
<b>Gene ID</b>	12215.0
<b>SwissProt ID</b>	P18572

## Application

<b>Dilution Ratio</b>	WB: 1/500-1/1000 IHC: 1/50-1/100 IP: 1/20 FC: 1/50-1/100
<b>Molecular Weight</b>	Calculated MW: 42 kDa; Observed MW: 38-58 kDa

## Background

**Product Name: CD147 Rabbit Polyclonal Antibody**  
**Catalog #: APRab01357**

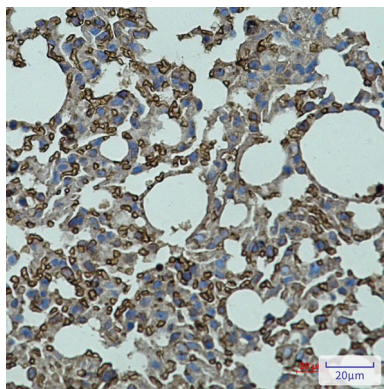


Essential for normal retinal maturation and development. Acts as a retinal cell surface receptor for NXNL1 and plays an important role in NXNL1-mediated survival of retinal cone photoreceptors. In association with glucose transporter SLC16A1/GLUT1 and NXNL1, promotes retinal cone survival by enhancing aerobic glycolysis and accelerating the entry of glucose into photoreceptors.

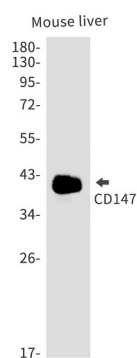
## Research Area

Immunology

## Image Data

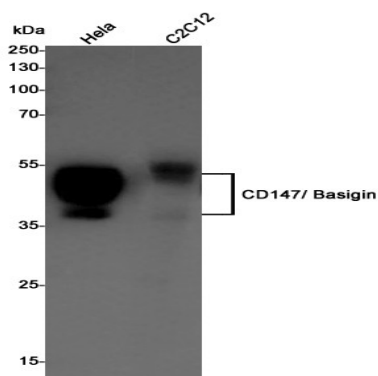


Immunohistochemistry analysis of paraffin-embedded mouse lung using CD147 antibody. High-pressure and temperature Sodium Citrate pH 6.0 was used for antigen retrieval.



Western blot analysis of CD147 in mouse liver lysates using CD147 antibody.

**Product Name: CD147 Rabbit Polyclonal Antibody**  
**Catalog #: APRab01357**



Western blot analysis of CD147/ Basigin in HeLa, C2C12 lysates using CD147/ Basigin antibody

### **Note**

For research use only.