

Summary

Production Name	IMP3 Rabbit Polyclonal Antibody
Description	Primary antibody
Host	Rabbit
Application	WB,ICC/IF,FC,IP
Reactivity	Human,Mouse,Rat

Performance

Conjugation	Unconjugated
Modification	Unmodified
Isotype	IgG
Clonality	Polyclonal Antibody
Form	Liquid
Storage	Store at 4°C short term. Aliquot and store at -20°C long term. Avoid freeze/thaw cycles.
Buffer	Rabbit IgG in phosphate buffered saline , pH 7.4, 150mM NaCl, 0.02% sodium azide and 50% glycerol.
Purification	Affinity Chromatography

Immunogen

Gene Name	IGF2BP3 Cancer/testis antigen 98; CT98; DKFZp686F1078; hKOC; IF2B3_HUMAN; IGF II mRNA binding protein 3; IGF-II mRNA-binding protein 3; IGF2 mRNA binding protein 3; IGF2 mRNA-binding protein 3; IGF2BP3; IMP 3; IMP-3; Insulin like growth factor 2 mRNA binding protein 3; Insulin-like growth factor 2 mRNA-binding protein 3; KH domain containing protein overexpressed in cancer; KH domain-containing protein overexpressed in cancer; KOC 1; KOC1; VICKZ 3; VICKZ family member 3; VICKZ3.
Alternative Names	
Gene ID	10643
SwissProt ID	O00425

Application

Product Name: IMP3 Rabbit Polyclonal Antibody
Catalog #: APRab01354



Dilution Ratio

WB: 1/500-1/1000 IF: 1/50-1/200 IP: 1/20 FC: 1/50-1/100

Molecular Weight

Calculated MW: 64 kDa; Observed MW: 69 kDa

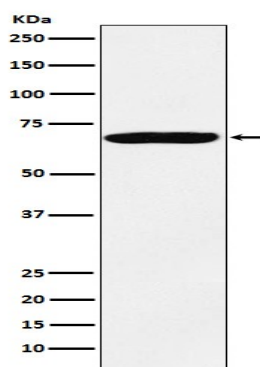
Background

RNA-binding protein that act as a regulator of mRNA translation and stability. Binds to the 5'-UTR of the insulin-like growth factor 2 (IGF2) mRNAs. Binds to sequences in the 3'-UTR of CD44 mRNA.

Research Area

Epigenetics and Nuclear Signaling

Image Data



Western blot analysis of IMP3 in HeLa lysates using IMP3 antibody.

Note

For research use only.