

Summary

Production Name	SP1 Rabbit Polyclonal Antibody
Description	Primary antibody
Host	Rabbit
Application	WB,IHC-P,ICC/IF
Reactivity	Human

Performance

Conjugation	Unconjugated
Modification	Unmodified
Isotype	IgG
Clonality	Polyclonal Antibody
Form	Liquid
Storage	Store at 4°C short term. Aliquot and store at -20°C long term. Avoid freeze/thaw cycles.
Buffer	Rabbit IgG in phosphate buffered saline , pH 7.4, 150mM NaCl, 0.02% sodium azide and 50% glycerol.
Purification	Affinity Chromatography

Immunogen

Gene Name	SP1
Alternative Names	SP1; TSFP1; Transcription factor Sp1
Gene ID	6667
SwissProt ID	P08047

Application

Dilution Ratio	WB: 1/500-1/1000 IHC: 1/50-1/100 IF: 1/50-1/200
Molecular Weight	Calculated MW: 81 kDa; Observed MW: 90 kDa

Background

Product Name: SP1 Rabbit Polyclonal Antibody
Catalog #: APRab01339

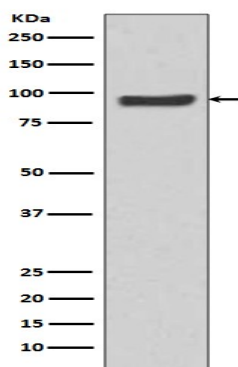


SP1 is a transcription factor of the Sp1 C2H2-type zinc-finger protein family. Phosphorylated and activated by MAPK. Dephosphorylation by PTEN inhibits DNA binding. Binds to p38 in the nucleus.

Research Area

Epigenetics and Nuclear Signaling

Image Data



Western blot analysis of SP1 in HeLa lysates using SP1 antibody.

Note

For research use only.