

Product Name: VCAM1 Rabbit Polyclonal Antibody
Catalog #: APRab01330



Summary

Production Name	VCAM1 Rabbit Polyclonal Antibody
Description	Primary antibody
Host	Rabbit
Application	WB,IHC-P,ICC/IF,FC,IP
Reactivity	Human,Mouse,Rat

Performance

Conjugation	Unconjugated
Modification	Unmodified
Isotype	IgG
Clonality	Polyclonal Antibody
Form	Liquid
Storage	Store at 4°C short term. Aliquot and store at -20°C long term. Avoid freeze/thaw cycles.
Buffer	Rabbit IgG in phosphate buffered saline , pH 7.4, 150mM NaCl, 0.02% sodium azide and 50% glycerol.
Purification	Affinity Chromatography

Immunogen

Gene Name	VCAM1
Alternative Names	VCAM1; L1CAM; Vascular cell adhesion protein 1; V-CAM 1; VCAM-1; INCAM-100; CD antigen CD106
Gene ID	7412
SwissProt ID	P19320

Application

Dilution Ratio	WB: 1/500-1/1000 IHC: 1/50-1/100 IF: 1/50-1/200 IP: 1/20 FC: 1/50-1/100
Molecular Weight	Calculated MW: 81 kDa; Observed MW: 100 kDa

Product Name: VCAM1 Rabbit Polyclonal Antibody
Catalog #: APRab01330



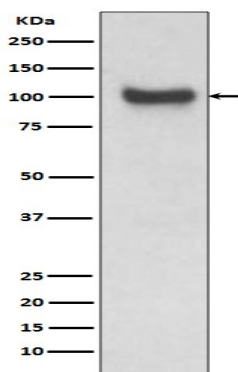
Background

This gene is a member of the Ig superfamily and encodes a cell surface sialoglycoprotein expressed by cytokine-activated endothelium. This type I membrane protein mediates leukocyte-endothelial cell adhesion and signal transduction, and may play a role in the development of atherosclerosis and rheumatoid arthritis. Two alternatively spliced transcripts encoding different isoforms have been described for this gene. Tissue specificity:

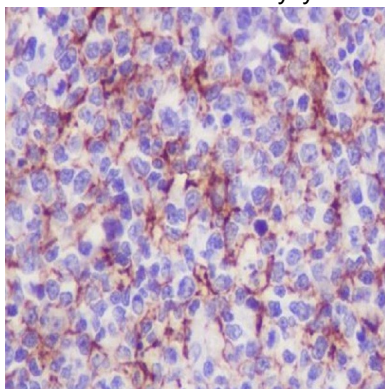
Research Area

Signal Transduction

Image Data

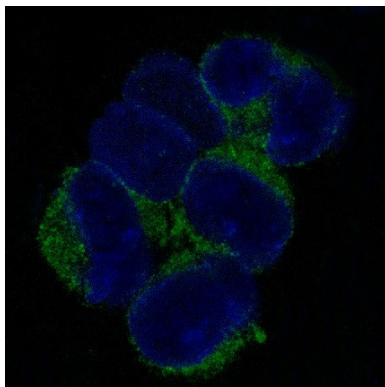


Western blot analysis of VCAM1 in mouse kidney lysates using VCAM1 antibody.



Immunohistochemistry analysis of paraffin-embedded Human tonsil using VCAM1 antibody. High-pressure and temperature Sodium Citrate pH 6.0 was used for antigen retrieval.

Product Name: VCAM1 Rabbit Polyclonal Antibody
Catalog #: APRab01330



Immunofluorescence analysis of VCAM1 in K562 using VCAM1 antibody.

Note

For research use only.