

Summary

Production Name	ALDH1A1 Rabbit Polyclonal Antibody
Description	Primary antibody
Host	Rabbit
Application	WB,IHC-P,ICC/IF,FC,IP
Reactivity	Human,Mouse,Rat

Performance

Conjugation	Unconjugated
Modification	Unmodified
Isotype	IgG
Clonality	Polyclonal Antibody
Form	Liquid
Storage	Store at 4°C short term. Aliquot and store at -20°C long term. Avoid freeze/thaw cycles.
Buffer	Rabbit IgG in phosphate buffered saline , pH 7.4, 150mM NaCl, 0.02% sodium azide and 50% glycerol.
Purification	Affinity Chromatography

Immunogen

Gene Name	ALDH1A1 ALDH1A1; ALDC; ALDH1; PUMB1; Retinal dehydrogenase 1; RALDH 1; RaLDH1; ALDH-
Alternative Names	E1; ALHDII; Aldehyde dehydrogenase family 1 member A1; Aldehyde dehydrogenase; cytosolic
Gene ID	216
SwissProt ID	P00352

Application

Dilution Ratio	WB: 1/500-1/1000 IHC: 1/50-1/100 IF: 1/50-1/200 IP: 1/20 FC: 1/50-1/100
-----------------------	---

Product Name: ALDH1A1 Rabbit Polyclonal Antibody
Catalog #: APRab01320



Molecular Weight

Calculated MW: 55 kDa; Observed MW: 55 kDa

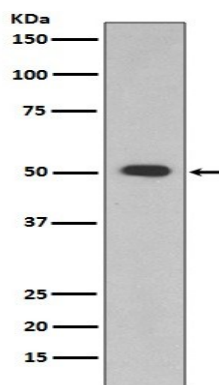
Background

ALDH1A1 is a liver cytosolic isoform of acetaldehyde dehydrogenase and is involved in the major pathway of alcohol metabolism along with alcohol dehydrogenase. ALDH1A1 is also known as retinal dehydrogenase 1 and is involved in retinol metabolism, converting retinol to retinoic acid.

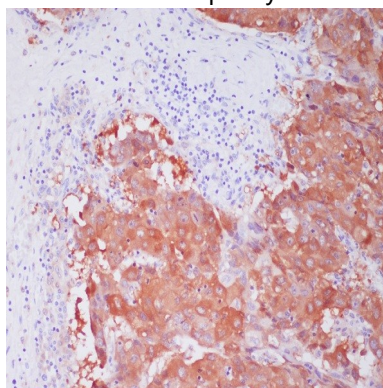
Research Area

Neuroscience

Image Data



Western blot analysis of ALDH1A1 in HepG2 lysates using ALDH1A1 antibody.



Immunohistochemistry analysis of paraffin-embedded Human liver cancer using ALDH1A1 antibody. High-pressure and temperature Sodium Citrate pH 6.0 was used for antigen retrieval.

Note

For research use only.