

Summary

Production Name	SUMO1 Rabbit Polyclonal Antibody
Description	Primary antibody
Host	Rabbit
Application	WB,IHC-P,ICC/IF,FC,IP
Reactivity	Human,Mouse,Rat

Performance

Conjugation	Unconjugated
Modification	Unmodified
Isotype	IgG
Clonality	Polyclonal Antibody
Form	Liquid
Storage	Store at 4°C short term. Aliquot and store at -20°C long term. Avoid freeze/thaw cycles.
Buffer	Rabbit IgG in phosphate buffered saline , pH 7.4, 150mM NaCl, 0.02% sodium azide and 50% glycerol.
Purification	Affinity Chromatography

Immunogen

Gene Name	SUMO1
Alternative Names	SUMO1; SMT3C; SMT3H3; UBL1; OK/SW-cl.43; Small ubiquitin-related modifier 1; SUMO-1; GAP-modifying protein 1; GMP1; SMT3 homolog 3; Sentrin; Ubiquitin-homology domain protein PIC1; Ubiquitin-like protein SMT3C; Smt3C; Ubiquitin-like protein
Gene ID	7341
SwissProt ID	P63165

Application

Dilution Ratio	WB: 1/500-1/1000 IHC: 1/50-1/100 IF: 1/50-1/200 IP: 1/20 FC: 1/50-
-----------------------	--

Product Name: SUMO1 Rabbit Polyclonal Antibody
Catalog #: APRab01315



1/100

Molecular Weight

Calculated MW: 12 kDa; Observed MW: 12 kDa

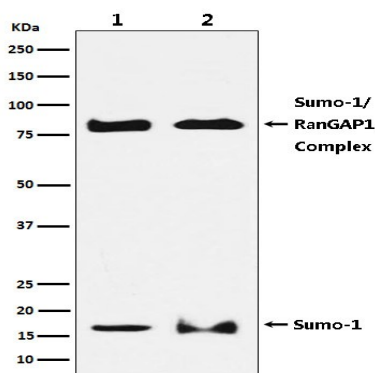
Background

SUMO1 Ubiquitin-like protein which can be covalently attached to target lysines as a monomer. Does not seem to be involved in protein degradation and may function as an antagonist of ubiquitin in the degradation process. Plays a role in a number of cellular processes such as nuclear transport, DNA replication and repair, mitosis and signal transduction.

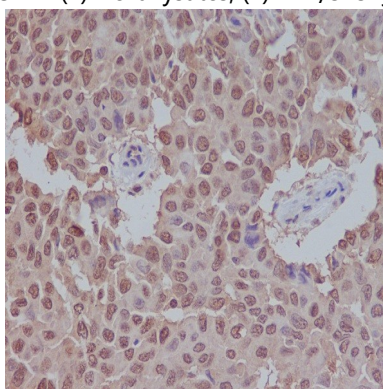
Research Area

Cell Biology

Image Data



Western blot analysis of SUMO1 in (1) HeLa lysates; (2) NIH/3T3 lysates using SUMO1 antibody.



Immunohistochemistry analysis of paraffin-embedded Human breast carcinoma using Sumo 1 antibody. High-pressure and temperature Sodium Citrate pH 6.0 was used for antigen retrieval.

Note

For research use only.

Product Name: SUMO1 Rabbit Polyclonal Antibody
Catalog #: APRab01315

