

**Product Name: Phospho-GSK3 (Tyr279/Tyr216) Rabbit Polyclonal Antibody**  
**Catalog #: APRab00953**

---



## Summary

<b>Production Name</b>	Phospho-GSK3 (Tyr279/Tyr216) Rabbit Polyclonal Antibody
<b>Description</b>	Primary antibody
<b>Host</b>	Rabbit
<b>Application</b>	WB,IHC-P,ICC/IF
<b>Reactivity</b>	Human,Mouse,Rat

## Performance

<b>Conjugation</b>	Unconjugated
<b>Modification</b>	Phosphorylated
<b>Isotype</b>	IgG
<b>Clonality</b>	Polyclonal Antibody
<b>Form</b>	Liquid
<b>Storage</b>	Store at 4°C short term. Aliquot and store at -20°C long term. Avoid freeze/thaw cycles.
<b>Buffer</b>	Liquid in PBS containing 50% glycerol, 0.5% BSA and 0.02% sodium azide, pH 7.3.
<b>Purification</b>	Affinity Purified

## Immunogen

<b>Gene Name</b>	GSK3A
<b>Alternative Names</b>	Serine/threonine-protein kinase GSK3A
<b>Gene ID</b>	2931
<b>SwissProt ID</b>	P49840

## Application

<b>Dilution Ratio</b>	WB: 1/500-1/1000 IHC: 1/50-1/100 ICC: 1/100-1/200
<b>Molecular Weight</b>	Calculated MW: 51 kDa; Observed MW: 46,51 kDa

## Background

---

**Product Name: Phospho-GSK3 (Tyr279/Tyr216) Rabbit  
Polyclonal Antibody  
Catalog #: APRab00953**

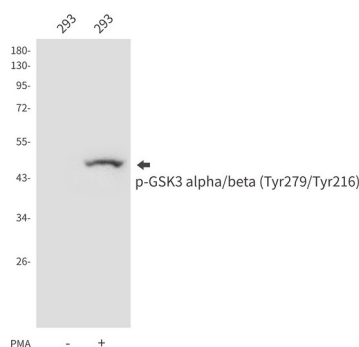


GSK3A a proline-directed protein kinase of the GSK family. Implicated in the control of several regulatory proteins including glycogen synthase, Myb, and c-Jun. GSK3 and GSK3 have similar functions. GSK3 phosphorylates tau, the principal component of neurofibrillary tangles in Alzheimer disease and is required for maximal production of amyloid plaque peptides by secretase.

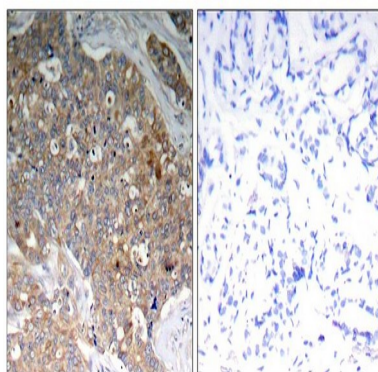
## Research Area

Neuroscience

## Image Data



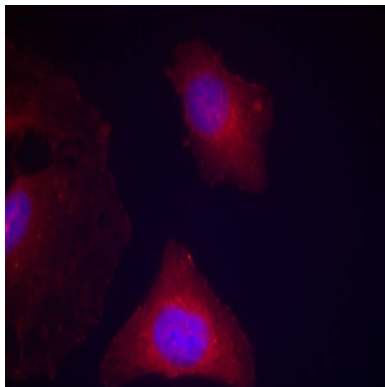
Western blot analysis of Phospho-GSK3 (Tyr279/Tyr216) in 293 lysates using Phospho-GSK3 alpha/beta (Tyr279/Tyr216) antibody.



Immunohistochemistry analysis of paraffin-embedded Human breast carcinoma tissue using Phospho-GSK3 (Tyr279/Tyr216) antibody. High-pressure and temperature Sodium Citrate pH 6.0 was used for antigen retrieval. Sample with blocking peptide on the right.

**Product Name: Phospho-GSK3 (Tyr279/Tyr216) Rabbit  
Polyclonal Antibody  
Catalog #: APRab00953**

---



Immunofluorescence analysis of Phospho-GSK3 (Tyr279/Tyr216) in HeLa cells using GSK3a/b(Phospho-Tyr279/216) antibody(red).

### **Note**

For research use only.