

**Product Name: Phospho-LIM Kinase 1 (Thr508) Rabbit
Polyclonal Antibody**
Catalog #: APRab00951



Summary

| | |
|------------------------|--|
| Production Name | Phospho-LIM Kinase 1 (Thr508) Rabbit Polyclonal Antibody |
| Description | Primary antibody |
| Host | Rabbit |
| Application | WB,IHC-P,ICC/IF |
| Reactivity | Human,Mouse,Rat |

Performance

| | |
|---------------------|--|
| Conjugation | Unconjugated |
| Modification | Phosphorylated |
| Isotype | IgG |
| Clonality | Polyclonal Antibody |
| Form | Liquid |
| Storage | Store at 4°C short term. Aliquot and store at -20°C long term. Avoid freeze/thaw cycles. |
| Buffer | Liquid in PBS containing 50% glycerol, 0.5% BSA and 0.02% sodium azide, pH 7.3. |
| Purification | Affinity Purified |

Immunogen

| | |
|--------------------------|--|
| Gene Name | LIMK1 |
| Alternative Names | LIMK1; LIMK; LIM domain kinase 1; LIMK-1 |
| Gene ID | 3984 |
| SwissProt ID | P53667 |

Application

| | |
|-------------------------|---|
| Dilution Ratio | WB: 1/500-1/1000 IHC: 1/50-1/100 ICC: 1/100-1/200 |
| Molecular Weight | Calculated MW: 73 kDa; Observed MW: 73 kDa |

Background

Product Name: Phospho-LIM Kinase 1 (Thr508) Rabbit Polyclonal Antibody
Catalog #: AP Rab00951

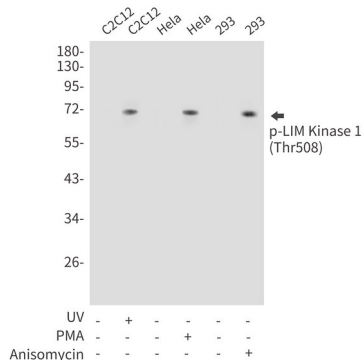


Protein kinase which regulates actin filament dynamics. Phosphorylates and inactivates the actin binding/depolymerizing factor cofilin, thereby stabilizing the actin cytoskeleton. Stimulates axonal outgrowth and may be involved in brain development. Isoform 3 has a dominant negative effect on actin cytoskeletal changes.

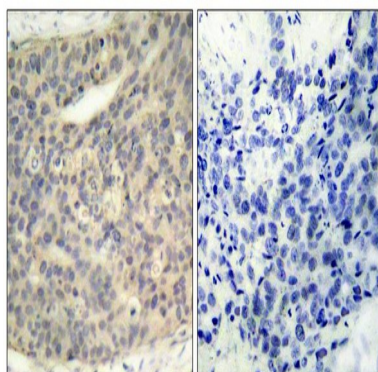
Research Area

Neuroscience

Image Data

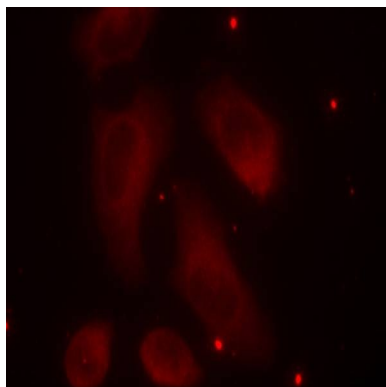


Western blot analysis of Phospho-LIM Kinase 1 (Thr508) in C2C12, Hela, 293 lysates using Phospho-LIM Kinase 1 (Thr508) antibody.



Immunohistochemistry analysis of paraffin-embedded Human breast carcinoma tissue using LIMK1(Phospho-Thr508) antibody. High-pressure and temperature Sodium Citrate pH 6.0 was used for antigen retrieval. Sample with blocking peptide on the right.

**Product Name: Phospho-LIM Kinase 1 (Thr508) Rabbit
Polyclonal Antibody
Catalog #: APRab00951**



Immunofluorescence analysis of Phospho-LIM Kinase 1 (Thr508) in Hela cells using LIMK1(Phospho-Thr508) antibody(red).

Note

For research use only.